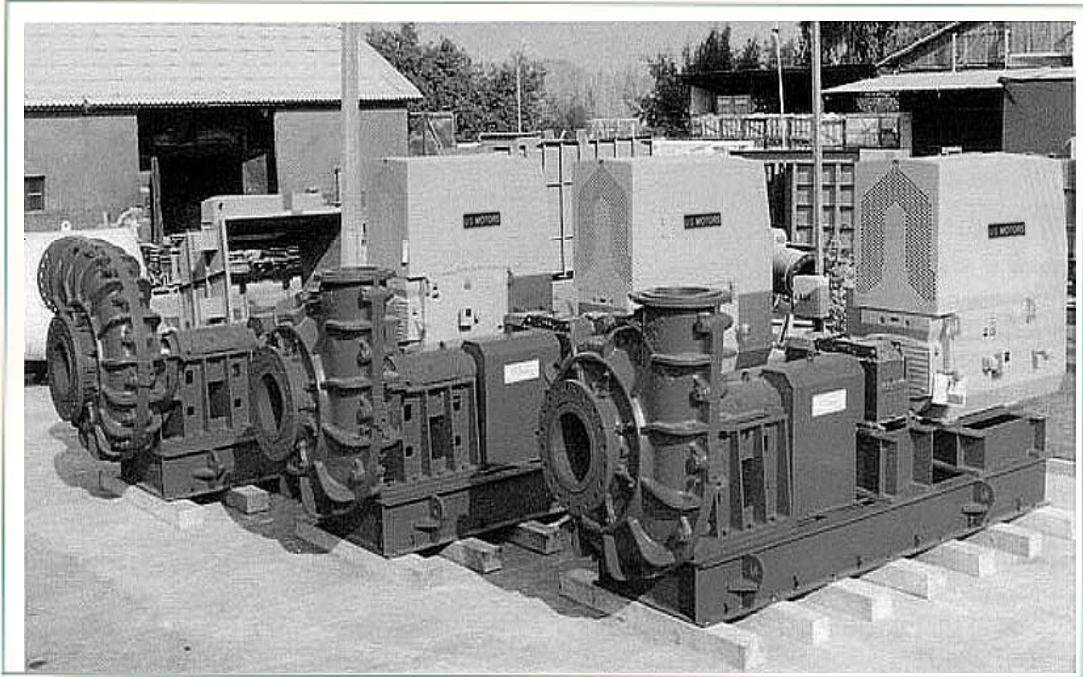
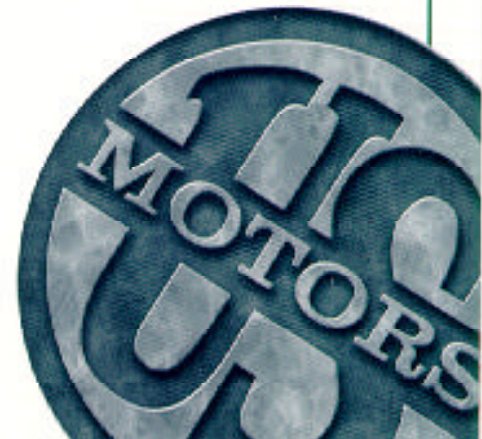


# Product Data Sheet

## Horizontal TITAN® A.C. Motors *Totally Enclosed Tube Cooled*



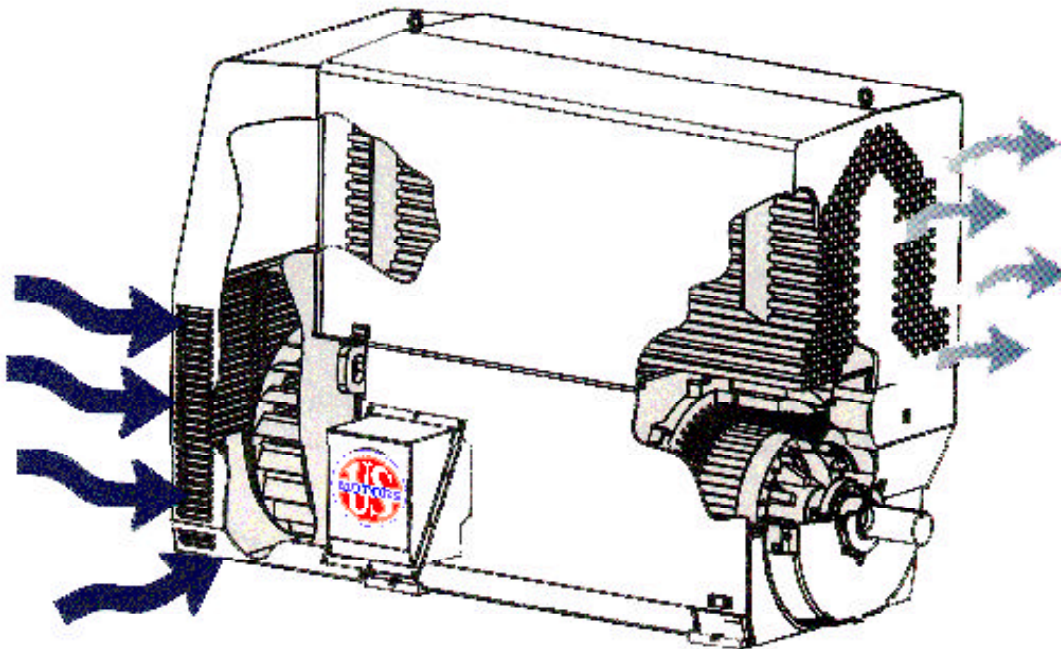
- 400 thru 2000 HP
- Three phase
- 5811 thru 8011 frames
- 1800 rpm and slower
- 50 and 60 hertz



## Product Overview

The **TOTALLY ENCLOSED TUBE COOLED TITAN®** motor type JT has a cast iron and heavy fabricated steel construction with oversized grease lubricated antifriction bearings. To ensure a high degree of corrosion resistance, steel tube construction is standard. Further, the top hat assembly is treated with a Vacuum Pressure Impregnation cycle of 100% solid epoxy coating all surfaces. The VPI system, along with other internal and external protective treatments, provides exceptional durability in hostile environments. The winding is constructed with full Class F materials and receives two cycles of 100% solid epoxy VPI.

U.S. Electrical Motors offers a wide range of totally enclosed motors designed to provide years of trouble-free service in your most demanding applications. Included in this group are fan cooled machines supplied with a top-hat mounted air-to-air heat exchanger.



In the cooling circuit, external air is forced through a strategically designed tube bundle. As cool air passes through the inside of each tube, hot air within the top-hat rises and circulates around the exposed tube surface. Convection allows the hot internal air to become cooled while the transferred heat is exhausted out the end of the top-hat. Since there is no free exchange of external and internal air, this product meets the NEMA requirements of a totally enclosed machine and is well suited for environments contaminated with airborne particles, moisture and corrosive agents.

## Accessories and Modifications

In addition to its standard features, your **TOTALLY ENCLOSED TUBE COOLED TITAN®** motor may be modified to meet more demanding specifications. Listed below are commonly added accessories available for the type JT motor.

- Inpro-Seals
- 1.15 Service Factor
- Stainless Steel Heat Exchanger Tubes
- Copper Bar Rotor Construction
- Thermal Protection Devices, Windings & Bearings
- Surge Capacitors, Lightning Arrestors
- Special Shafts, including Forged Steel
- Premium Efficiency

## Frame Assignments

RPM	1800			1200			900			720		
	460	2300	4160	460	2300	4160	460	2300	4160	460	2300	4160
400HP										5811	5811	5812
450HP										5812	5812	5812
500HP							5812	5812	5812	5812	5813	5813
600HP							5812	5812	5812	5813	5813	6810
700HP				5811	5811	5811	5813	5813	5813	8007	8007	8007
800HP	5811	5811	5811	5813	5813	5813	6809	6809	6810	8008	8008	8008
900HP	N/A	5812	5812	N/A	5813	5813	N/A	8007	8007	N/A	8009	8009
1000HP	N/A	5812	5812	N/A	5813	5813	N/A	8008	8008	N/A	8010	8010
1250HP	N/A	5813	5813	N/A	8008	8008	N/A	8008	8008	N/A	8010	8010
1500HP	N/A	5813	5813	N/A	8009	8009	N/A	8009	8009	N/A	N/A	N/A
1750HP	N/A	5813	5813	N/A	8010	8010	N/A	8010	8010	N/A	N/A	N/A
2000HP	N/A	8011	8011	N/A	8011	8011	N/A	N/A	N/A	N/A	N/A	N/A

## USEM Quality

All U.S. Electrical Motors' products are designed and built to the latest industry standards. We use the most recent advancements in engineering technology to ensure optimum performance. USEM motors are constructed in plants certified to ISO 9001/9002, using only low-loss premium materials. USEM delivers quality, high performance products for all applications.

Each U.S. Electrical Motors' manufacturing plant is equipped with a wide range of test facilities. All tests are performed to widely accepted industry standards:

- Complete initial test
- Sound test
- Polarization index (dielectric absorption ratio)
- Vibration test
- Sealed winding conformance
- Special testing to customer requirements



**Emerson Motors**  
8100 West Florissant Avenue, St. Louis, MO 63136

*WWW Home Page: <http://www.usmotors.com>*



**REGIONAL OFFICES**

DOMESTIC U.S. SALES  
INTERNATIONAL SALES  
MONTREAL, QUEBEC/CANADA  
TORONTO, ONTARIO/CANADA

**PHONE**

(888) 637-7333  
(314) 553-3185  
(800) 361-5509  
(905) 475-4670

**FAX**

(314) 553-1101  
(314) 553-2135  
(514) 332-5912  
(905) 475-4672

**REGIONAL OFFICES**

MONTERREY, MEXICO  
CARACAS, VENEZUELA  
BOGOTA, COLOMBIA

**PHONE**

(52) 8-389-1312  
(58) 02-2377522  
(57)1- 439-5420

**FAX**

(52) 8-389-1310  
(58) 02-2329727  
(57)1- 439-5417