

HEAVY 4 SERIES

Range From 8 5/8" O.D. to 30" O.D.

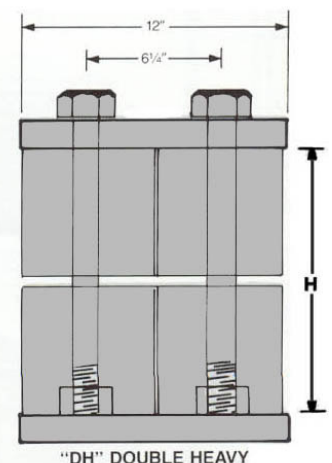
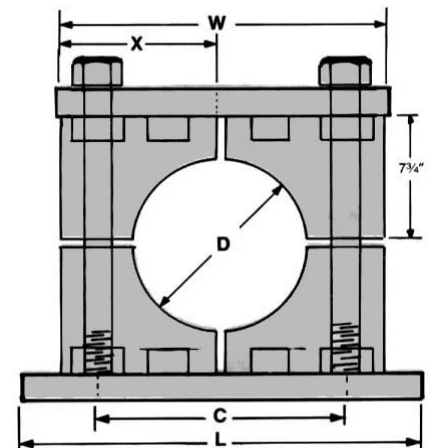
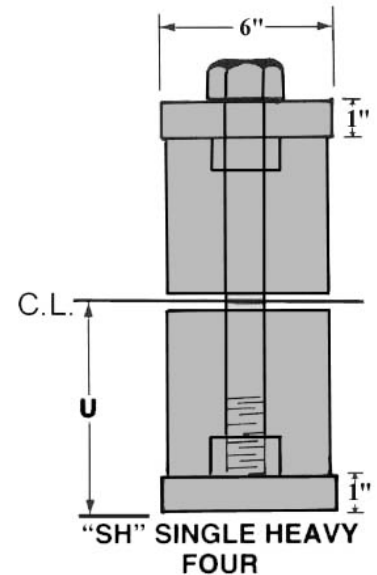
BEHRINGER HEAVY 4 PIPE SUPPORTS have no challenger when it comes to taking on the heavyweights – pipe sizes from 8 5/8" to 30" O.D. Our clamps feature a unique 4-segmented plastic design which retains dimensional accuracy, resists stress and impact, absorbs vibration and accomplishes a strong plastic to steel interface. This segmented plastic design is complemented by substantial steel support hardware.

Behringer Heavy 4 Supports can be quickly and effectively secured and are virtually maintenance-free. The patent pending 4-segment design offers greater dimensional accuracy and a stronger plastic to steel interface unobtainable in large, two-piece designs which have a tendency to shrink and distort after molding. Four precision molded plastic segments are identical and interchangeable. Four bosses welded onto each cover plate and weld plate mate with cored cylindrical recesses molded into each plastic segment achieving a composite plastic-to-steel interface. These bosses provide an easy, snap-in assembly. 1 1/4" diameter hex bolts engage threaded bushings in the weld plate. The threaded bushings are welded into the weld plate from the bottom, assuring consistent and uniform torque and preventing pull-out.

As in standard, twin, and heavy series, our clamp segments are molded of tough, industrial grade polypropylene, or Santoprene for higher temperature service (see page 1 for temperature ratings). Our plastics are stress and impact resistant, and absorb energy to help dampen vibration and control noise in compliance with OSHA environmental requirements. Behringer plastics resist stress cracking and conform to minor pipe irregularities. Order numbers including decimal O.D. are molded into each segment for easy identification. Weld plates and cover plates are manufactured from low carbon steel material. For corrosive application, **stainless steel or plated hardware is available.**

DOUBLE HEAVY 4-SEGMENT CLAMPS are also available. A double heavy clamp essentially is the product of 2 single heavy supports on one continuous weld plate and cover plate. These clamps are commonly applied in steel mills, foundries, oil refineries, offshore installations, or wherever large piping is used.

Heavy 4 Series is the newest addition to Behringer's extensive pipe and tube support system and stocked for immediate delivery.



HEAVY 4 SERIES DIMENSIONS IN INCHES

GROUP NO.	PIPE SIZE	* ORDER NO.	D	W	L	U	H	C	X	APPROX. WEIGHT IN LBS.
H11	8"	H 11862	8 5/8	18 1/4	20	9	16	15 11/16	8 7/8	100
H11	10"	H 11075	10 3/4	18 1/4	20	9	16	15 11/16	8 7/8	100
H11	12"	H 11275	12 3/4	18 1/4	20	9	16	15 11/16	8 7/8	100
H12	14"	H 12140	14	23 1/2	26	11	20	20 7/8	11 3/8	120
H12	16"	H 12180	16	23 1/2	26	11	20	20 7/8	11 3/8	120
H12	18"	H 13200	18	23 1/2	26	11	20	20 7/8	11 3/8	120
H13	20"	H 14240	20	24 3/4	27 1/2	12	22	22 1/4	11 3/8	130
H14	24"	H 15300	24	28 3/4	30	14	26	26 1/4	11 3/8	150
H15	30"	H 15300	30	34 3/4	36	17	32	32 1/4	11 3/8	180

* When ordering, add prefix "S" (single heavy style) or "D" (double heavy style). Also add suffix "-PP" for polypropylene or "-SP" for Santoprene to specify plastic segment material.

Order Example: Single Heavy 20" pipe with polypropylene segments – SH13200-PP.

Behringer Heavy 4 Clamps incorporate a U.S. and Foreign Patented System for using four separate clamping inserts to secure a diameter.

U.S. Patent # 4,444,370