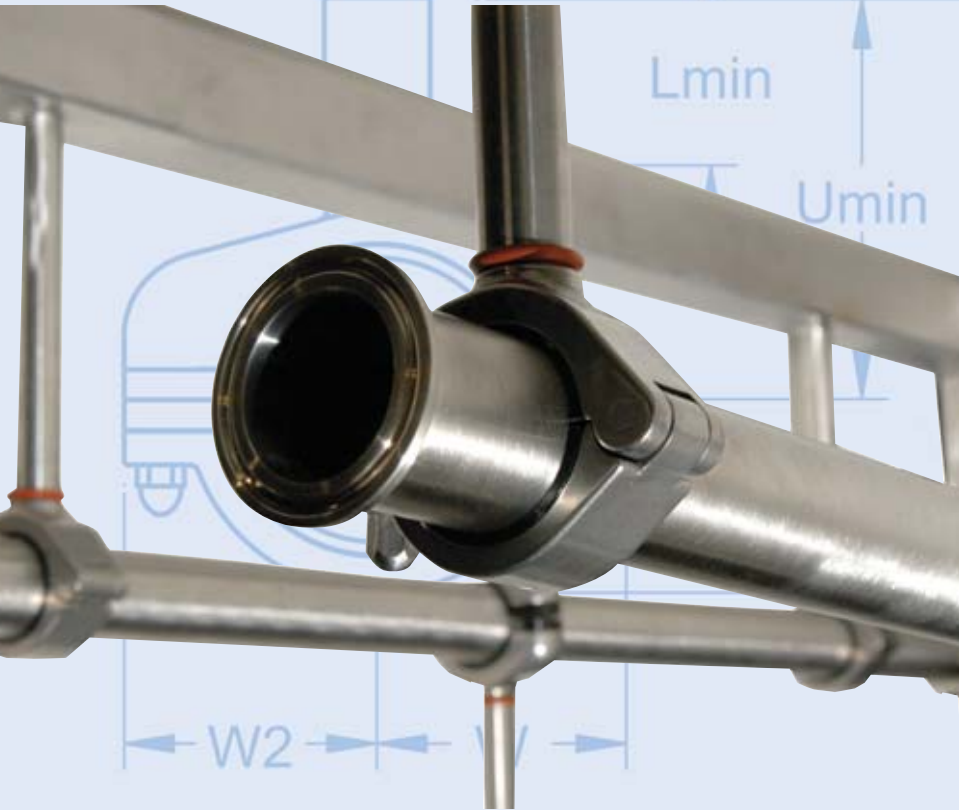
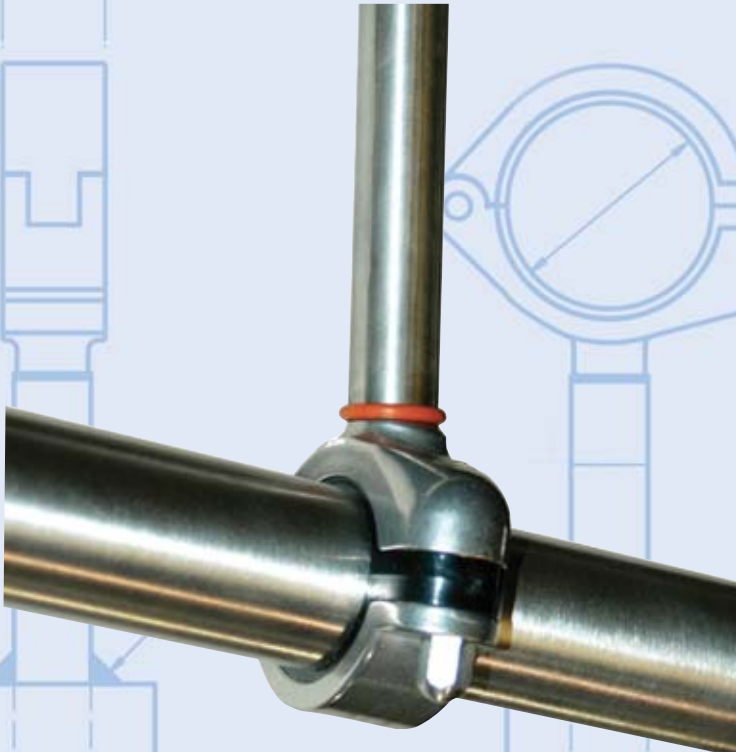


# **BEHRINGER<sup>®</sup>**



## ***RH Series Hygienic Tube Hangers***



***17 Ridge Road  
Branchville, N.J.  
07826***

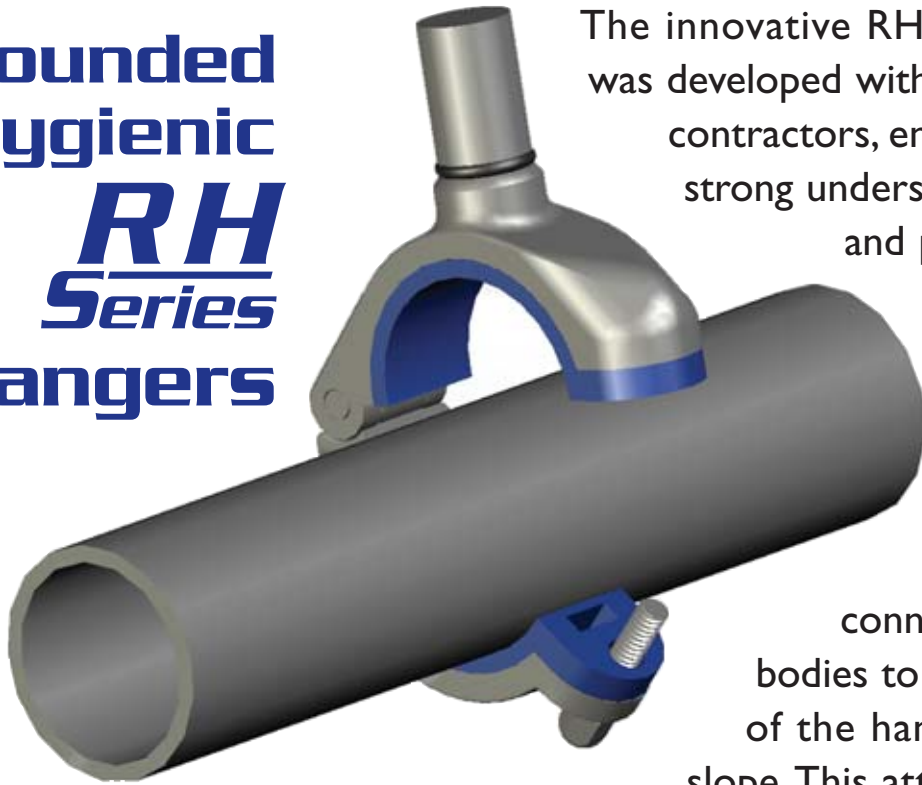
***Phone: 973-948-0226***

***Fax: 973-948-2562***

***www.behringersystems.com  
cserv@behringersystems.com***

# ***RH Series HAS ALL YOUR ANGLES COVERED...***

## **Rounded Hygienic RH Series Hangers**



The innovative RH Series hangers design was developed with the input of engineers, contractors, end users and Behringer's strong understanding of hygienic tube and pipe applications. These dynamic hangers answer industry concerns, while incorporating several contractor time-saving benefits.

The tension ring connection allows the clamp bodies to self adjust, independent of the hanging rod, to the tubes slope. This attribute reduces internal

stress on the tube, as well as, eliminating an entire step during slope adjustment. The combined use of the RH support and a telescopic stanchion permits line adjustment in the x, y and z axis's. The ability to make these adjustments, while the hanger is secured to the tubing, eliminates the step of retesting the slope after the hangers have been mounted. What could prove to be biggest saver is these are packaged and installed as a one piece unit. No loose parts and wasted time gathering pieces and assembling components on ladders and space restricted areas. These benefits ultimately create a quality job.

# **BEHRINGER®**

# Table of Contents

---

Figure 121 RH  
**Dynamic Hanger/  
Bar Mount Unit** Pages 2 - 3

---

Figure 121 RHR  
**Rigid Hanger/  
Bar Mount Unit** Pages 4 - 5

---

Figure 125 RH  
**“Telescopic” Stanchion  
Assembly** Pages 6 - 7

---

Figure 126 RH  
**“Telescopic” Stanchion  
Assembly with  
Base Plate** Pages 8 - 9

---

Figure 100 RHR  
**Rigid Hanger/  
Weld Plate Unit** Pages 10

---

Figure 121 RHT  
**Rigid Hanger/  
Thread Mount Unit** Pages 11

---

Figure 150  
**Sanitary Clamp  
Seals** Page 12

---

Figure 151  
**Sanitary Clamps** Page 13

---

Figure 107 RH  
**Thermal Expansion  
Guide** Page 14

---

Technical Data  
**Material Properties,  
Slope Conversion Charts,  
Shear Force Diagram,  
Hanger Spacing** Page 15-17

---



## Automatic Slope Adjustment

Tension Ring connection allows hanger body to adjust 7° to tube slope and rotate 360° to relieve all unnecessary stresses between tube and “RH” support



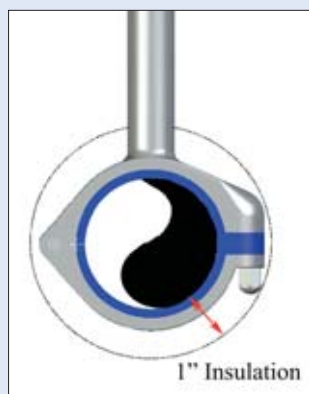
## Telescopic - Elevation Adjustment

RH Series with Stanchion allows for quick x, y and z axis adjustment for ease in locating tube's direction, elevation and slope.



## One Piece unit

Assembled as a one piece unit: no loose parts, quick identification and swift installation



## Sized for Insulation

Up to 4" tube size, Behringer “RH” Series Support will be buried within 1" insulation

**FIG. 121 RH (PATENT PENDING) DYNAMIC HANGER/BAR MOUNT UNIT**

**Size Range:** 0.50" diameter through 6.125" diameter.

**Hardware:** 316L Stainless Steel and Zinc available upon request.

**Finish:** Stainless Steel Polished at 25RA, Zinc Plated Carbon Steel is at mill finish unless specified.

**Plastic Insert:** **Polysulfone** (color black) up to 320 degrees F.

**Polyamide** (color blue) up to 248 degrees F.

Polyamide only available in Groups 1 - 6.

**Installation:** Cut 6" round bar in field to proper offset. Field weld bar to structure. Tighten acorn bolt with 3/8" socket head to 7 Foot-Pounds (9/16" socket head to 33 Foot-Pounds for Group No. 9).

**Ordering:** Specify figure number; tube, pipe or copper size; hardware material and finish; plastic insert material; also indicate if thermal expansion guide (TEG) is required. Identify bar length "L" if other than 6" standard.

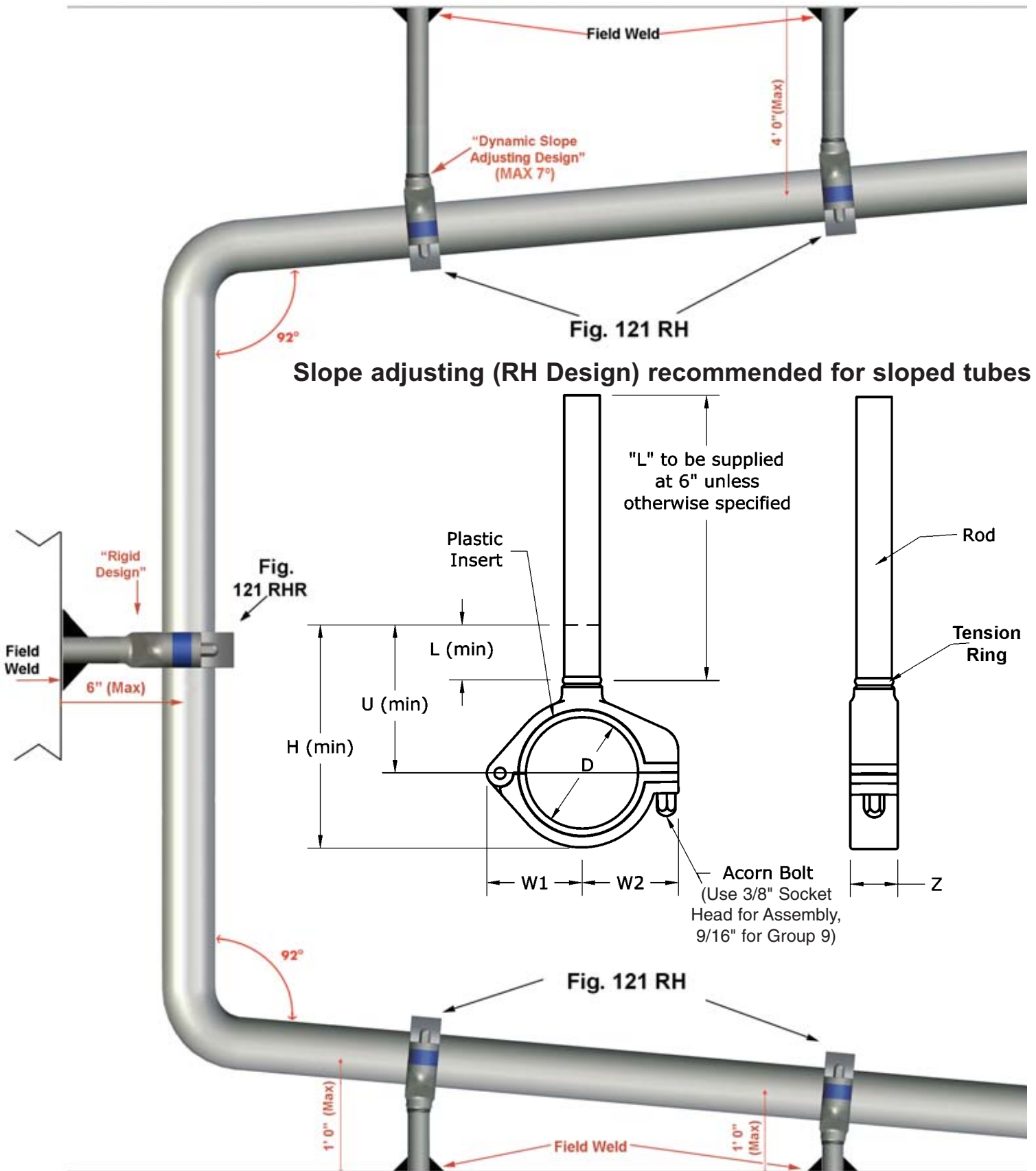
**Ordering**

- Examples:**
1. Fig. 121RH - 1/2" Tube - 316L 25RA - Polyamide L=12".
  2. Fig. 121 RH - 2" Pipe - Zinc - Polysulfone w/ TEG.



GROUP NO	HANGER SIZE	"D" DIAMETER (inches)	W1	W2	Z	L (min)	U (min)	H (min)	Bar Dia.
1	1/2" Stainless Tube	0.500	1.01	1.02	1.00	1.36	2.33	2.91	0.75
	1/4" Pipe Size	0.540							
	1/2" Copper Tube	0.625							
2	3/4" Stainless Tube	0.750	1.13	1.15	1.00	1.36	2.45	3.16	
	1/2" Pipe Size	0.840							
	3/4" Copper Tube	0.875							
3	1" Stainless Tube	1.000	1.26	1.28	1.00	1.36	2.57	3.41	
	3/4" Pipe Size	1.050							
	1" Copper Tube	1.125							
4	1" Pipe Size	1.315	1.50	1.54	1.00	1.36	2.82	3.90	
	1 1/2" Stainless Tube	1.500							
	1 1/2" Copper Tube	1.625							
5	1 1/2" Pipe Size	1.900	1.76	1.79	1.00	1.36	3.07	4.41	
	2" Stainless Tube	2.000							
	2" Copper Tube	2.125							
6	2" Pipe Size	2.375	2.02	2.03	1.00	1.36	3.32	4.91	
	2 1/2" Stainless Tube	2.500							
7	2 1/2" Pipe Size	2.875	2.27	2.28	1.00	1.36	3.57	5.41	
	3" Stainless Tube	3.000							
	3" Copper Tube	3.125							
8	3" Pipe Size	3.500	2.76	2.79	1.00	1.36	4.07	6.41	
	4" Stainless Tube	4.000							
	4" Copper Tube	4.125							
9	4" Pipe Size	4.500	3.98	4.46	1.50	1.78	5.95	9.53	
	6" Stainless Tube	6.000							
	6" Copper Tube	6.125							

**FIG. 121 RH (PATENT PENDING) DYNAMIC HANGER/BAR MOUNT UNIT**



**FIG. 121 RHR (PATENT PENDING) RIGID HANGER/BAR MOUNT UNIT**

**Size Range:** 0.50" diameter through 6.125" diameter.

**Hardware:** 316L Stainless Steel and Zinc available upon request.

**Finish:** Stainless Steel Polished at 25RA, Zinc Plated Carbon Steel is at mill finish unless specified.

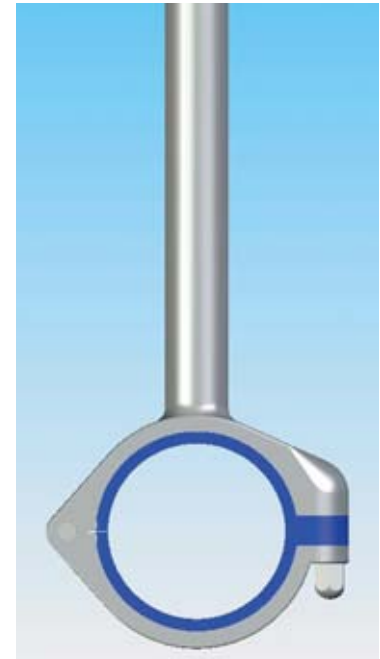
**Plastic Insert:** **Polysulfone** (color black) up to 320 degrees F.  
**Polyamide** (color blue) up to 248 degrees F.  
 Polyamide only available in Groups 1 - 6.

**Installation:** Cut 6" round bar in field to proper offset. Field weld bar to structure. Tighten acorn bolt with 3/8" socket head to 7 Foot-Pounds (9/16" socket head to 33 Foot-Pounds for Group No. 9).

**Ordering:** Specify figure number; tube, pipe or copper size; hardware material and finish; plastic insert material; also indicate if thermal expansion guide (TEG) is required. Identify bar length "L" if other than 6" standard.

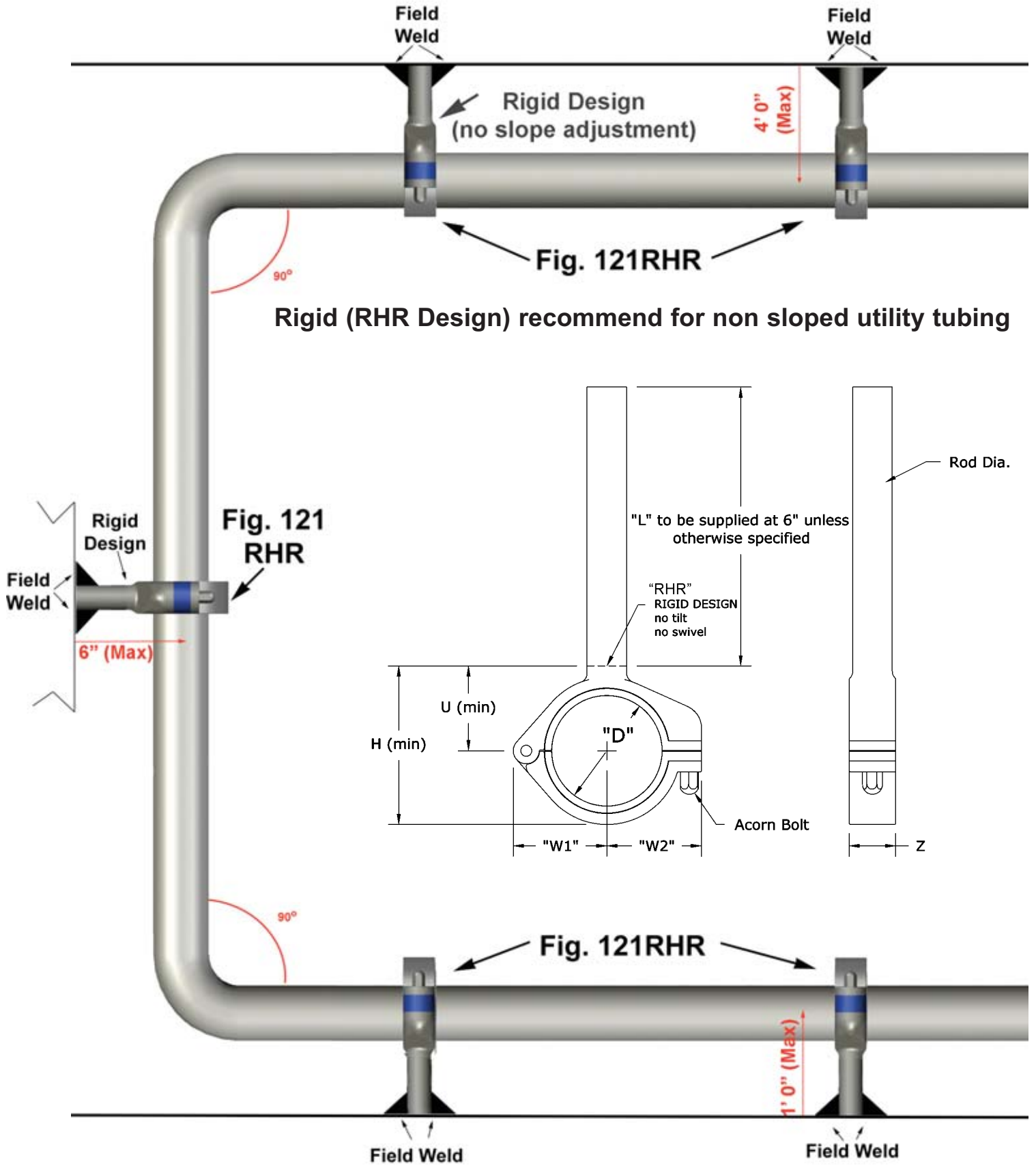
**Ordering**

- Examples:**
1. Fig. 121RHR - 1/2" Tube - 316L 25RA - Polysulfone L=12".
  2. Fig. 121 RHR - 3/4" Pipe - Zinc - Polysulfone w/ TEG.



GROUP NO	HANGER SIZE	"D" DIAMETER (inches)	W1	W2	Z	U (min)	H (min)	Bar Dia.
1	1/2" Stainless Tube	0.500	1.01	1.02	1.00	0.92	1.50	0.75
	1/4" Pipe Size	0.540						
	1/2" Copper Tube	0.625						
2	3/4" Stainless Tube	0.750	1.13	1.15	1.00	1.04	1.75	
	1/2" Pipe Size	0.840						
	3/4" Copper Tube	0.875						
3	1" Stainless Tube	1.000	1.26	1.28	1.00	1.16	2.00	
	3/4" Pipe Size	1.050						
	1" Copper Tube	1.125						
4	1" Pipe Size	1.315	1.50	1.54	1.00	1.41	2.49	
	1 1/2" Stainless Tube	1.500						
	1 1/2" Copper Tube	1.625						
5	1 1/2" Pipe Size	1.900	1.76	1.79	1.00	1.66	3.00	
	2" Stainless Tube	2.000						
	2" Copper Tube	2.125						
6	2" Pipe Size	2.375	2.02	2.03	1.00	1.91	3.50	
	2 1/2" Stainless Tube	2.500						
7	2 1/2" Pipe Size	2.875	2.27	2.28	1.00	2.16	4.00	
	3" Stainless Tube	3.000						
	3" Copper Tube	3.125						
8	3" Pipe Size	3.500	2.76	2.79	1.00	2.66	5.00	
	4" Stainless Tube	4.000						
	4" Copper Tube	4.125						
9	4" Pipe Size	4.500	3.98	4.46	1.50	4.12	7.70	1.00
	6" Stainless Tube	6.000						
	6" Copper Tube	6.125						

**FIG. 121 RHR (PATENT PENDING) RIGID HANGER/BAR MOUNT UNIT**



**FIG. 125 RH (PATENT PENDING)**

**"TELESCOPIC" ASSEMBLY**

**Size Range:** RH Hanger: 0.50" diameter through 6.125" diameter.

**Hardware:** 316L Stainless Steel and Zinc available upon request.

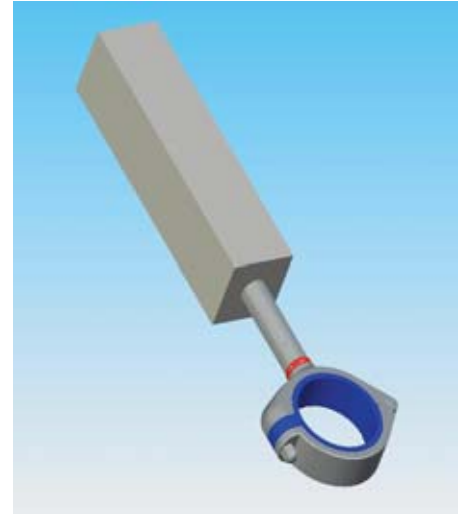
**Finish:** RH Hanger: Stainless Steel Polished at 25RA, Zinc is at mill finish unless specified.

**Stanchion:** Stainless Steel - mill finish to a 25 RA  
Zinc Plated Carbon or Painted finishes upon request.

**Plastic Insert:** Polysulfone (color black) up to 320 Degrees F.

Polyamide (color blue) up to 248 Degrees F.  
Polyamide only available in Groups 1 - 6.

**Installation:** Cut square tube open end to desired offset length and weld to support structure. Insert rod into the square tubes capped end and adjust telescopically to desired length and weld into position. Tighten acorn bolt with 3/8" socket head to 7 Foot-Pounds (9/16" socket head to 33 Foot-Pounds for Group No. 9).



**Ordering:** Specify figure number; tube, pipe or copper size; hardware material and finish; (for RH hanger and stanchion); plastic insert material; also indicate if thermal expansion guide (TEG) is required; identify bar length "L" if other than 6" standard.

**Ordering**

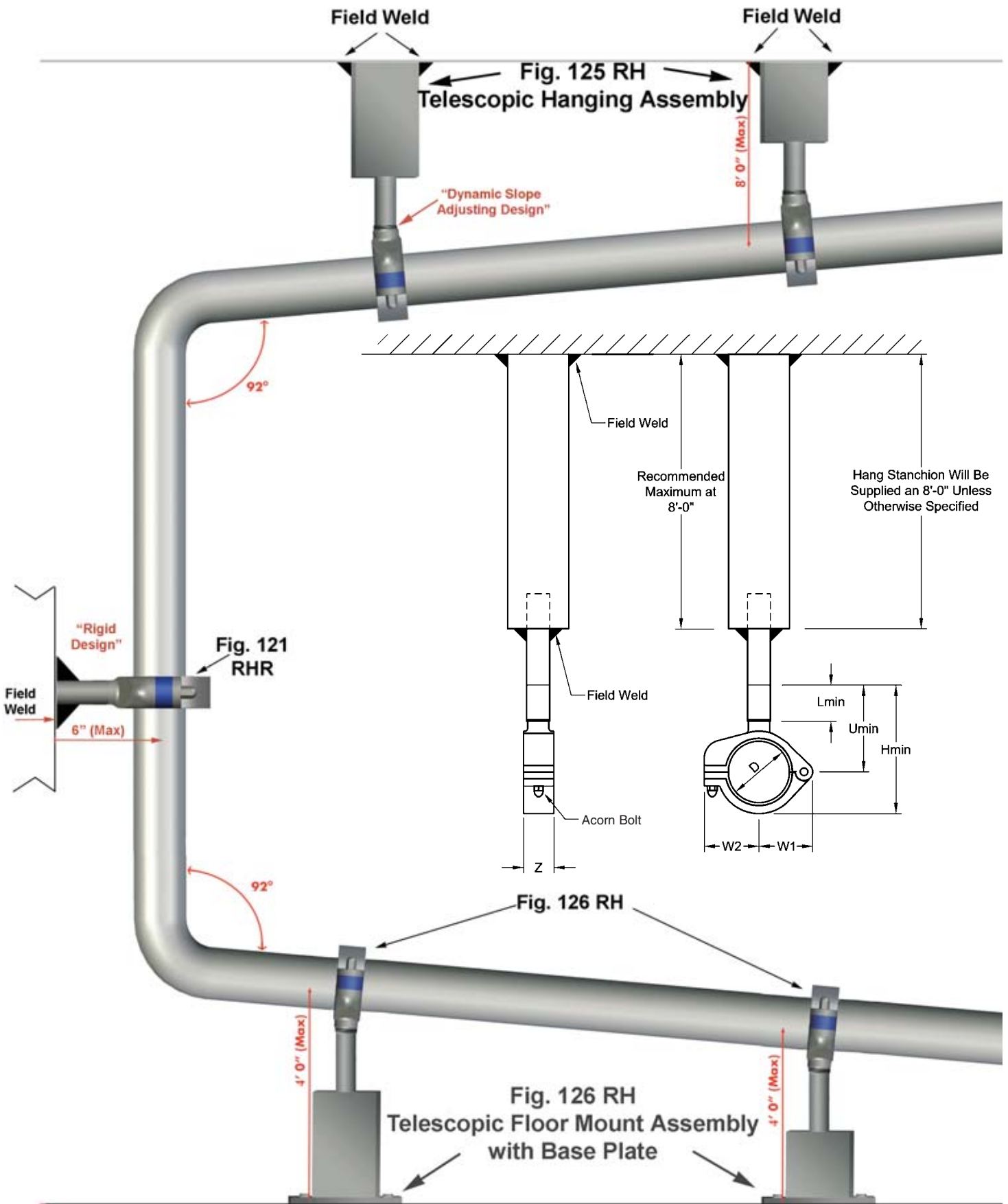
- Examples:**
1. Fig. 125RH - 1/2 Tube - 304L with RH hanger and stanchion @ 25RA - Polyamide L=12"
  2. Fig. 125RH - 3/4 Pipe - 304L with RH hanger @ 25RA and stanchion with mill finish - Polysulphone w/ guide, Hang stanchion @ 48".

GROUP NO	HANGER SIZE	"D" DIAMETER (inches)	W1	W2	Z	L (min)	U (min)	U (max)	H (min)	Bar Dia.	Sq. Tube
1	1/2" Stainless Tube	0.500	1.01	1.02	1.00	1.36	2.33	7.03	2.78	0.75	2"x2"x1/8"
	1/4" Pipe Size	0.540									
	1/2" Copper Tube	0.625									
2	3/4" Stainless Tube	0.750	1.13	1.15	1.00	1.36	2.45	7.25	3.12		
	1/2" Pipe Size	0.840									
	3/4" Copper Tube	0.875									
3	1" Stainless Tube	1.000	1.26	1.28	1.00	1.36	2.57	7.28	3.28		
	3/4" Pipe Size	1.050									
	1" Copper Tube	1.125									
4	1" Pipe Size	1.315	1.50	1.54	1.00	1.36	2.82	7.52	3.77		
	1 1/2" Stainless Tube	1.500									
	1 1/2" Copper Tube	1.625									
5	1 1/2" Pipe Size	1.900	1.76	1.79	1.00	1.36	3.07	7.78	4.28		
	2" Stainless Tube	2.000									
	2" Copper Tube	2.125									
6	2" Pipe Size	2.375	2.02	2.03	1.00	1.36	3.32	8.07	4.81		
	2 1/2" Stainless Tube	2.500									
	2 1/2" Pipe Size	2.875									
7	3" Stainless Tube	3.000	2.27	2.28	1.00	1.36	3.57	8.30	5.30		
	3" Copper Tube	3.125									
	3" Pipe Size	3.500									
8	4" Stainless Tube	4.000	2.76	2.79	1.00	1.36	4.07	8.78	6.27		
	4" Copper Tube	4.125									
	4" Pipe Size	4.500									
9	6" Stainless Tube	6.000	3.98	4.46	1.50	1.78	5.95	10.36	9.10	1.00	3"x3"x3/16"
	6" Copper Tube	6.125									



**FIG. 125 RH (PATENT PENDING)**

**“TELESCOPIC” ASSEMBLY**



**FIG. 126 RH (PATENT PENDING) "TELESCOPIC" ASSEMBLY WITH BASE PLATE**

**Size Range:** 0.50" diameter through 6.125" diameter.

**Hardware:** 316L Stainless Steel and Zinc available upon request.

**Finish: RH Hanger:** Stainless Steel Polished at 25RA, Zinc is at mill finish unless specified.

**Stanchion:** Stainless Steel - mill finish to a 25 RA  
Zinc Plated Carbon or Painted finishes upon request.

**Plastic Insert: Polysulfone** (color black) up to a 320 Degrees F.

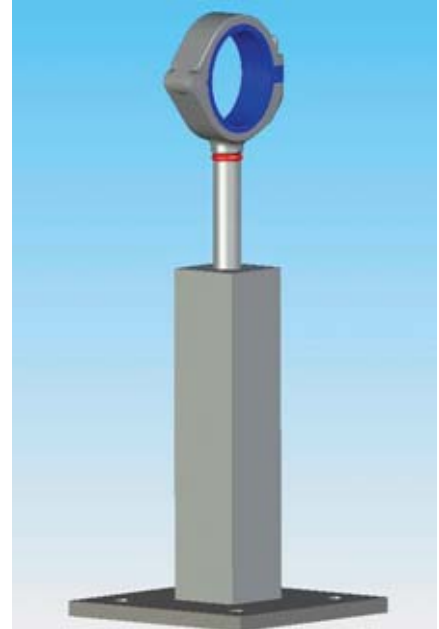
**Polyamide** (color blue) up to 248 Degrees F.  
Polyamide only available in Groups 1 - 6.

**Installation:** Cut square tubes open end to desired offset length and weld to base plate. Weld or bolt base plate to mounting surface. Insert rod into the square tubes capped end and adjust telescopically to desired length and weld. Tighten acorn bolt with 3/8" socket head to 7 Foot-Pounds (9/16" socket head to 33 Foot-Pounds for Group No. 9).

**Ordering:** Specify: figure number; tube, pipe or copper size; hardware material and finish; plastic insert material also indicate if thermal expansion guide (TEG) is required; identify bar length "L" if other than 6" standard.

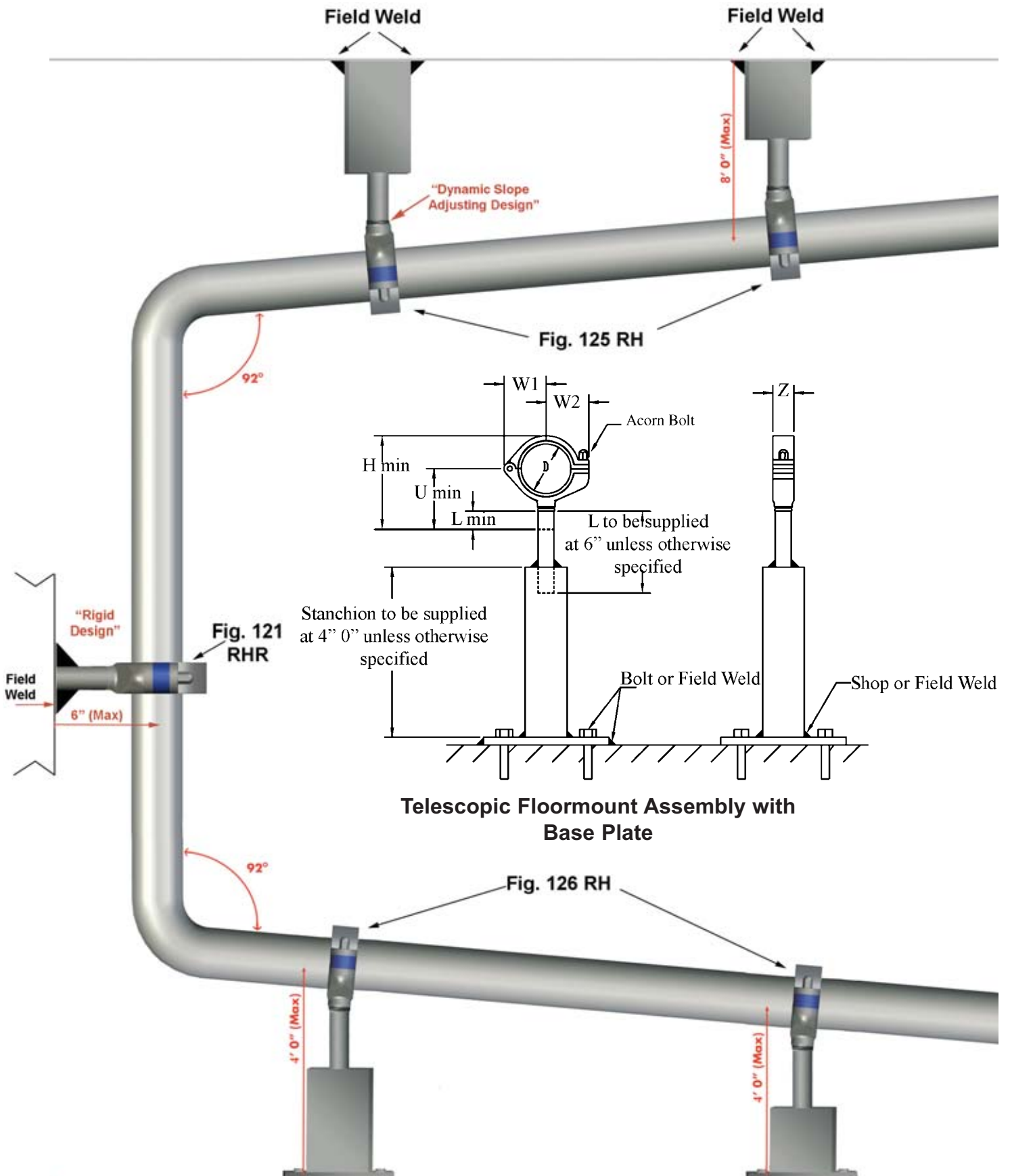
**Ordering:**

- Examples:**
1. Fig. 126RH - 1/2" Tube - 304L 25 RA - Polyamide L=12" or
  2. Fig. 126RH - 3/4" Pipe - 316L Mill - Polysulfone w/ guide.



GROUP NO	HANGER SIZE	"D" DIAMETER (inches)	W1	W2	Z	L (min)	U (min)	U (max)	H (min)	Bar Dia.	Sq. Tube	Base Plate
1	1/2" Stainless Tube	0.500	1.01	1.02	1.00	1.36	2.33	7.03	2.78	0.75	2"x2"x1/8"	6"x6"x3/8"
	1/4" Pipe Size	0.540										
	1/2" Copper Tube	0.625										
2	3/4" Stainless Tube	0.750	1.13	1.15	1.00	1.36	2.45	7.25	3.12			
	1/2" Pipe Size	0.840										
	3/4" Copper Tube	0.875										
3	1" Stainless Tube	1.000	1.26	1.28	1.00	1.36	2.57	7.28	3.28			
	3/4" Pipe Size	1.050										
	1" Copper Tube	1.125										
4	1" Pipe Size	1.315	1.50	1.54	1.00	1.36	2.82	7.52	3.77			
	1 1/2" Stainless Tube	1.500										
	1 1/2" Copper Tube	1.625										
5	1 1/2" Pipe Size	1.900	1.76	1.79	1.00	1.36	3.07	7.78	4.28			
	2" Stainless Tube	2.000										
	2" Copper Tube	2.125										
6	2" Pipe Size	2.375	2.02	2.03	1.00	1.36	3.32	8.07	4.81			
	2 1/2" Stainless Tube	2.500										
7	2 1/2" Pipe Size	2.875	2.27	2.28	1.00	1.36	3.57	8.30	5.30			
	3" Stainless Tube	3.000										
	3" Copper Tube	3.125										
8	3" Pipe Size	3.500	2.76	2.79	1.00	1.36	4.07	8.78	6.27			
	4" Stainless Tube	4.000										
	4" Copper Tube	4.125										
9	4" Pipe Size	4.500	3.98	4.46	1.50	1.78	5.95	10.36	9.10	1.00	3"x3"x3/16"	8"x8"x1/2"
	6" Stainless Tube	6.000										
	6" Copper Tube	6.125										

**FIG. 126 RH (PATENT PENDING) "TELESCOPIC" ASSEMBLY WITH BASE PLATE**



**FIG. 100 RHR (PATENT PENDING) RIGID HANGER/WELD PLATE UNIT**

**Size Range:** 0.50" diameter through 6.125" diameter.

**Hardware:** 316L Stainless Steel and Zinc available upon request.

**Finish:** Stainless Steel Polished at 25RA, Zinc Plated Carbon is at mill finish unless specified.

**Plastic Insert:** **Polysulfone** (color black) up to 320 degrees F.

**Polyamide** (color blue) up to 248 degrees F.

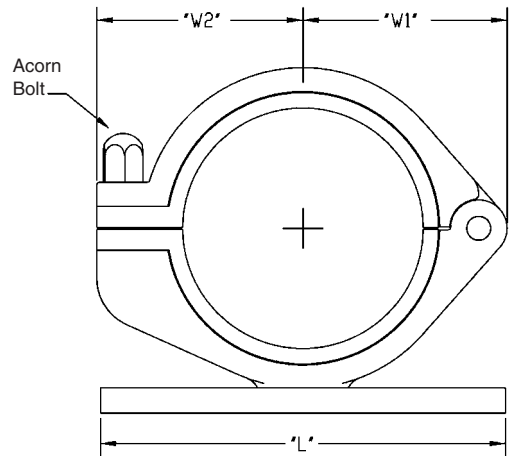
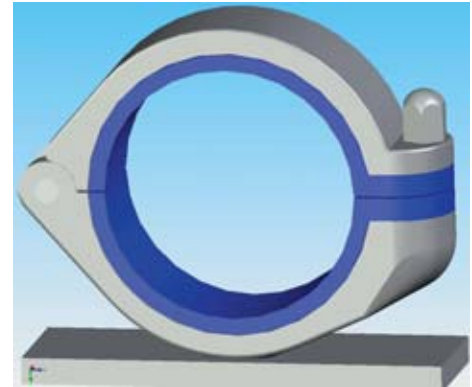
Polyamide only available in Groups 1 - 6.

**Installation:** Field weld sub plate to structure. Tighten acorn bolt with 3/8" socket head to 7 Foot-Pounds (9/16" socket head to 33 Foot-Pounds for Group No. 9).

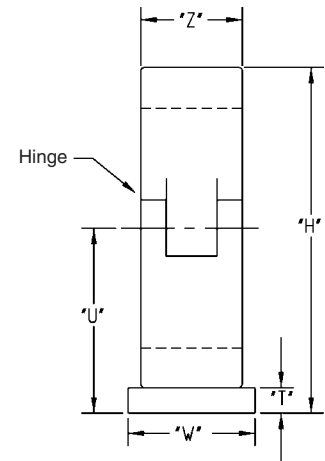
**Ordering:** Specify figure number; tube, pipe or copper size; hardware material and finish; plastic insert material; also indicate if thermal expansion guide (TEG) is required.

**Ordering**

- Examples:**
1. Fig. 100RHR - 1/2" Tube - 316L 25RA - Polysulfone
  2. Fig. 100RHR - 3/4" Pipe - Zinc - Polyamide w/ guide.



GROUP NO	HANGER SIZE	"D" DIAMETER (Inches)	W <sub>1</sub>	W <sub>2</sub>	W	Z	U (min)	H (min)	L
1	1/2" Stainless Tube	0.500	1.01	1.02	1.25	1.00	0.99	1.58	2.50
	1/4" Pipe Size	0.540							
	1/2" Copper Tube	0.625							
2	3/4" Stainless Tube	0.750	1.13	1.15		1.00	1.15	1.86	
	1/2" Pipe Size	0.840							
	3/4" Copper Tube	0.875							
3	1" Stainless Tube	1.000	1.26	1.28		1.00	1.24	2.08	
	3/4" Pipe Size	1.050							
	1" Copper Tube	1.125							
4	1" Pipe Size	1.315	1.50	1.54	1.00	1.48	2.56	4.00	
	1 1/2" Stainless Tube	1.500							
	1 1/2" Copper Tube	1.625							
5	1 1/2" Pipe Size	1.900	1.76	1.79	1.00	1.74	3.08		
	2" Stainless Tube	2.000							
	2" Copper Tube	2.125							
6	2" Pipe Size	2.375	2.02	2.03	1.00	1.98	3.57		
	2 1/2" Stainless Tube	2.500							
7	2 1/2" Pipe Size	2.875	2.27	2.28	1.00	2.23	4.07	5.00	
	3" Stainless Tube	3.000							
	3" Copper Tube	3.125							
8	3" Pipe Size	3.500	2.76	2.79	1.00	2.73	5.07	6.00	
	4" Stainless Tube	4.000							
	4" Copper Tube	4.125							
9	4" Pipe Size	4.500	3.98	4.46	2.00	1.50	4.09	7.67	
	6" Stainless Tube	6.000							
	6" Copper Tube	6.125							



T = 5/16" Group 1-8  
1/2" Group 9

**FIG. 121 RH T**

**HANGER/THREAD MOUNT UNIT**

**Size Range:** 0.50" diameter through 6.125" diameter.

**Hardware:** 316L Stainless steel and Zinc available upon request.

**Finish:** Stainless Steel polished at 25RA, Zinc is at mill finish unless specified.

**Plastic Insert:** **Polysulfone** (color black) up to 320 degrees F

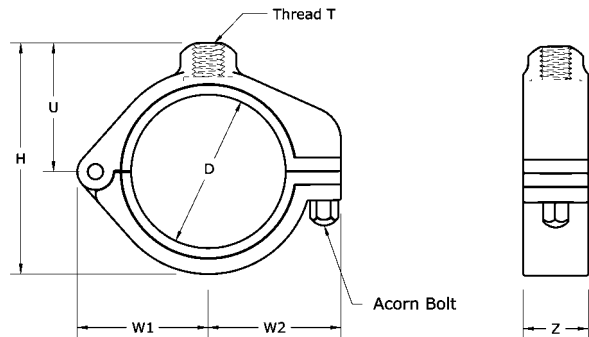
**Polyamide** (color blue) up to 248 degrees F

Polyamide only available in Groups 1 - 6.

**Installation:** Cut rod to required length (if required) thread end to be mounted to hanger housing. Specify figure number; tube, pipe or copper size; hardware material and finish; plastic insert material; also indicate if thermal expansion guides are required. Identify bar length "L" if other than 6" standard.

**Ordering:**

- Examples:** 1. Fig. 121RHT - 3" Tube - 316L 25RA - Polyamide or  
 2. Fig. 121 RHT - 1" Pipe - Zinc - Polysulfone w/ guide



GROUP NO	HANGER SIZE	"D" DIAMETER (inches)	W1	W2	Z	U (min)	H (min)	Bar Dia.	Thread T
1	1/2" Stainless Tube	0.500	1.01	1.02	1.00	0.92	1.50	3/8"	1/2"-16
	1/4" Pipe Size	0.540							
	1/2" Copper Tube	0.625							
2	3/4" Stainless Tube	0.750	1.13	1.15	1.00	1.04	1.75		
	1/2" Pipe Size	0.840							
	3/4" Copper Tube	0.875							
3	1" Stainless Tube	1.000	1.26	1.28	1.00	1.16	2.00		
	3/4" Pipe Size	1.050							
	1" Copper Tube	1.125							
4	1" Pipe Size	1.315	1.50	1.54	1.00	1.41	2.49		
	1 1/2" Stainless Tube	1.500							
	1 1/2" Copper Tube	1.625							
5	1 1/2" Pipe Size	1.900	1.76	1.79	1.00	1.66	3.00		
	2" Stainless Tube	2.000							
	2" Copper Tube	2.125							
6	2" Pipe Size	2.375	2.02	2.03	1.00	1.91	3.50		
	2 1/2" Stainless Tube	2.500							
7	2 1/2" Pipe Size	2.875	2.27	2.28	1.00	2.16	4.00		
	3" Stainless Tube	3.000							
	3" Copper Tube	3.125							
8	3" Pipe Size	3.500	2.76	2.79	1.00	2.66	5.00		
	4" Stainless Tube	4.000							
	4" Copper Tube	4.125							
9	4" Pipe Size	4.500	3.98	4.46	1.50	4.12	7.70	5/8"	5/8"-11
	6" Stainless Tube	6.000							
	6" Copper Tube	6.125							

**FIG. 150**

**SANITARY GASKETS**

**Size Range:** 1/2" through 6".

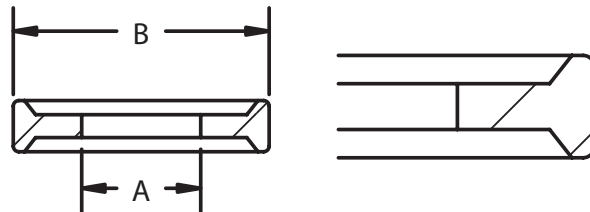
**Material:** Buna-n, Silicone, Teflon, Viton, EPDM and Tufsteel.

**Service:** Used in sealing connection of sanitary tube and fittings.

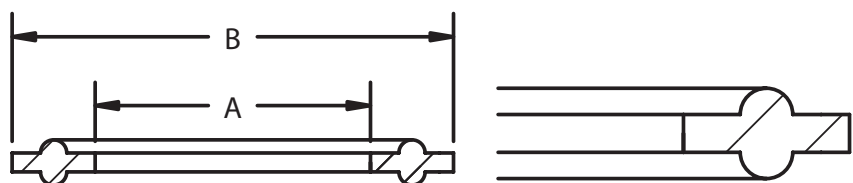
**Ordering:** Specify figure number, name, tube size and material.



TUBE SIZE	Ø "A"	"B"
.25	.2"	0.172
0.50	0.43"	0.172
0.75	0.63"	0.172



TUBE SIZE	A	B
1	0.900	1.984"
1.50	1.400	1.984"
2.00	1.900	2.515"
2.5	2.400	3.05"
3	2.900	3.579"
4	3.869	4.682"
6	5.782	6.57"



**FIG. 151**

**SANITARY CLAMPS**

**Size Range:** 1/2" through 6" tube.

**Material:** 304 Stainless.

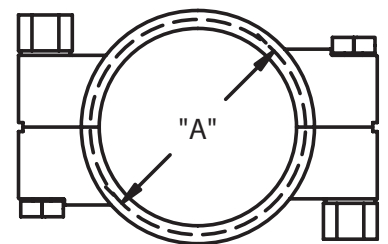
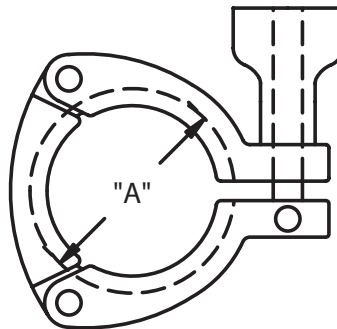
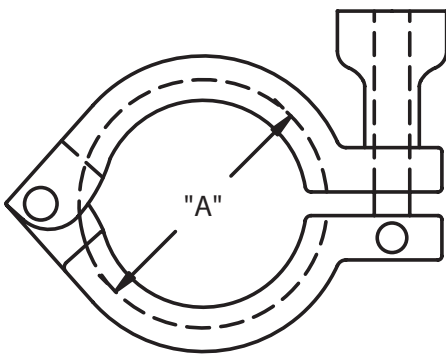
**Finish:** 26 RA.

**Service:** Used in connection of sanitary tube & fittings.

**Ordering:** Specify figure number, name, clamp type number and tube size.



Smooth Style Wing Nut Provided Unless Otherwise Requested



STANDARD CLAMP SANITARY CLAMP TYPE 1	
Size Range: 1/2" to 6" TUBE O.D.	
SIZE (TUBE O.D.)	Ø A
1/2 - 3/4"	1.1"
1-1 1/2"	2.1"
2"	2.6"
2 1/2"	3.1"
3"	3.7"
4"	4.8"
6"	6.7"

3 SEGMENT CLAMP SANITARY CLAMP TYPE 2	
Size Range: 1 1/2" to 4" TUBE O.D.	
SIZE (TUBE O.D.)	ØA
1-1 1/2"	2.1"
2"	2.6"
2 1/2"	3.1"
3"	3.7"
4"	4.8"

HIGH PRESSURE CLAMP SANITARY CLAMP TYPE 3	
Size Range: 1 1/2" to 4" TUBE O.D.	
SIZE (TUBE O.D.)	ØA
1-1 1/2"	2.1"
2"	2.6"
2 1/2"	3.1"
3"	3.7"
4"	4.8"

**FIG. 107 (PATENT PENDING) THERMAL EXPANSION GUIDE FOR PLASTIC INSERTS**

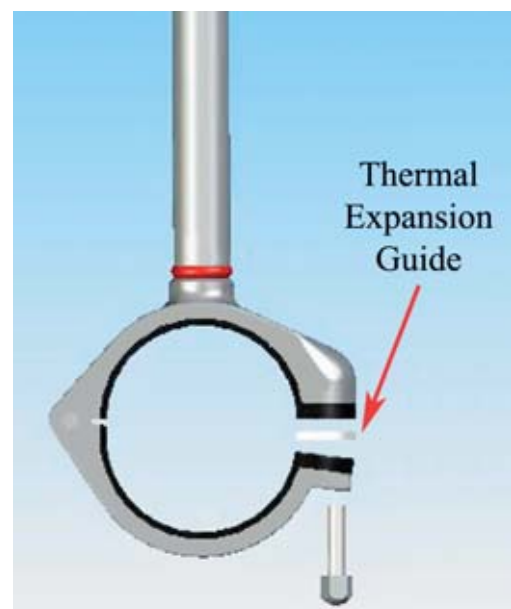
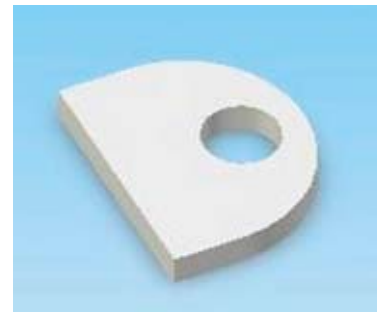
**Size Range:** 0.50" diameter through 6.125" diameter.

**Material:** 1/8" thick Polysulfone (color white) wedge.

**Service:** Provides for axial expansion of the tube or pipe due to thermal expansion.

**Installation:** Assemble between clamp halves during pipe clamp assembly as shown.

**Ordering:** Specify type of Rounded Hygienic Support and add TEG at end of hanger's part number.





**MATERIAL PROPERTIES, TECHNICAL DATA**

Material Properties - Technical Data		
<b>Plastic Insert Material</b>	Polyamide Color: Blue	Polysulfone Color: Black
<b>Part Number Code</b>	PA	PS
<b>Mechanical Properties</b>	Please contact Behringer for Product Data sheets	
<b>Thermal Properties</b>	- 30° F to 248° F	- 50° F to 320° F
<b>Chemical Properties</b>	Resistant to a wide range of chemicals Please contact Behringer for Chemical Properties sheets	

**Metal Parts**

**- Surface finishing**

In addition to the standard surface finish, alternative finishes are available on request



**Group 1  
Mill Finish**



**Group 2  
Brushed**



**Group 3  
Blended Weld**

- All metal parts made of mild carbon steel A-366CQ  
(see order code - components)

**- Stainless Steel Metal Parts**

All metal parts are also available ex stock in two different stainless steel qualities:

- Noncorrodible Stainless Steel
- Noncorrodible and acid resistant Stainless Steel

**- Threads**

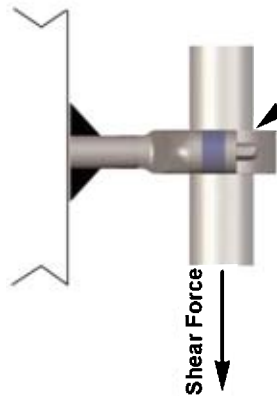
All threaded parts are available with metric threads on request.

**SLOPE CONVERSION CHART, SHEAR FORCE DIAGRAM**

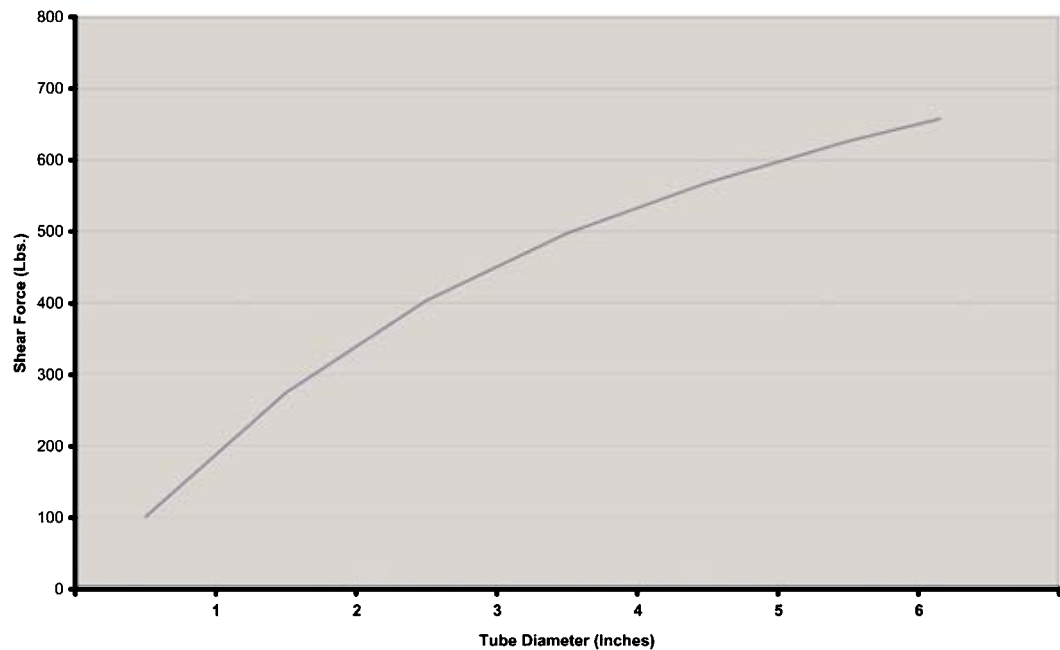
Table 1 - Slope by Percentage (%) (most accurate)			Table 2 - Slope by Degrees <sup>o</sup> (second accurate)			Table 3 - Slope by Inches/foot (least accurate)			
Percent (%)	Degrees (°)	inches/foot	Degrees (°)	Percent (%)	inches/foot	inches/foot	decimal eq	Percent (%)	Degrees (°)
0.1	0.057	0.012	0.1	0.175	0.021	1/64	0.016	0.130	0.075
0.2	0.115	0.024	0.2	0.349	0.042	1/32	0.031	0.260	0.149
0.3	0.172	0.036	0.3	0.524	0.063	3/64	0.047	0.391	0.224
0.4	0.229	0.048	0.4	0.698	0.084	1/16	0.063	0.521	0.298
0.5	0.286	0.060	0.5	0.873	0.105	5/64	0.078	0.651	0.373
0.6	0.344	0.072	0.6	1.047	0.126	3/32	0.094	0.781	0.448
0.7	0.401	0.084	0.7	1.222	0.147	7/64	0.109	0.911	0.522
0.8	0.458	0.096	0.8	1.396	0.168	1/8	0.125	1.042	0.597
0.9	0.516	0.108	0.9	1.571	0.189	9/64	0.141	1.172	0.671
1.0	0.573	0.120	1.0	1.746	0.209	5/32	0.156	1.302	0.746
1.1	0.630	0.132	1.1	1.925	0.231	11/64	0.172	1.432	0.821
1.2	0.688	0.144	1.2	2.100	0.252	3/16	0.188	1.563	0.895
1.3	0.745	0.156	1.3	2.275	0.273	13/64	0.203	1.693	0.970
1.4	0.802	0.168	1.4	2.450	0.294	7/32	0.219	1.823	1.044
1.5	0.859	0.180	1.5	2.625	0.315	15/64	0.234	1.953	1.119
1.6	0.917	0.192	1.6	2.800	0.336	1/4	0.250	2.083	1.193
1.7	0.974	0.204	1.7	2.975	0.357	5/16	0.313	2.604	1.492
1.8	1.031	0.216	1.8	3.150	0.378	3/8	0.375	3.125	1.790
1.9	1.088	0.228	1.9	3.325	0.399	7/16	0.438	3.646	2.088
2.0	1.146	0.240	2.0	3.492	0.419	1/2	0.500	4.167	2.386

**Shear Force Diagram  
For Behringer RH Series Supports**

( - Without Thermal Expansion Guide )  
( - Acorn Bolt Torque 7 Foot - Pounds )



Note: Shear Force Valves may differ slightly for different operating circumstances



3/24/05

**HANGER SPACING**

**SPACING OF HANGERS**

Hangers and/or supports shall be spaced as far apart as economically possible, with due consideration to assure that the sag of the pipe between supports is within limits that will permit drainage and also avoid excessive bending stresses from concentrated loads such as valves and in-line equipment. Contractor shall use the maximum recommended spacing between pipe support specified below. Spacing indicated below may differ from that listed in MSS SP- 69. Additional hangers may be necessary to adequately support concentrated loads such as valves, flanges, or instruments.

**STEEL PIPE HANGER SPACING:**

PIPE SIZE (IN)	MAXIMUM SPACING (FT)
1/2" & 3/4"	6
1" & 1-1/4"	8
1-1/2" & 2"	10
3"	12
4" -16"	16

**COPPER TUBING HANGER SPACING (includes schedule 10 pipe):**

TUBING SIZE (IN)	MAXIMUM SPACING (FT)
3/8" - 3/4"	6
1" - 1-1/4"	8
1- 1/2" - 3"	10
4" - 8"	12

**STAINLESS STEEL SANITARY TUBING HANGER SPACING:**

TUBING SIZE (IN)	MAXIMUM SPACING (FT)
1/2" - 3/4"	6
1" - 1-1/2"	8
2" - 3"	10
4" - 6"	12

**CAST IRON PIPE:**

Maximum 5 ft spacing, place hanger close to joint.

**PLASTIC PIPING:**

Support in accordance with manufacturer's recommendations.

# BEHRINGER®

For additional information visit  
our Sanitary Section  
on our Website:  
[www.behringersystems.com/  
BehringerSanitaryClamps.html](http://www.behringersystems.com/BehringerSanitaryClamps.html)

- Download pdf's  
of all catalog items
- Autocad Drawings

For additional  
information call:  
**973-948-0226**  
ask for inside sales

## BEHRINGER®

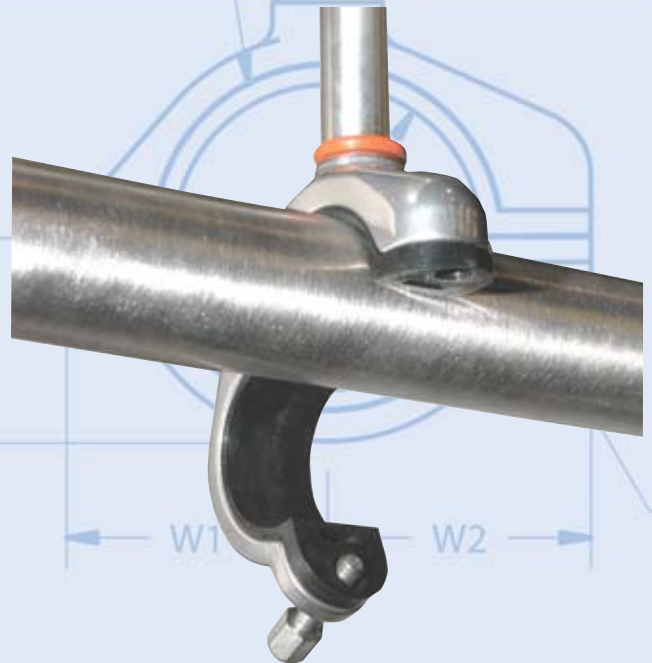
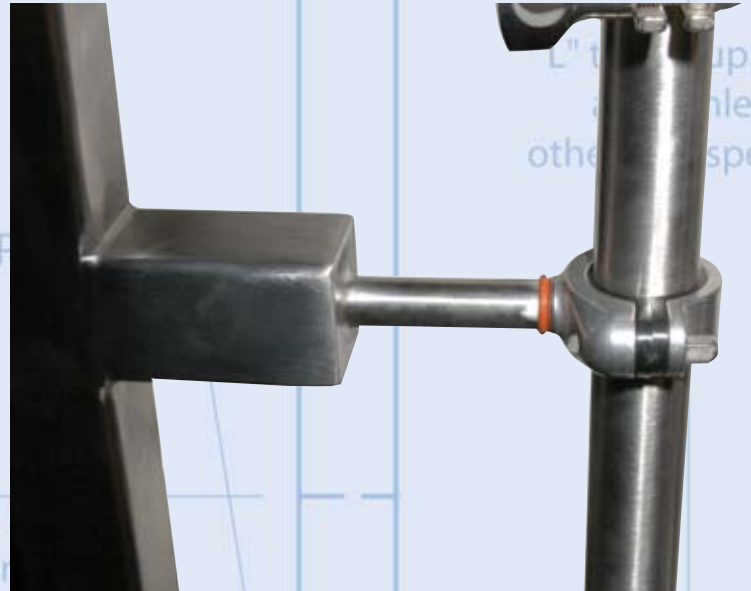
17 Ridge Road  
Branchville, NJ 07826

Phone: 973-948-0226

Fax: 973-948-2562

[www.behringersystems.com](http://www.behringersystems.com)

Email: [cserv@behringersystems.com](mailto:cserv@behringersystems.com)



**Your Local Stocking Distributor:**

