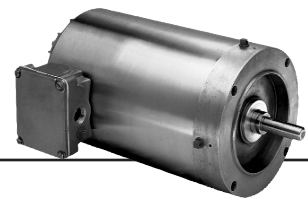


Paint Free Washdown, Three Phase, Totally Enclosed C-Face Footless



APPLICATIONS:

Designed to meet requirements for food processors, canners, meat packers, bakeries, dairies, drug and cosmetic manufacturers for sanitary, easily cleaned motors.

FEATURES:

- Inverter Grade[®] Insulation System (Meets NEMA[®] MG-1 Part 31)
- VBX[®] Bearing Isolators By InproSeal On Both Ends TEFC (Drive End On TENV)
- 303 Stainless Steel Shaft
- Multiple Stainless Steel T-type drains
- Stainless Steel Frame
- Double Contact Double Sealed Ball Bearings
- Laser-Etched Oversized Nameplate
- Totally Enclosed Fan Cooled (TEFC) Except Where Noted
- RTV-Sealed Lead Exit
- Nitrile Gasket on Conduit Box

HP	RPM	Voltage	Frame	Catalog Number	List	Discount Symbol	SF	"C" Dim. (inches)	Ship Wt. (lbs.)	Full Load Eff.	Full Load Amps	Notes
1/2	1800	208-230/460	56C	WDP12S2ACR	\$484	DS-3PF	1.15	12.2	36		2.0-1.9/0.9	28
	1800	575	56C	WDP12S2GCR	\$484	DS-3PF	1.15	12.2	36		0.7	28
	1200	208-230/460	56C	WDP12S3DCR	\$495	DS-3PF	1.15	12.3	30		2.2-2.2/1.1	28
3/4	1800	208-230/460	56C	WDP34S2ACR	\$560	DS-3PF	1.15	12.2	37		2.8-2.7/1.3	28
	1800	575	56C	WDP34S2GCR	\$560	DS-3PF	1.15	12.2	37		1.0	28
1	1800	208-230/460	145TC	WDP1S2ACR	\$580	DS-3PF	1.15	13.8	32	85.5	3.5-3.4/1.7	28
	1800	575	145TC	WDP1S2GCR	\$580	DS-3PF	1.15	13.8	32	85.5	1.4	28
	1800	208-230/460	56C	WDP1S2AFCR	\$580	DS-3PF	1.15	13.7	38		3.5-3.4/1.7	28
	1800	575	56C	WDP1S2GFCR	\$580	DS-3PF	1.15	13.7	38		1.4	28
	1200	208-230/460	56C	WDP1S3DCR	\$609	DS-3PF	1.15	13.8	32		4.7-4.8/2.4	28
1-1/2	1800	208-230/460	145TC	WDP32S2ACR	\$606	DS-3PF	1.00	13.8	33	87.5	4.9-4.8/2.4	28
	1800	575	145TC	WDP32S2GCR	\$606	DS-3PF	1.00	13.8	33	87.5	1.9	28
	1800	208-230/460	56C	WDP32S2AFCR	\$606	DS-3PF	1.00	13.7	33		4.9-4.8/2.4	28
	1800	575	56C	WDP32S2GFCR	\$606	DS-3PF	1.00	13.7	33		1.9	28
2	1800	208-230/460	145TC	WDP2S2ACR	\$692	DS-3PF	1.15	14.1	44	82.5	7.0-7.0/3.5	-
	1800	575	145TC	WDP2S2GCR	\$692	DS-3PF	1.15	14.1	44	84	2.8	-
	1800	208-230/460	56C	WDP2S2AFCR	\$692	DS-3PF	1.15	14.0	44		7.0-7.0/3.5	-
	1800	575	56C	WDP2S2GFCR	\$692	DS-3PF	1.15	14.0	44		2.8	-

Note 28 TENV Enclosure

† All non-Emerson Electric Co. marks shown within this document are properties of their other respective owners