

FIG. 100

WELD PLATE MOUNT

Size Range: 1/4" tube diameter through 8" tube diameter.

Hardware

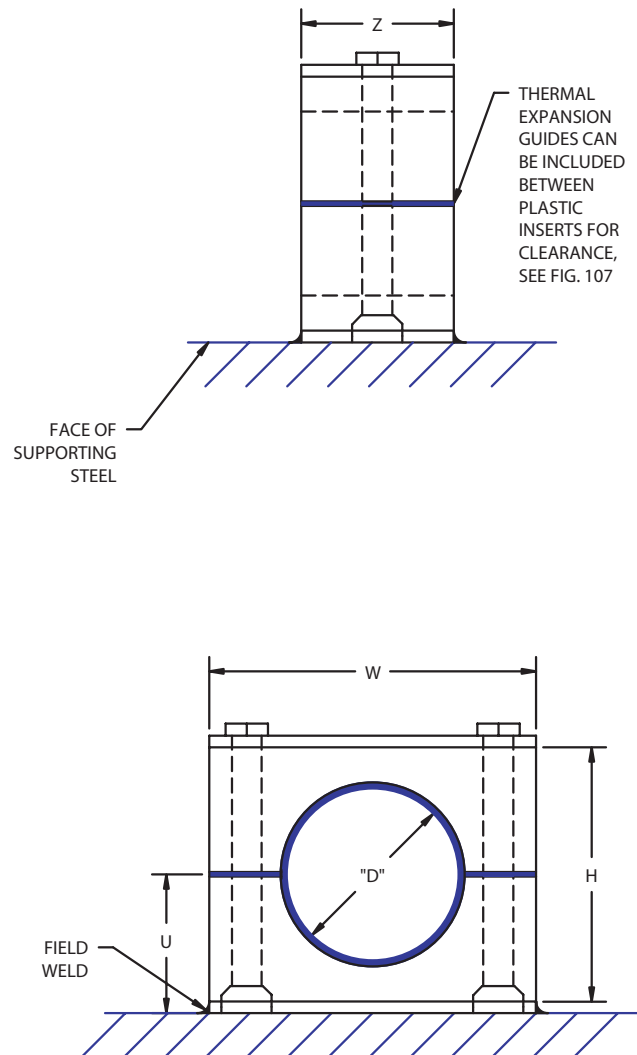
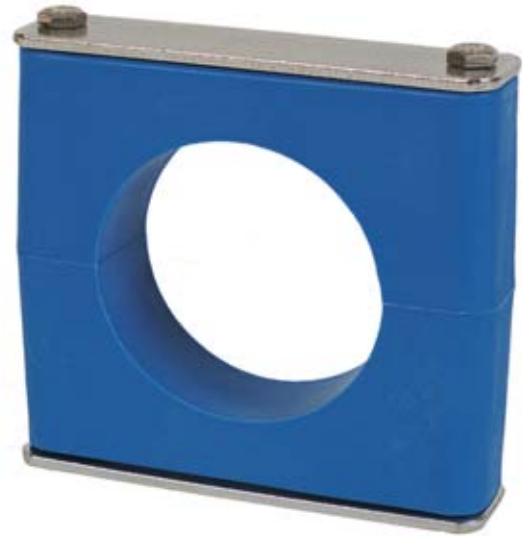
Material: Carbon Steel; 304 Stainless; 316 Stainless.

Finish: Plain carbon; electro-zinc plated carbon; 304 or 316 mill finish; 304 or 316 electro-polished.

Plastic Inserts: Polypropylene (color blue) up to 212° F.
Santoprene (color tan) up to 302° F.

Installation: Weld bottom plate to structure or supporting member, let cool before mounting plastic blocks.

Ordering: Specify figure number, name, tube or pipe size, group number, hardware material and finish, plastic insert material. Also specify if thermal expansion guides are required for clearance.



TUBE OR PIPE SIZE	"D" INCHES	GROUP NO.	INCHES				BOLT SIZE
			W	H	Z	U	
1/4 T	.250	3	1.88	1.38	1.19	0.81	1/4-20
3/8 T	.375						
1/2 T	.500						
3/4 T	.750						
1/2 P	.840						
1 T	1.000	6	3.34	2.63	1.19	1.44	1/4-20
1/4 T	.250						
3/8 T	.375						
1/2 T	.500						
5/8 T	.625						
3/4 T	.750						
1/2 P	.840						
7/8 T	.875						
1 T	1.000						
3/4 P	1.050						
1-1/4 T	1.250						
1 P	1.315						
1-1/2 T	1.500						
1-1/4 P	1.660						
1-1/2 P	1.900						
2 T	2.000						
2 T	2.000						
2 P	2.375						
2-1/2 T	2.500						
2-1/2 P	2.875	7A	5.77	4.80	1.19	2.54	1/4-20
3 T	3.000						
3-1/2 T - 3 P	3.500						
4 T	4.000	8	8.88	7.65	1.50	4.01	3/8-16
6 T	6.000	9	12.50	10	1.75	5.38	5/8 - 11