

STANDARD SERIES

Range From 1/4" O.D. to 4 1/2" O.D.

The modern BEHRINGER PIPE SUPPORTING SYSTEM is available in five series: Standard, Heavy, Heavy 4, Twin and Saddle.

Pipe, tube and hose clamp assemblies are quality built supporting systems with unlimited application in: Offshore installations, off-highway equipment, marine hydraulics, shipbuilding, mining equipment, steel mills, foundries, nuclear power plants, etc.

Engineering, plant and maintenance personnel appreciate the simplicity, vibration dampening, shock and noise absorbing qualities of the Behringer Clamp Systems, which comply with OSHA, Nuclear, Environmental, ASTM, and Coast Guard Standards.

All systems can be quickly and effectively secured and are virtually maintenance free.

Clamping Halves and Saddles are available in Polypropylene (PP) or Santoprene (SP). Both plastic materials are resistant to salt water and most chemicals and oils and offer a wide range of thermal properties. **Aluminum clamp halves are also available from stock.**

Insert Material

*PP (Polypropylene)

SP (Santoprene)

AL (Aluminum)

Temperature Range

-22 to +212 deg. F

-40 to 302 deg. F

-65 to 750 deg. F

Color

Black

Tan

Silver

* Dark Color of polypropylene provides maximum resistance to ultra-violet rays

Behringer Metal Works, established in 1869, with its modern and complete manufacturing facilities, is always ready to facilitate any special requirements for Behringer Pipe Systems.

STANDARD SERIES CLAMPS will accommodate pipes, tubes and hose ranging in size from 1/4" O.D. to 3 1/2" O.D. Clamps for tube and mm sizes, other than those listed, can be furnished on request. Metric hardware available upon request.

A clamp assembly consists of a weld plate†, (2) identical clamp halves, a cover plate or washers and 2 hex head bolts. Standard weld plates and cover plates are furnished in plain carbon steel or zinc plated finish. **Stainless Steel hardware is available from stock. (Type 304 and 316 stainless).**

CLAMPS FOR STACKING: Require stacking bolts and safety plates.

RAIL ASSEMBLY: Strut channel mounted clamp assemblies can be quickly installed for all clamp groups with the patented Behringer Rail Clamping Nut. Nuts can be inserted at any place on the rail (see illustration on opposite page).

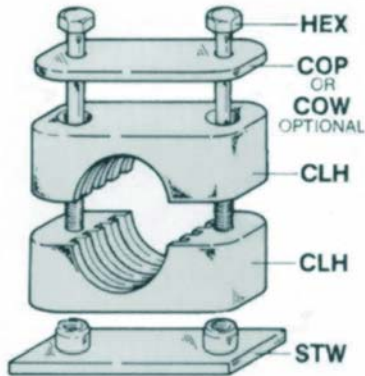
RAIL MOUNTED: (RAL 1 Channel) Clamp assemblies are used with weld plates or the Behringer rail clamping nuts (RCN) (see illustration on opposite page). Rail mounting allows for faster installations and easier relocation.

†Behringer weld plates incorporate a new U.S. and foreign patented technique for attaching the weld nut to the weld plate assuring consistent and uniform torque and pull resistance. U.S. Patent No. 4,281,786.

REFER TO CLAMP DRAWING PG 2 OF 4 STANDARD SERIES

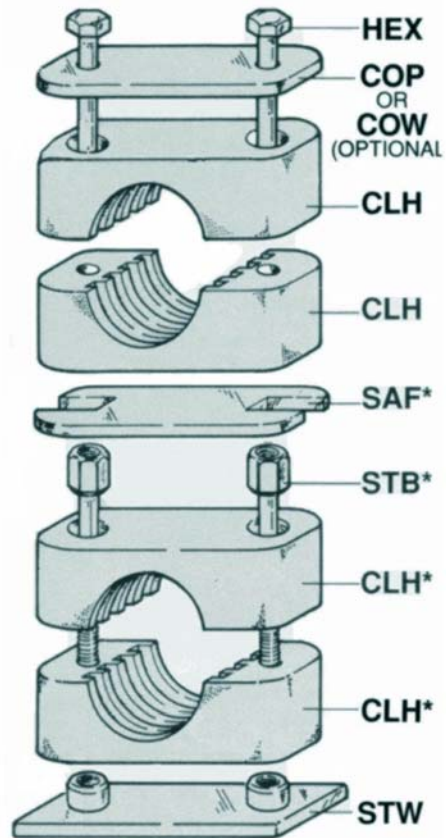
STANDARD SERIES DIMENSIONS IN INCHES											
GROUP NO.	TUBE SIZE		PIPE SIZE		W	H	C		LENGTH OF BOLT B	WGT. IN LBS. UNIT	U
	OUTSIDE DIA. D	ORD ER NO.	NOMINAL DIA. D	ORDER NO.			DEC.	FRAC.			
0	1/4 3/8	0025 0038	P1/8 (.405)	00405	SEE DWG		-	-	1 1/4	.14	-
1	1/4 3/8	1025 1038	P1/8 (.405)	10405	1 3/8	1 3/8	.790	25/32	1 1/4	.19	11/16
2	1/2 5/8	2050 2062	P1/4 (.540) P3/8 (.675)	20540 20675	1 5/8	1 3/8	1.020	1 11/32	1 1/2	.23	13/16
3	3/4 7/8 1	3075 3087 3100	P1/2 (.840)	30840	1 7/8	1 3/8	1.300	1 19/64	1 1/2	.26	13/16
4	1 1/8	4113	P3/4 (1.050)	41050	2 1/4	1 5/8	1.580	1 37/64	1 3/4	.30	15/16
5	1 1/4 1 1/2	5125 5150	P1 (1.315) P1 1/4 (1.660)	51315 51660	2 3/4	2 3/8	2.050	2 3/64	2 1/2	.41	1 5/16
6	1 3/4 1 3/8	6175 1038	P1 1/2 (1.900)	61900	3 3/8	2 5/8	2.600	2 19/34	2 3/4	.49	1 7/16
7	2 1/4 3 3 1/2	7225 7300	P2 (2.375) P2 1/2 (2.875) P3 (3.500)	72375 73875 73500	5	4 3/8	4.250	4 1/4	4 1/2	.92	2 5/16
7A	4 4 1/2	7A40 0	P4 (4.500)	7A4500	5 3/4	4 53/64	4.948	4 61/64	5	1.2	2 17/32

STANDARD SERIES

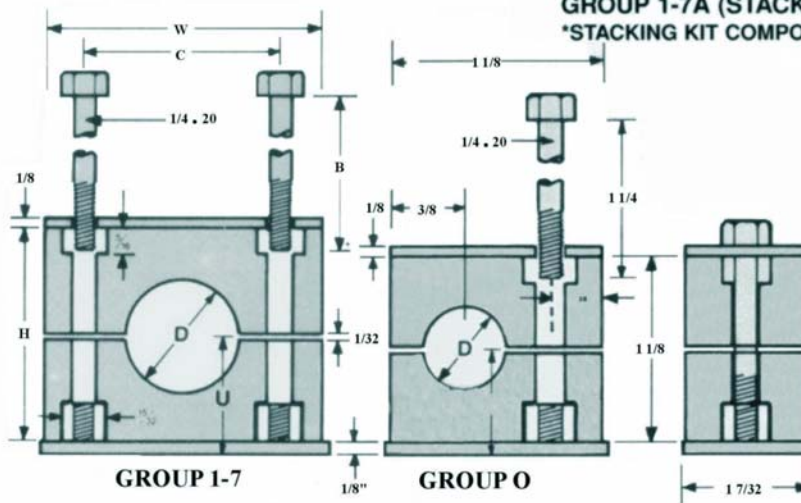


GROUP 1-7

CLAMP DRAWINGS



GROUP 1-7A (STACK OF 2)
*STACKING KIT COMPONENTS

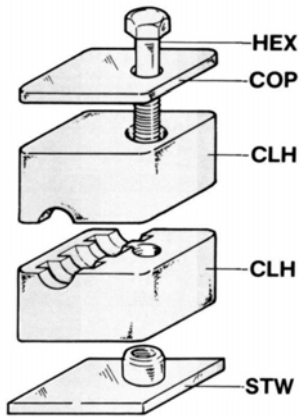


GROUP 1-7

GROUP 0

1 7/32

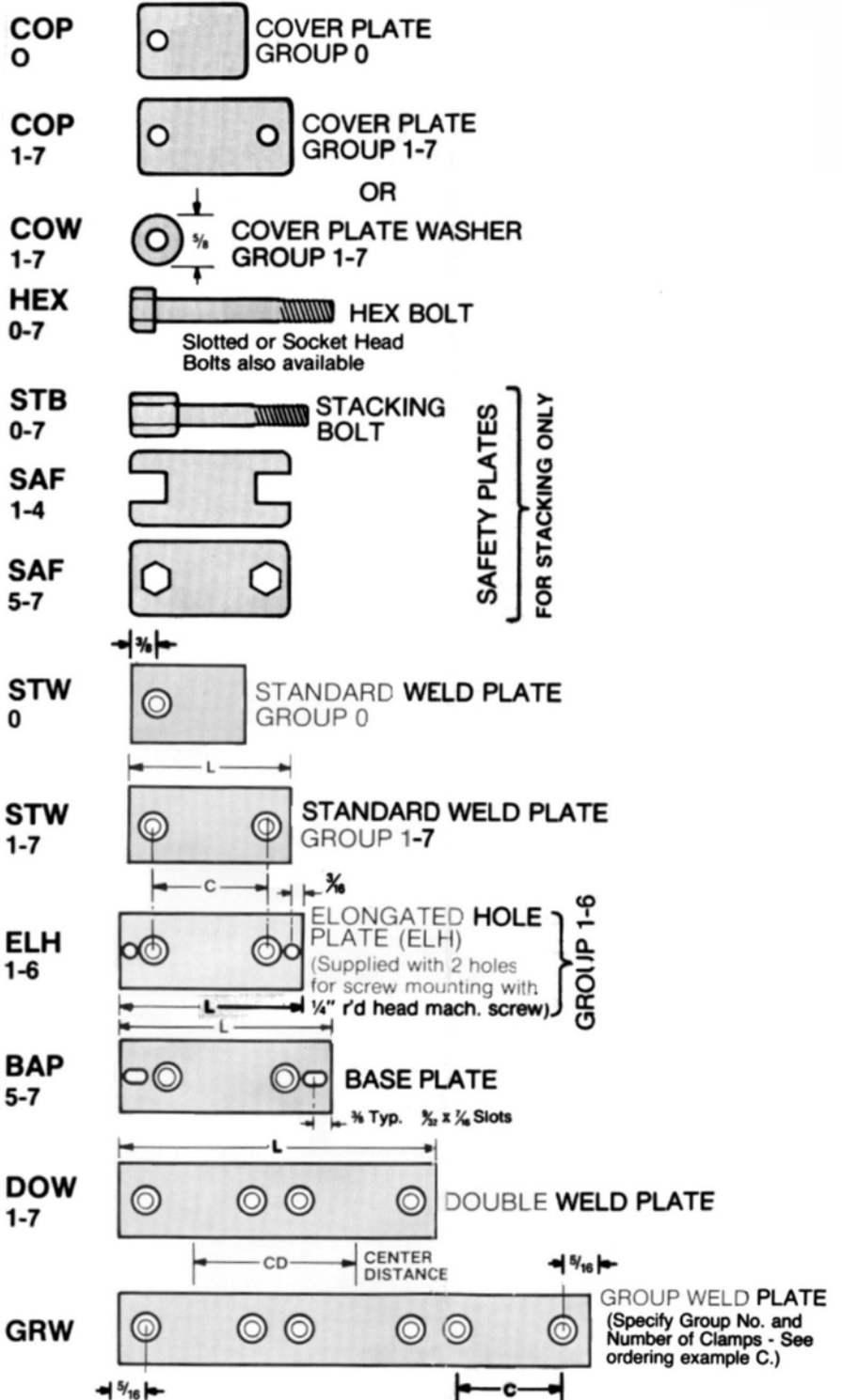
STANDARD SERIES



REFER TO CLAMP DRAWING ON PG 2 OF 4
STANDARD SERIES

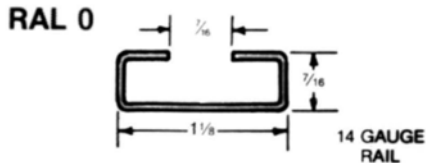
APPROXIMATE DIMENSIONS IN MILLIMETERS

GROUP NO.	D	W	H	C	B
0	6-11	-	-	-	32
1	6-11	35	29	20	32
2	12-18	41	35	26	38
3	19-26	48	35	33	38
4	27-31	57	41	40	44
5	32-42	70	60	52	64
6	43-51	86	67	66	70
7	52-90	127	111	108	114
7A	101-114	146	123	126	127

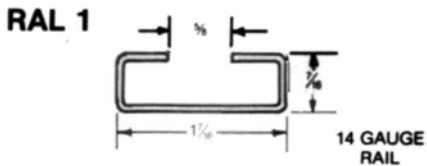


STANDARD SERIES

PARTS FOR STANDARD SERIES

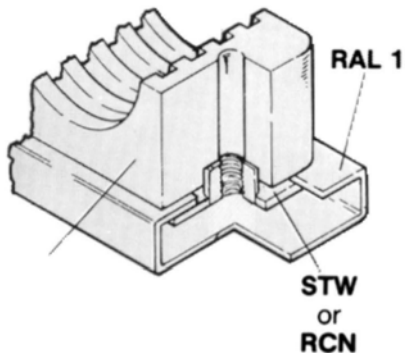


Standard length: 6 ft.



Standard length: 6 ft.

Special lengths made to order



Please qualify 1/4-20 or 6mm hardware

BEHRINGER RAIL CLAMPING NUT

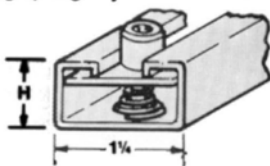
RCN-0 for RAL-0

RCN-1 for RAL-1

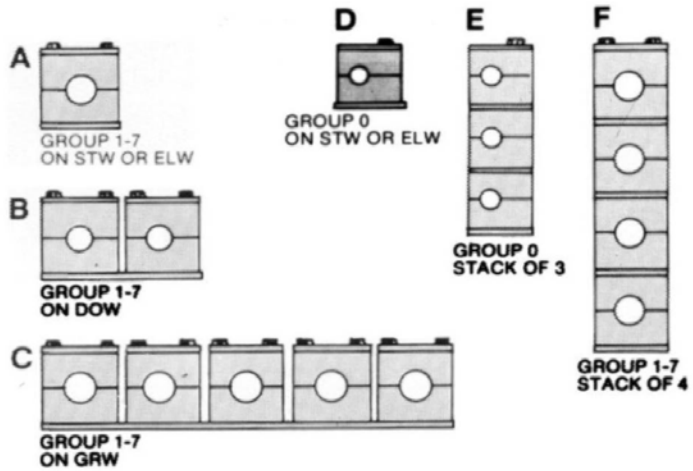
RCN-2 with short spring

RCN-3 with long spring

For
Strut Mount



	RCN-2	RCN-3
STRUT "H"	13/16	15/16



- | | | |
|----|---|---|
| A | For 1/2" O.D. Tube
Material - PP
Cover Plate (COP)
Standard Weld Plate (STW)
2050-PP-COP-STW | A. For 3/4" Pipe
Material - PP
Cover Washer (COW)
Elongated Hole Plate (ELH)
41050-PP-COW-ELH |
| B | For 3/4" O.D. Tube
Material - Santoprene
Cover Plate (COP)
Double Weld Plate (DOW)
3075-SP-COP-DOW | C. For 3/4" Pipe
Material - PP
Cover Washer (COP)
Group Weld Plate (GRW)
41050-PP-COP-GRW-5 |
| D | For 1/4" O.D. Tube
Material - PP
Standard Weld Plate (STW)
0025-PP-STW-COP | E. For 1/4" O.D. Tube
Material - Santoprene
Standard Weld Plate (STW)
Elongated Hole Plate (ELH)
0025-SP-STW-COP
2x0025-SP-SAF-STB |
| F. | For 3/8" O.D. Tube
Material - PP
Cover Plate (COP)
Standard Weld Plate (STW)
1038-PP-COP-STW
3x1038-PP-SAF-STB | Note: Hex bolts will automatically be furnished unless otherwise specified. |

REFER TO COMPONENT DRAWINGS ON PG 3 OF 4 STANDARD SERIES

GROUP NO.	WELD PLATE DIMENSIONS IN INCHES						
	STW L	BAP L	DOW			GRW	
			NO. OF CLAMPS	L	CENTER DIST. CD	NO. OF CLAMPS	CENTER DIST. CD
0	1 3/16	-	-	-	-	-	-
1	1 1/2	3	2	3	1.51	↑	1.51
2	1 3/4	3 1/4	2	3 1/2	1.74		1.74
3	2	3 1/2	2	4	2.02		2.02
4	2 5/16	3 13/16	2	4 11/16	2.30		SPECIFY
5	2 3/4	4 1/4	2	5 5/8	2.77		2.77
6	3 3/8	4 7/8	2	6 7/8	3.32		3.32
7	5	6 1/2	2	10 7/32	5.24		5.13
7A	5 3/4	4 3/16	2	1 11/16	6.02		6.023