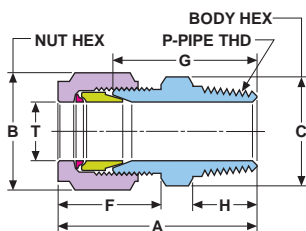


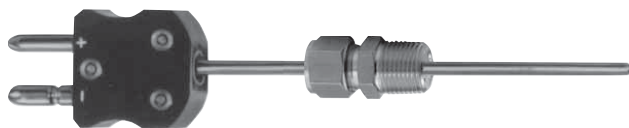
Male Thermocouple Connector: CMT (Fractional)



Part Number*	T P		Dimensions — inches					
	Tube O.D.	Pipe Thd.	A	B		C		H
				Hex Flat	Hex Flat	F	G	
1CMT1[]	1/16	1/16	.97	5/16	5/16	.48	.75	.38
1CMT2[]	1/16	1/8	1.13	5/16	7/16	.48	.81	.38
1CMT4[]	1/16	1/4	1.22	5/16	9/16	.48	1	.56
2CMT2[]	1/8	1/8	1.22	7/16	7/16	.67	.91	.38
2CMT4[]	1/8	1/4	1.44	7/16	9/16	.67	1.13	.56
3CMT2[]	3/16	1/8	1.27	1/2	7/16	.70	.95	.38
3CMT4[]	3/16	1/4	1.50	1/2	9/16	.70	1.19	.56
4CMT2[]	1/4	1/8	1.33	9/16	1/2	.77	1	.38
4CMT4[]	1/4	1/4	1.52	9/16	9/16	.77	1.19	.56
4CMT6[]	1/4	3/8	1.58	9/16	11/16	.77	1.25	.56
4CMT8[]	1/4	1/2	1.80	9/16	7/8	.77	1.47	.75
6CMT4[]	3/8	1/4	1.64	11/16	5/8	.83	1.28	.56
6CMT6[]	3/8	3/8	1.63	11/16	11/16	.83	1.28	.56
6CMT8[]	3/8	1/2	1.84	11/16	7/8	.83	1.50	.75
8CMT8[]	1/2	1/2	1.97	7/8	7/8	.92	1.50	.75
12CMT12[]	3/4	3/4	2.08	1 1/8	1 1/16	.97	1.63	.75
20CMT20[]	1 1/4	1 1/4	3.06	1 7/8	1 7/8	1.56	2.17	.94

The CMT body does not contain a sizing angle or butt seal. As a result, the thermocouple can be extended beyond the fitting's NPT thread end.

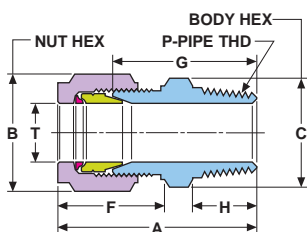
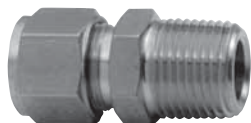
Example: HOKE Gyrolok CMT assembled to thermocouple.



Assembly Instruction:

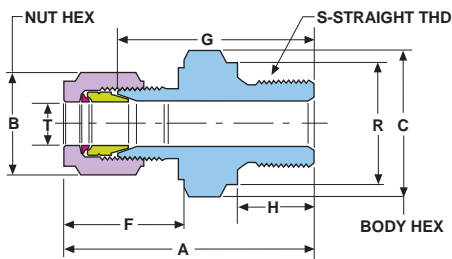
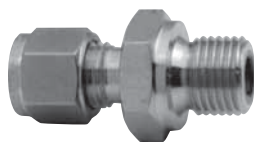
Because the thermocouple is not bottomed out within the fitting body, follow these simple steps before carrying out HOKE Gyrolok assembly instructions on page 53.

1. Position the length of the thermocouple to extend past the fitting's NPT end.
2. Once correctly positioned, carefully hold thermocouple in place to prevent shifting during assembly



Male Thermocouple Connector: CMT/ME, CMT/MC (Metric) Metric Tube with NPT or RT tapered threads

Part Number*		T	P	Dimensions — mm							
NPT Threads	RT Threads	Tube O.D.	Pipe Thd.	A	B		C		F	G	H
					Hex Flat	Hex Flat	F	G	H		
6CMT2[]ME	6CMT2[]MC	6	1/8	34.8	14.3	12.7	19.5	26.4	9.5		
6CMT4[]ME	6CMT4[]MC	6	1/4	39.5	14.3	14.3	19.5	31.2	14.3		
8CMT4[]ME	8CMT4[]MC	8	1/4	39.8	15.9	14.3	19.1	31.8	14.2		



Male Thermocouple Connector: CMT/MA (Metric) Metric Tube with RS parallel threads

Part Number*		T	S	Dimensions — mm								
Part Number*	Tube O.D.	Tube O.D.	Straight Thd.	A	B		C		F	G	H	R
					Hex Flat	Hex Flat	F	G	H	R		
6CMT4[]MA	6	1/4	40.1	14.3	19.1	19.5	31.8	12.0	18.0			

RS parallel thread ends are typically used with a gasket having a bonded elastomer seal. RP-type gaskets may also be used.

* [] see page 6 for material specifications.