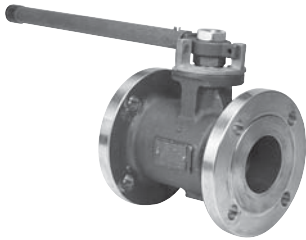


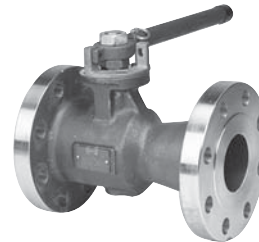
# One and Two-Piece Stainless Steel Ball Valves Illustrated Index

Unibody Stainless Steel Flanged Ball Valve  
ANSI Class 150



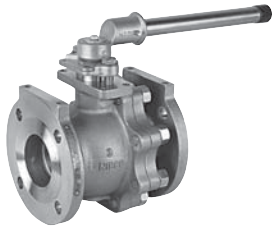
**F-510-S6-R-66-FS**  
Sizes ½" thru 12"  
Flanged  
Page 80

Unibody Stainless Steel Flanged Ball Valve  
ANSI Class 300



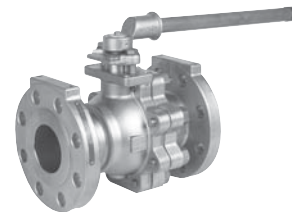
**F-530-S6-R-66-FS**  
Sizes ½" thru 12"  
Flanged  
Page 81

Split-Body Stainless Steel Flanged Ball Valve  
ANSI Class 150



**F-515-S6-F-66-FS**  
Sizes ½" thru 12"  
Flanged  
Page 82

Split-Body Stainless Steel Flanged Ball Valve  
ANSI Class 300



**F-535-S6-F-66-FS**  
Sizes ½" thru 12"  
Flanged  
Page 83

**Pressure  
Temperature  
Chart**

Page 84