

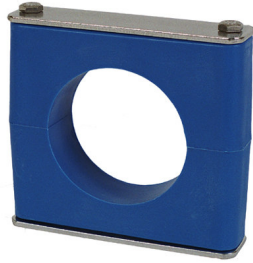
BEHRINGER®

SANITARY SUPPORTS

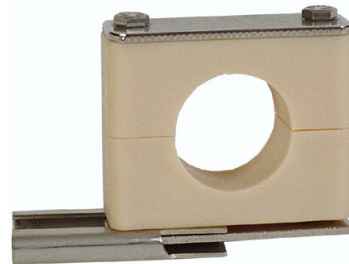
Clamp Diameters Range from 1/4" thru 3 1/2 inch.

Behringer's Response To Demand:

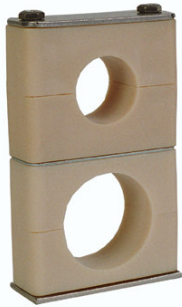
- All Hardware Material Type 316 or 304 Stainless or Zinc Plated Steel
- Modular Design Allows Any Combination of Stacking/Hanging
- Multiple Options for Ease of Installation
- Plastic Blocks Available in Polypropylene of FDA Approved Santoprene



STW/Standard Weld Plate
For Weld Mount



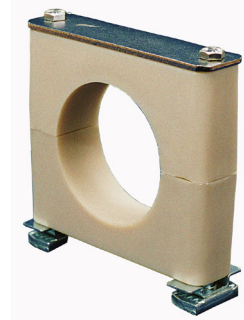
RAL/RAIL Mounted for
Easy Lateral Adjustment



Modular Stacking Arrangement
Using STB/Stacking Bolts



Modular Stacking Arrangement
using TRP/Transfer Plate to
Achieve Stacking of Different
Group Numbers



Strut Clips for Mounting
Supports to Strut



CMP/Ceiling Mounted Plate
for Bolting or Welding
Hanging Assembly



BAP/Slotted Base Plate
for Bolted Mount

Modular
Hanging
Arrangement
with offset to
allow Tubes to
run in
different
directions

