

FIG. 278

EYE ROD WELDED

Size Range: 3/8" and 5/8" diameter.

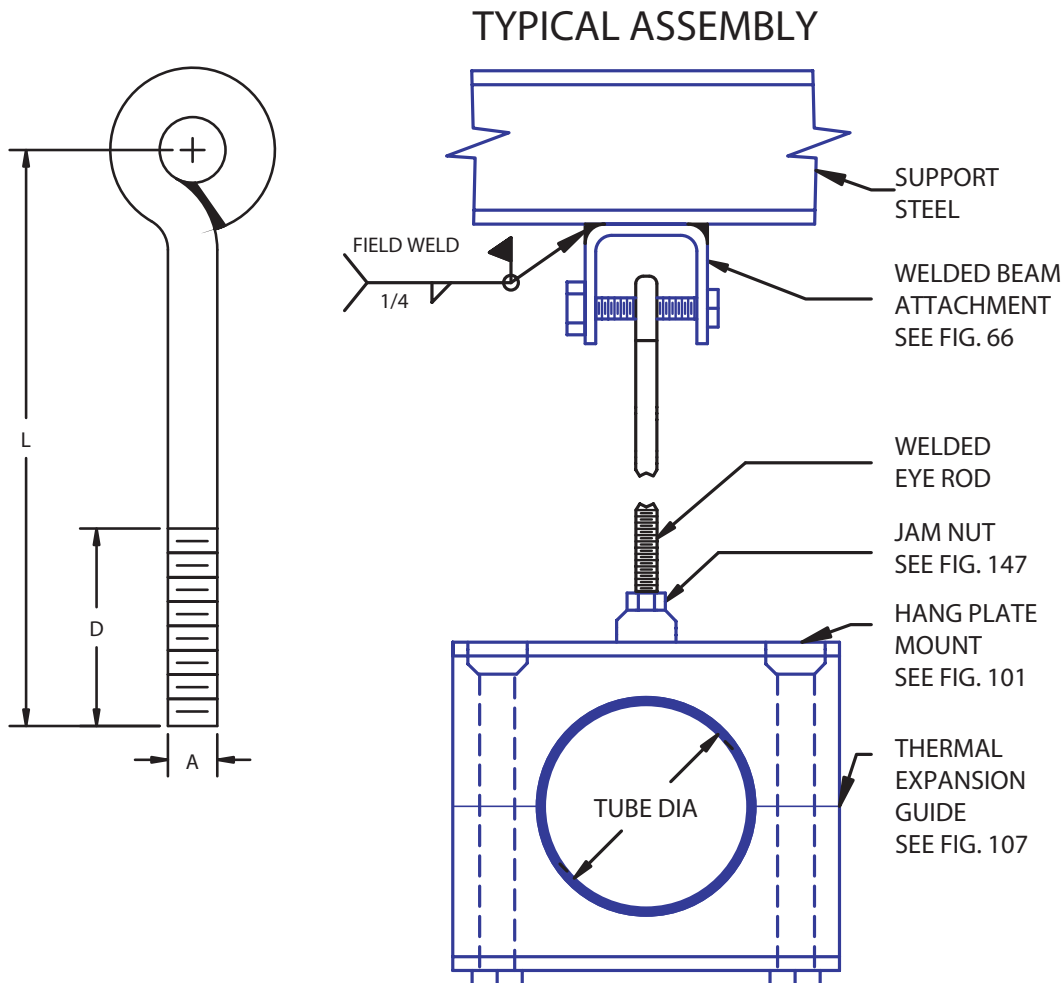
Material: Carbon; 304 Stainless; 316 Stainless.

Finish: Plain carbon; electro-zinc plated carbon; 304 or 316 mill finish; 304 or 316 electro-polished.

Features: I.D. of eye will accommodate a bolt diameter 1/8" larger than rod diameter.

Service: Allows for economical and efficient solution to accommodate for slope in runs of tube or pipe (see assembly example).

Ordering: Specify figure number, name, rod diameter, rod length "L", and finish. Specify thread length if other than standard.



HANGER RODS

ROD SIZE "A"	"D" STANDARD ROD THREAD LENGTH	MAX LOAD LBS
3/8	2-1/2"	730
5/8	2-1/2"	2160