

FIG. 133
FIG. 134

STANDARD BEAM ATTACHMENT
HEAVY BEAM ATTACHMENT

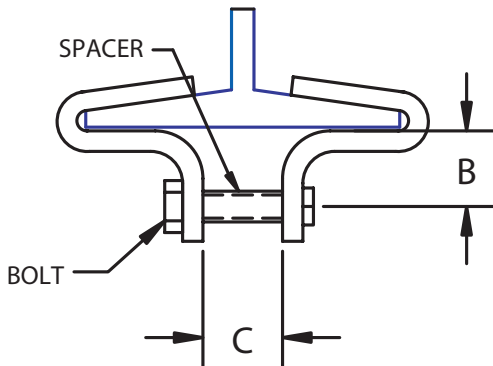
Size Range: Beam flange width 4" through 12".

Material: Plain or galvanized.

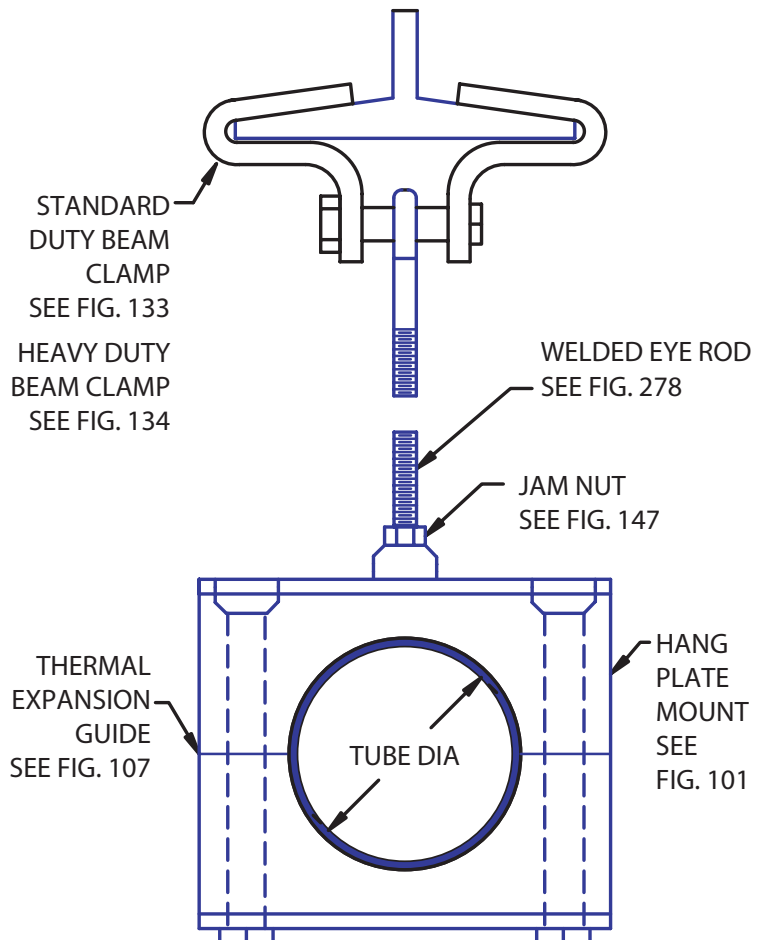
Components: Two half-clamps, pipe spacer, bolt and nut assembled.

Service: A spacer if furnished for use with a weldless eye nut (Behringer figure number 290). The spacer may be removed for use with a welded eye rod (Behringer Figure number 278).

Ordering: Specify figure number, name, width of flange and finish.



TYPICAL ASSEMBLY



INCHES		WEIGHT (lbs)	
FLANGE WIDTH	MAX FLANGE THICKNESS	FIG. 133 Std. Duty	FIG. 134 Heavy Duty
4	1/2	0.91	3.82
5	5/8	1.00	4.35
6	3/4	1.15	4.52
7	7/8	1.29	4.84
8		1.44	5.1
9	1	-	5.83
10		-	6.25
11		-	6.67
12		-	7.09

	INCHES				LBS
	C	B	BOLT SIZE	SPACER O.D.	MAX LOAD
FIG. 133	1/2	1 3/8	3/8	1 1/16	1,000
FIG. 134	3/4	2 1/4	5/8	1 1/16	3,000