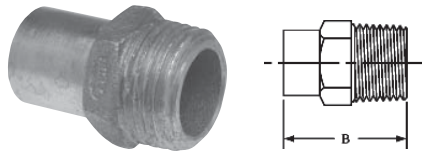


## ADAPTERS *continued*



704-2-H  
Hose Adapter Ftg x Hose – Cast

NOM. SIZE	APPROX. NET WT./LBS.	DIM. B INCHES
3/4 F x 3/4 H	0.16	1 <sup>5</sup> / <sub>8</sub>

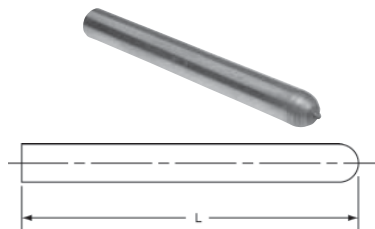
NOTE: Fits 1/2", 5/8" and 3/4" Garden Hose.

## AIR CHAMBERS



619  
Air Chamber Ftg. – Wrot

NOM. SIZE	APPROX. NET WT./LBS.	DIM. A INCHES	DIM. L INCHES
1/2 x 6	0.21	1	6
1/2 x 12	0.41	1	12
1/2 x 14	0.78	1 <sup>1</sup> / <sub>8</sub>	14
3/4 x 12	0.40	1	12

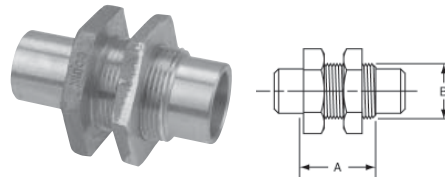


620-L  
Air Chamber or Stub-Out  
Ftg. – Wrot

As Air Chamber, just solder one joint. When used as Stub-Out, simply pressure test system then cut off stub-out (save piece for future use) and install valve or fixture.

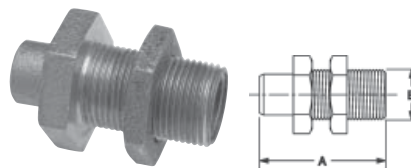
NOM. SIZE	APPROX. NET WT./LBS.	DIM. L INCHES
1/2 x 6	0.14	6
1/2 x 8	0.19	8
1/2 x 10	0.24	10
1/2 x 12	0.28	12
3/4 x 12	0.46	12

## BULKHEAD FITTINGS



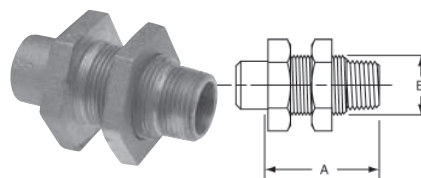
750  
Bulkhead Fitting C x C – Cast

NOM. SIZE	APPROX. NET WT./LBS.	DIM. A INCHES	DIM. B INCHES
1/2	0.48	1 <sup>1</sup> / <sub>4</sub>	1
3/4	0.77	1 <sup>9</sup> / <sub>32</sub>	1 <sup>1</sup> / <sub>4</sub>
1	1.30	1 <sup>1</sup> / <sub>2</sub>	1 <sup>5</sup> / <sub>8</sub>
1 1/2	2.87	1 <sup>1</sup> / <sub>2</sub>	2 <sup>3</sup> / <sub>8</sub>
2	3.82	2 <sup>1</sup> / <sub>32</sub>	2 <sup>5</sup> / <sub>8</sub>



750-3  
Bulkhead Fitting C x F – Cast

NOM. SIZE	APPROX. NET WT./LBS.	DIM. A INCHES	DIM. B INCHES
1/2	0.48	1 <sup>15</sup> / <sub>16</sub>	1
3/4	0.79	2 <sup>1</sup> / <sub>16</sub>	1 <sup>1</sup> / <sub>4</sub>
1	1.43	2 <sup>15</sup> / <sub>32</sub>	1 <sup>5</sup> / <sub>8</sub>



750-4  
Bulkhead Fitting C x M – Cast

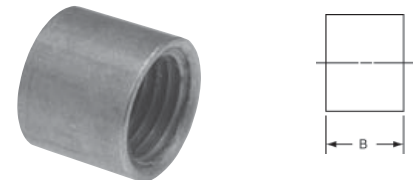
NOM. SIZE	APPROX. NET WT./LBS.	DIM. A INCHES	DIM. B INCHES
1/2	0.40	1 <sup>31</sup> / <sub>32</sub>	1
3/4	0.79	2 <sup>5</sup> / <sub>32</sub>	1 <sup>1</sup> / <sub>4</sub>

## BUSHINGS



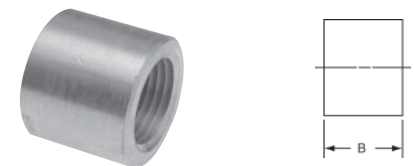
618  
Flush Bushing Ftg x C – Wrot

NOM. SIZE	APPROX. NET WT./LBS.	DIM. C INCHES
1/4 x 1/8	0.01	1 <sup>1</sup> / <sub>16</sub>
3/8 x 1/4	0.01	1 <sup>1</sup> / <sub>16</sub>
1/2 x 3/8	0.02	3 <sup>3</sup> / <sub>32</sub>
1/2 x 1/4	0.04	1 <sup>1</sup> / <sub>4</sub>
5/8 x 1/2	0.03	1 <sup>1</sup> / <sub>16</sub>
3/4 x 5/8	0.22	3 <sup>3</sup> / <sub>16</sub>
3/4 x 1/2	0.08	3 <sup>3</sup> / <sub>32</sub>
3/4 x 3/8	0.11	7 <sup>1</sup> / <sub>16</sub>
1 x 3/4	0.12	1 <sup>1</sup> / <sub>8</sub>
1 x 1/2	0.22	1 <sup>15</sup> / <sub>32</sub>
1 1/4 x 1	0.17	3 <sup>3</sup> / <sub>32</sub>
1 1/2 x 1 1/4	0.22	5 <sup>5</sup> / <sub>32</sub>
2 x 1 1/2	0.66	1 <sup>1</sup> / <sub>8</sub>



618-3  
Flush Bushing Ftg x F – Wrot

NOM. SIZE	APPROX. NET WT./LBS.	DIM. B INCHES
1/2 x 1/8	0.03	9 <sup>9</sup> / <sub>16</sub>
1/2 x 1/4	0.03	9 <sup>9</sup> / <sub>16</sub>



718-3  
Flush Bushing Ftg x F – Cast

NOM. SIZE	APPROX. NET WT./LBS.	DIM. B INCHES
3/4 x 3/8	0.06	1 <sup>31</sup> / <sub>32</sub>
1 x 1/2	0.13	3 <sup>1</sup> / <sub>32</sub>
1 1/4 x 3/4	0.18	1 <sup>1</sup> / <sub>32</sub>
1 1/2 x 1	0.25	1 <sup>5</sup> / <sub>32</sub>

Consult price sheet for Made to Order items and for minimum order quantities.