

FIG. 111

STRUT MOUNT CLAMP

Size Range: 1/4" tube diameter through 4" tube diameter.

Material: Carbon steel; 304 or 316 stainless.

Finish: Electro-zinc plated carbon; 304 or 316 mill finish.

Plastic Inserts: Polypropylene (color blue) up to 212° F.
Santoprene (color tan) up to 302° F.

Installation: After strut rail position has been established, position 2 strut rail nuts in channel where desired to accept plastic inserts. Place pipe or tube in clamp perpendicular to strut channel. Torque down on clamp bolts to lock assembly in place.

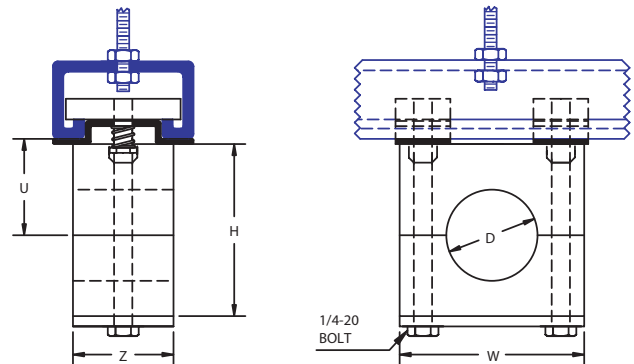
Ordering: Specify figure number, name tube or pipe size, group number, hardware material, finish, and plastic insert material. Order Strut separately.



PIPE & TUBE SUPPORT

TUBE OR PIPE SIZE	"D" INCHES	GROUP NO.	INCHES			
			W	H	Z	U
1/4 T	0.250	3	1.88	1.38	1.19	1.41
3/8 T	0.375					
1/2 T	0.500					
3/4 T	0.750					
1/2 P	0.840					
1 T	1.000					
1/4 T	0.250	6	3.34	2.63	1.19	2.04
3/8 T	0.375					
1/2 T	0.500					
5/8 T	0.625					
3/4 T	0.750					
1/2 P	0.840					
7/8 T	0.875					
1 T	1.000					
3/4 P	1.050					
1-1/4 T	1.250					
1 P	1.315					
1-1/2 T	1.500					
1-1/4 P	1.660					
1-1/2 P	1.900					
2 T	2.000					
2 T	2.000	7	5.00	4.38	1.19	2.91
2 P	2.375					
2-1/2 T	2.500					
2-1/2 P	2.875					
3 T	3.000					
3-1/2 T - 3P	3.500					
4 T	4.000	7A	5.77	4.80	1.19	3.14

TYPICAL ASSEMBLY



TYPICAL ASSEMBLY (MULTIPLE RUNS)

