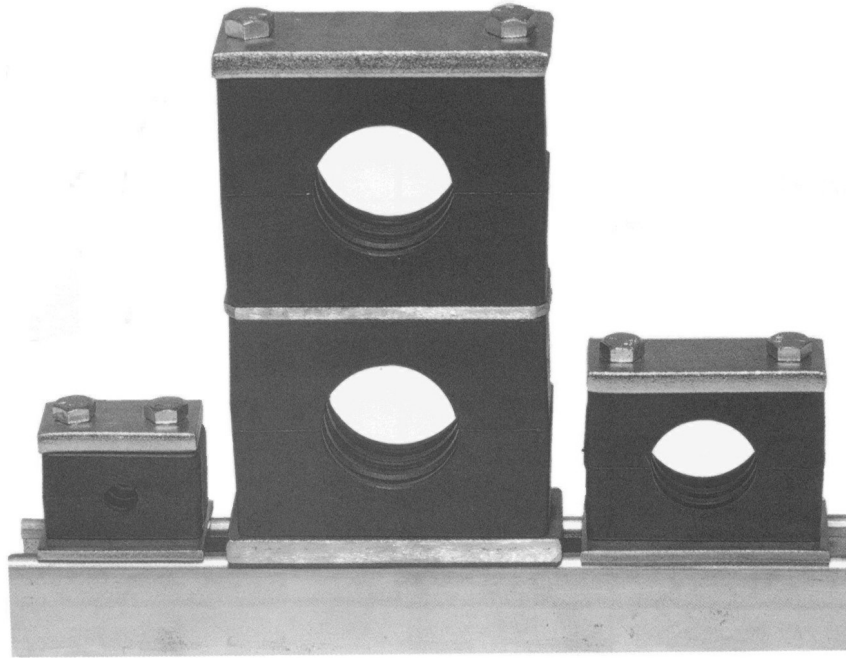
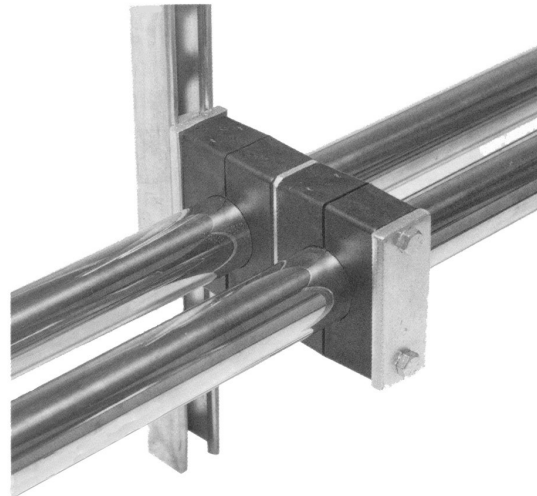
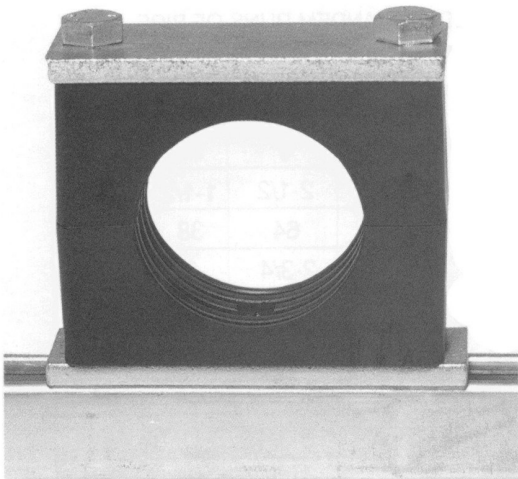


BEHRINGER®

STRUT MOUNT IS NOW A CINCH WITH BEHRINGER CLAMPS



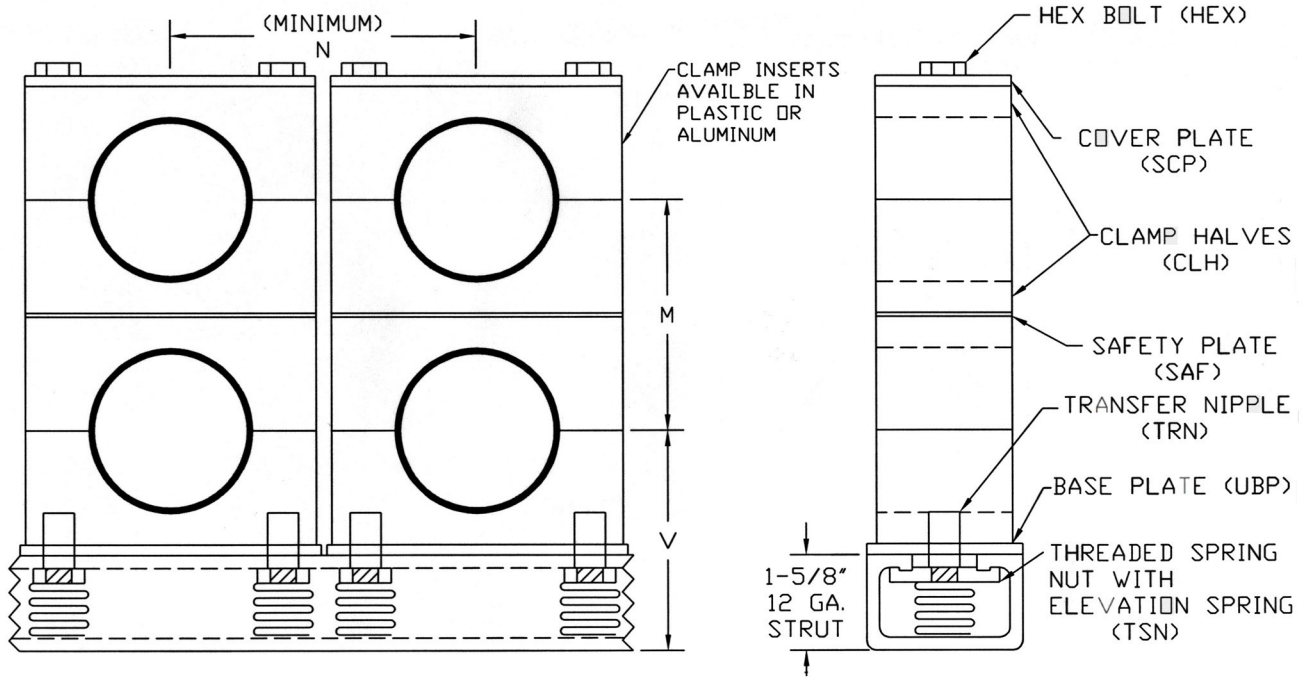
STRUT ALLOWS MAXIMUM EASE OF LINEAR ADJUSTMENT



**UP TO 3" PIPE CAN BE EASILY ACCOMMODATED IN
SINGLE MOUNT OR MULTIPLE STACK CONFIGURATIONS**

BEHRINGER CLAMPS ON STRUT CHANNEL

NECESSARY HEAVY SERIES COMPONENTS



- BEHRINGER CHANNEL/STRUT IS IDEAL FOR MULTIPLE TANDEM RUNS OF PIPE
- SEE BEHRINGER CATALOG/HEAVY SERIES FOR MORE DIMENSIONING
- ALL HARDWARE COMPONENTS AVAILABLE IN STEEL OR STAINLESS STEEL

GROUP #		DIAMETER RANGE (O.D.)	THREAD SIZE FOR CLAMP ASSEMBLY	V	M	N
H3	in.	.250-.675	3/8-16	2-1/2	1-1/2	2-3/8
	mm.	6-18	10	64	38	60
H4	in.	.250-1.050	3/8-16	2-3/4	2	2-7/8
	mm.	6-27	10	70	51	73
H5	in.	.250-1.660	3/8-16	3	2-1/2	3-1/2
	mm.	6-42	10	76	64	89
H6	in.	.250-2.750	7/16-14	3-3/4	3-11/16	4-3/4
	mm.	6-70	12	95	94	121
H7	in.	.250-3.500	5/8-11	4-3/8	4-15/16	6-1/2
	mm.	6-89	14	111	125	165

BEHRINGER®

BEHRINGER®

17 Ridge Road, Branchville, NJ 07826

Tel.: (973) 948-0226 • Fax (973) 948-2562

www.behringersystems.com • email: cserv@behringersystems.com