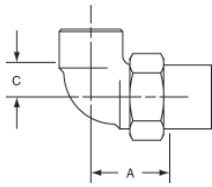
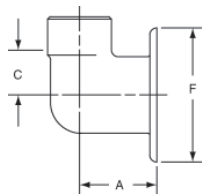


ELBOWS *continued*



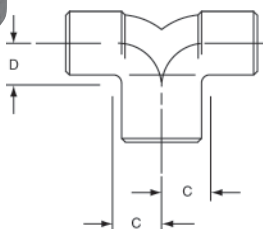
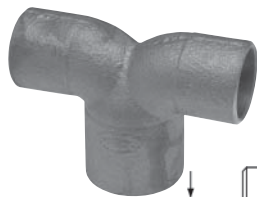
707-6
90° Union Elbow C x C – Cast

NOM. SIZE	APPROX. NET WT./LBS.	DIM. A INCHES	DIM. C INCHES
3/8	0.17	31/32	5/16
1/2	0.24	1	7/16
3/4	0.39	1 17/32	9/16
1	0.64	1 21/32	23/32
1 1/4	1.07	1 19/32	23/32



708
90° Flanged Sink Elbow
C x F – Cast

NOM. SIZE	APPROX. NET WT./LBS.	DIM. A INCHES	DIM. C INCHES	DIM. F INCHES
1/2	0.20	7/8	9/16	1 3/4

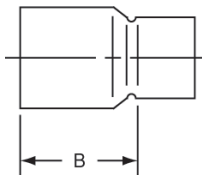


764
90° Double Elbow
C x C x C – Cast

NOM. SIZE	APPROX. NET WT./LBS.	DIM. C INCHES	DIM. D INCHES
1 x 3/4 x 3/4	0.33	3/4	21/32

Consult price sheet for Made to Order items and for minimum order quantities.

FITTING REDUCERS



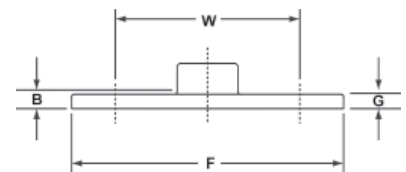
600-2
Fitting Reducer Ftg x C – Wrot

NOM. SIZE	APPROX. NET WT./LBS.	DIM. B INCHES
1/4 x 1/8	0.01	15/32
3/8 x 1/4	0.01	19/32
3/8 x 1/8	0.01	25/32
1/2 x 3/8	0.03	11/16
1/2 x 1/4	0.02	25/32
5/8 x 1/2	0.04	7/8
5/8 x 3/8	0.04	31/32
5/8 x 1/4	0.03	1 1/32
3/4 x 5/8	0.06	31/32
3/4 x 1/2	0.06	1 1/8
3/4 x 3/8	0.05	1 1/8
3/4 x 1/4	0.05	1 3/32
1 x 3/4	0.10	1 7/32
1 x 5/8	0.09	1 3/8
1 x 1/2	0.09	1 1/4
1 x 3/8	0.08	1 9/32
1 1/4 x 1	0.15	1 5/16
1 1/4 x 3/4	0.16	1 1/2
1 1/4 x 1/2	0.13	1 3/8
1 1/2 x 1 1/4	0.23	1 13/32
1 1/2 x 1	0.21	1 5/8
1 1/2 x 3/4	0.20	1 7/8
1 1/2 x 1/2	0.16	1 19/32
2 x 1 1/2	0.40	1 31/32
2 x 1 1/4	0.34	2 3/32
2 x 1	0.35	1 27/32
2 x 3/4	0.35	1 27/32
2 x 1/2	0.34	1 31/32
2 1/2 x 2	0.65	1 31/32
2 1/2 x 1 1/2	0.65	2 3/8
2 1/2 x 1 1/4	0.60	2 7/32
2 1/2 x 1	0.78	2 9/32
3 x 2 1/2	1.03	2 1/4
3 x 2	0.99	2 9/16
3 x 1 1/2	0.81	2 19/32
3 x 1 1/4	1.29	3 1/4
3 1/2 x 3	1.48	2 11/32

Continues...

NOM. SIZE	APPROX. NET WT./LBS.	DIM. B INCHES
4 x 3 1/2	2.09	2 5/8
4 x 3	2.00	3 1/32
4 x 2 1/2	1.56	3 1/32
4 x 2	1.76	3 13/32
5 x 4	3.30	3 9/16
5 x 3	2.97	4 1/16
5 x 2 1/2	3.30	4 11/32
5 x 2	2.88	4 11/16
6 x 5	5.56	4 3/16
6 x 4	5.09	4 9/16
6 x 3	4.67	5 1/16
6 x 2 1/2	4.47	5 11/32
6 x 2	4.51	5 19/32
8 x 6	12.33	5 15/32
8 x 5	10.35	5 15/16
8 x 4	11.10	6 7/16
8 x 3	10.63	6 15/16
8 x 2 1/2	11.41	7 3/16
8 x 2	10.86	7 7/16

FLANGES – CLASS 125



741
Companion Flange C – Cast

NOM. SIZE	APPROX. NET WT./LBS.	DIM. B INCHES	DIM. F INCHES	DIM. G INCHES	DIM. W INCHES
1/2	0.55	1/8	3 1/2	3/16	2 3/8
3/4	0.71	1/8	3 7/8	3/16	2 3/4
1	1.26	1/8	4 1/4	1/4	3 1/8
1 1/4	1.42	1/8	4 5/8	1/4	3 1/2
1 1/2	1.82	1/8	5	5/16	3 7/8
2	2.76	1/8	6	3/8	4 3/4
2 1/2	4.29	1/8	7	3/8	5 1/2
3	5.26	1/8	7 1/2	7/16	6
4	7.60	1/8	9	7/16	7 1/2
5	9.04	1/8	10	7/16	8 1/2
6	12.68	1/8	11	1/2	9 1/2

NOTE: Dim. B = Tube Stop to Flange Face