

FIG. 292

BEAM CLAMP WITH WELDLESS EYE NUT

Material: Forged steel.

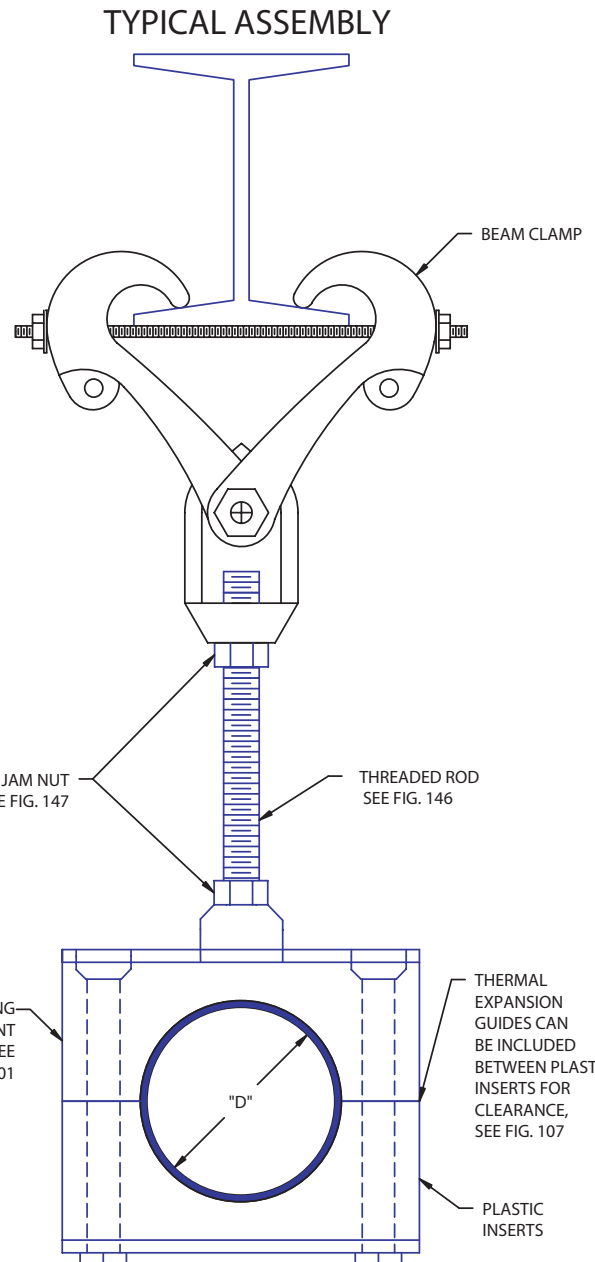
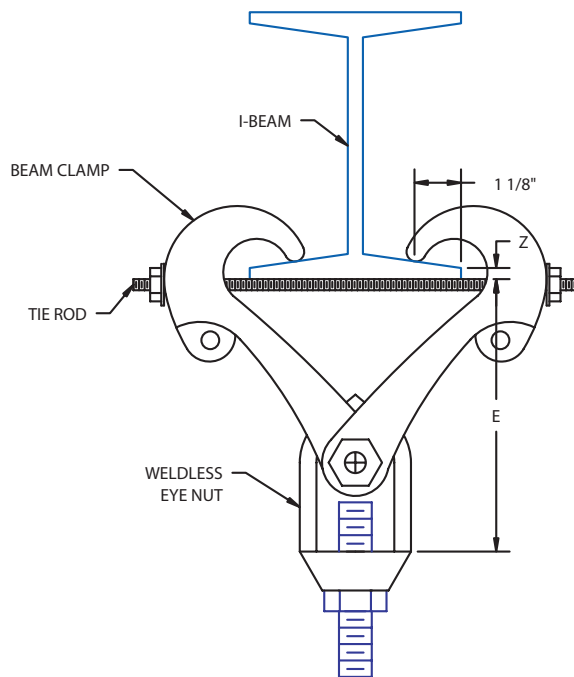
Finish: Plain or galvanized.

Service: For suspension of pipe clamps from beams with flange widths up to 10" and flange thickness to 1.031".

Installation: Fit jaws over edges of lower beam flange and tighten nuts on the rod to lock beam clamp in place.

- Features:**
- Weldless eye nut provides for horizontal pipe movement without binding.
 - Weldless eye nut is furnished tapped to any specified rod size up to the maximum rod size.
 - Tie rod assures a tight non-slip fit to the beam.

Ordering: Specify figure number; name; clamp size; rod size; and finish.



CLAMP SIZE NO.	MAX ROD SIZE	MAX LOAD LBS	WEIGHT LBS.	Z MAX. INCH	B INCH
1	3/4	3230	3.9	0.6	1-1/4
2	1	5900	9.2	0.6	1-11/16
4	1	5900	21.7	1.031	1-1/2

Note: Load capacity based on rod size shown

CLAMP SIZE NO.	WIDTH OF BEAM FLANGE (in) "E" (in)							
	3	4	5	6	7	8	9	10
1	4-1/2	4-5/6	4-1/6	3-5/8	2-7/8	-	-	-
2	-	4-3/4	4-7/16	4-1/16	3-3/8	-	-	-
4	-	6-13/16	6-5/8	6-3/8	5-7/8	5-7/8	5-3/8	4-13/16

Consult factory or your local distributor for larger beam sizes.

BEAM CLAMP