

**FIG. 150**

**SANITARY GASKETS**

**Size Range:** 1/2" through 6".

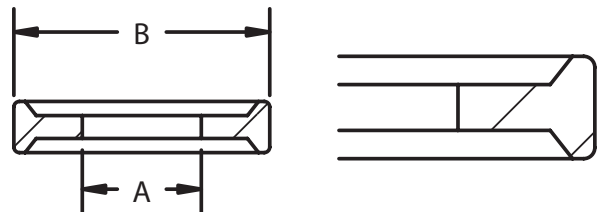
**Material:** Buna-n, Silicone, Teflon, Viton, EPDM and Tufsteel.

**Service:** Used in sealing connection of sanitary tube and fittings.

**Ordering:** Specify figure number, name, tube size and material.



TUBE SIZE	Ø "A"	"B"
.25	.2"	0.172
0.50	0.43"	0.172
0.75	0.63"	0.172



TUBE SIZE	A	B
1	0.900	1.984"
1.50	1.400	1.984"
2.00	1.900	2.515"
2.5	2.400	3.05"
3	2.900	3.579"
4	3.869	4.682"
6	5.782	6.57"

