

FIG. 260

ADJUSTABLE CLEVIS HANGER

Size Range: Pipe sizes 1/2" through 30".

Material: Carbon steel.

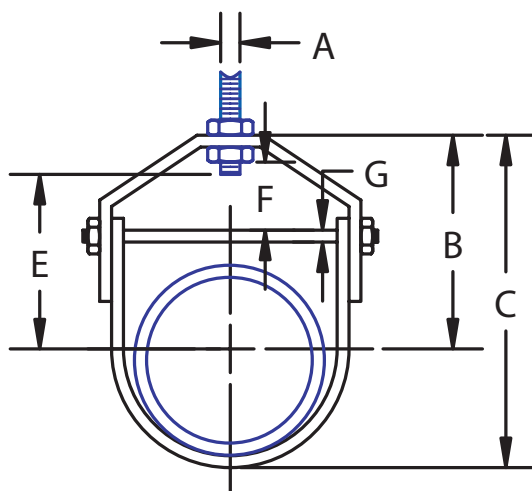
Finish: Plain or galvanized (also available plastic or epoxy coated).

Service: Recommended for the suspension of "stationary" pipe lines.

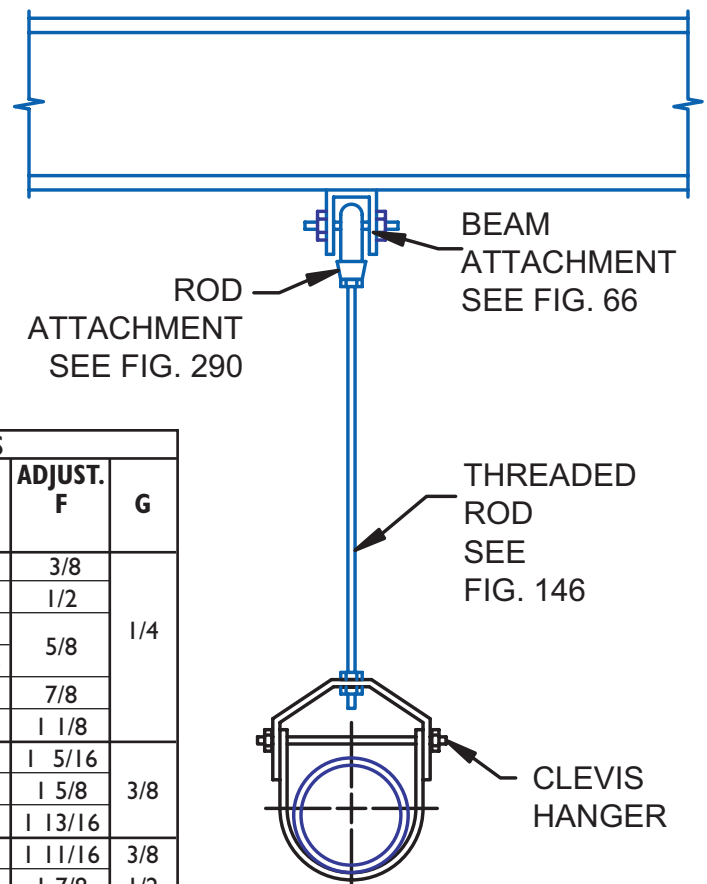
Installation: Hanger load nut above clevis must be tightened securely to assure proper hanger performance.

Adjustment: Vertical adjustment without moving pipe may be made from 3/8" to 5/8" varying with size of clevis. Tighten upper nut after adjustment.

Ordering: Specify figure number, name, pipe size and finish.



TYPICAL ASSEMBLY



PIPE SIZE	MAX LOAD LBS	SPAN Ft.	WEIGHT LBS	ROD SIZE A	INCHES							
					B	C	ROD TAKE OUT E	ADJUST. F	G			
1/2	730	7*	0.34	3/8	1 11/16	2 1/8	15/16	3/8	1/4			
3/4					2 1/16	2 9/16	1 3/8	1/2				
1					2 5/16	3	1 5/8	5/8				
1 1/4					2 3/8	3 1/4	1 11/16					
1 1/2					2 13/16	2 13/16	2 1/8	7/8				
2	1,350	9*	0.45	1/2	3 5/16	4 1/2	2 5/8	1 1/8	3/8			
2 1/2		11*	0.85		4 1/16	5 1/2	3 3/16	1 5/16				
3		12*	1.50		4 3/4	6 1/2	4 1/16	1 5/8				
3 1/2	1,430	13*	1.10	5/8	5 1/16	7 1/16	4 3/16	1 13/16	1/2			
4		14*	1.75		5 4/7	7 13/16	4 1/2	1 11/16				
5		16*	1.82		6 1/5	8 15/16	5 1/16	1 7/8				
6	1,940	17*	3.60	3/4	7	10 1/4	5 3/4	1 11/16	1/2			
8					8 3/8	12 11/16	7 3/16	2	5/8			
10	3,600	22*	8.80	7/8	9 7/8	15 1/4	8 7/16	2 1/8	3/4			
12					11 9/16	17 15/16	10 1/8	2 13/16				
14	4,200	25*	12.40	1	12 9/16	19 9/16	10 11/16	2 11/16	0.88			
16					14	22	12	2 3/4				
18					15 15/16	24 15/16	13 15/16	3 13/16				
20	4,800	30*	40.33	1 1/4	17 9/16	27 9/16	15 3/16	3 7/8	1 1/4			
24					19 13/16	31 13/16	17 5/16					
24					32*	49.83	24 3/16			39 3/16	21 9/16	5 1/8
30					33*	70.00						

*"Span" represents the maximum recommended distance between hangers on a continuous and straight run of horizontal standard weight steel pipe filled with water. In all cases, verify that chosen location of hangers does not subject hangers to a load greater than the maximum recommended load shown.