

# HANGER RODS



**FIG. 146**

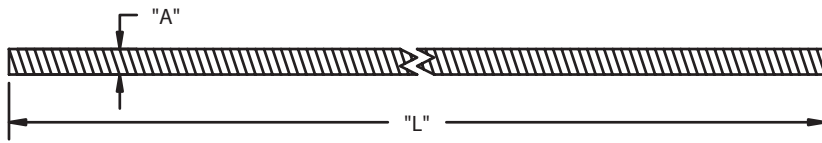
# CONTINUOUS THREADED ROD

**Size Range:** 3/8" and 5/8" diameter.

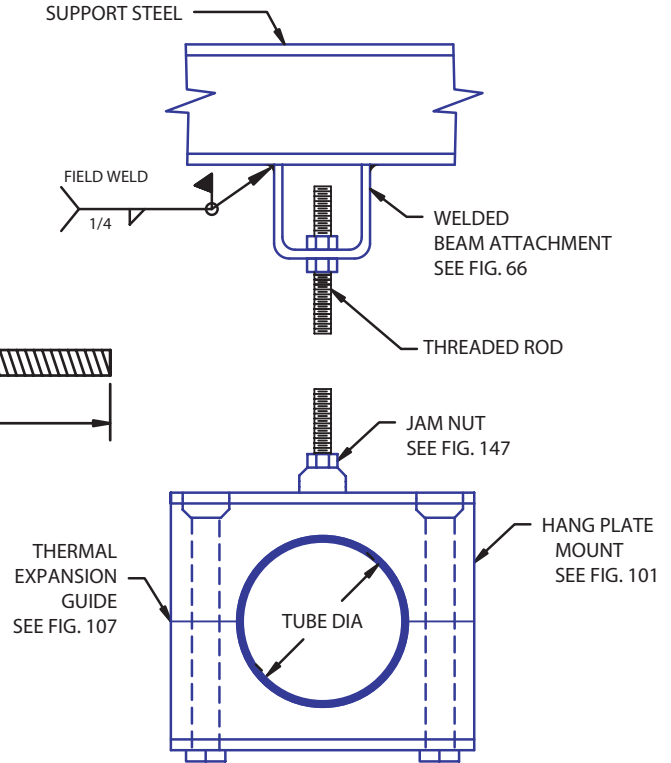
**Material:** Carbon Steel;  
304 or 316 Stainless.

**Finish:** Plain carbon; electro-zinc plated carbon; 304 or 316 stainless mill finish.

**Ordering:** Figure number; name; material; rod size; finish and rod length if other than standard 6'.



ROD SIZE "A"	MAX LOAD LBS.
3/8	730
5/8	2160



# HEXAGON NUT



**FIG. 147**

# JAM NUT

**Size Range:** 3/8" and 5/8" hexagon nuts

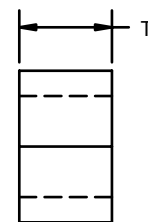
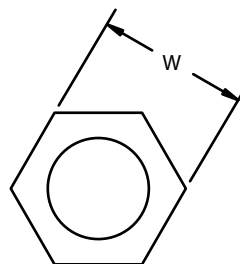
**Material:** Carbon Steel;  
304 or 316 Stainless

**Finish:** Plain carbon;  
electro-zinc plated carbon;  
304 or 316 stainless mill finish.

**Ordering:** Figure number; name; material; finish and thread size.



THREAD SIZE	"W" WIDTH (INCHES)	"T" THICKNESS (INCHES)
3/8 - 16	9/16	11/32
5/8 - 11	15/16	9/16



HANGER RODS

HEXAGON NUT