

FIG. 103

RAL-1 RAIL MOUNTING

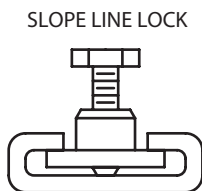
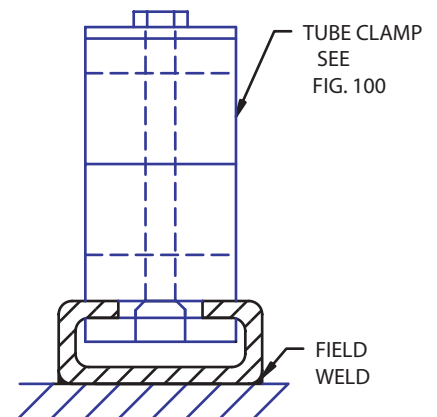
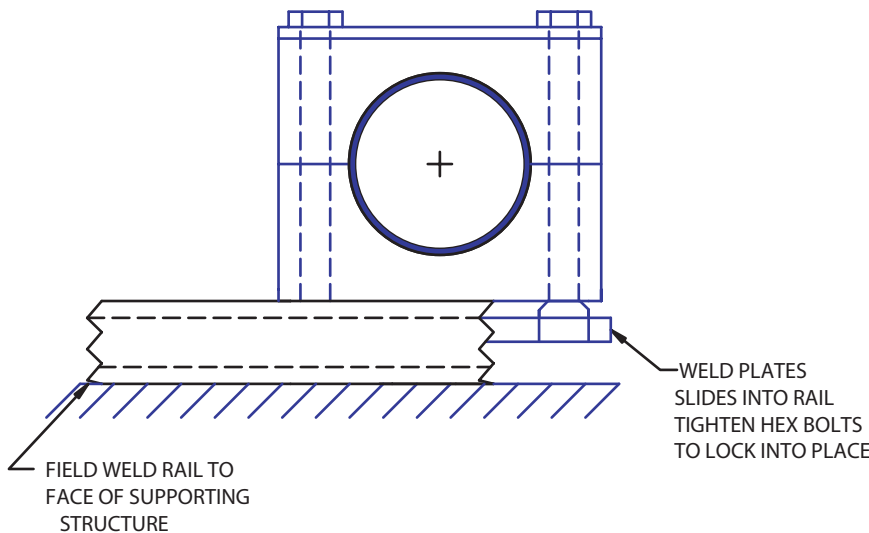
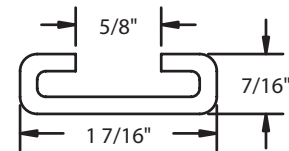
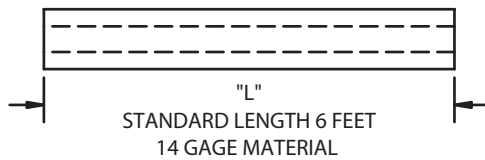
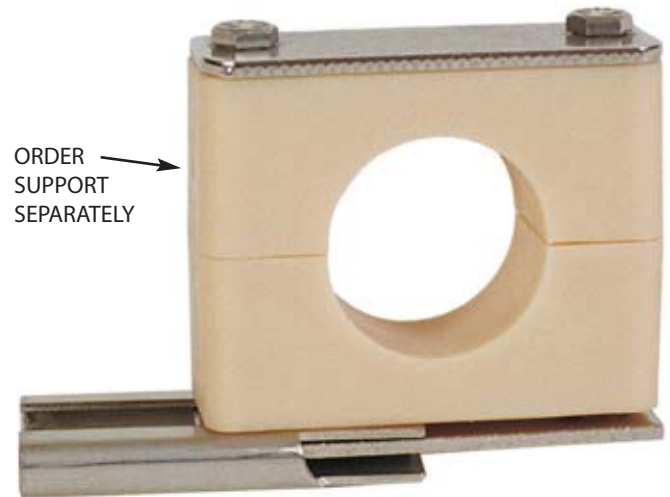
Size Range: Rail Accomodates Clamps from 1/4" through 4" tube

Material: Carbon Steel; 304 Stainless; 316 Stainless

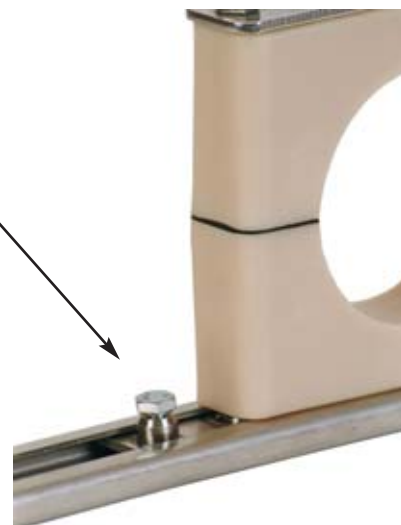
Finish: Plain carbon; electro-zinc plated carbon; 304 or 316 mill finish; 304 or 316 electro-polished

Installation: Weld Rail (RAL-1) to structure or supporting member. Slide clamp weld plate into rail, locate proper position and assemble clamp. Tightening hex bolts of clamp will lock clamp into position.

Ordering: Figure number, name, material, finish and length "L" if other than standard 6'.



THIS LOCK MECHANISM IS TO MAINTAIN WELD PLATE LOCATION IF CLAMP IS DISASSEMBLED CONSULT FACTORY OR YOUR LOCAL DISTRUBUTOR FOR DETAILS



RAIL FOR PIPE AND TUBE SUPPORT