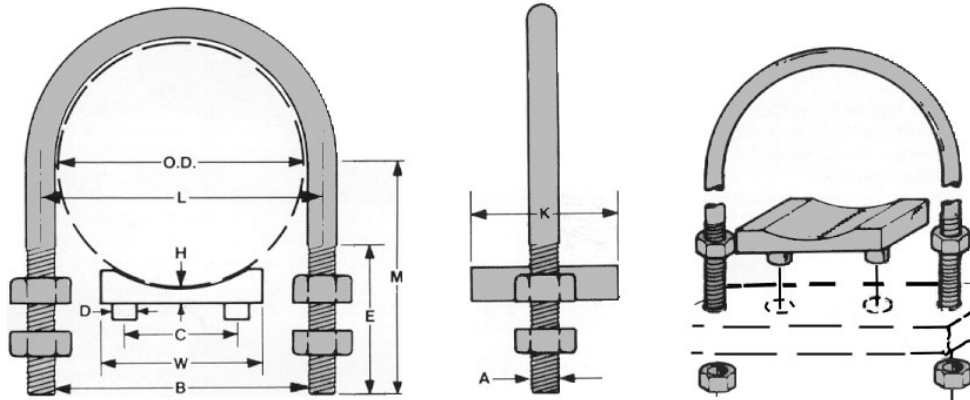


SHORT SADDLE SERIES

Range From 1 1/4"O.D. to 30"O.D.



SADDLE SERIES CLAMPS consist of a heavy duty plastic saddle, a "U"-bolt and (4) hex nuts. They will accommodate pipes from 1-1/4" to 30".

The Saddle Series allows for movement caused by vibration and temperature change. By eliminating metal to metal contact, these units prevent costly damage to pipe installations.

The Saddles are made of Polypropylene (PP) in black. Please refer to Standard Series for plastic properties. See flyer #LS9309 for saddle dimensions.

"U"-bolts are furnished in carbon steel. **Stainless steel hardware is available on request.**

Typical application areas for the Behringer Saddle Series Clamps are: Shipbuilding, tankers, refineries, chemical plants, or wherever large piping is used.

SADDLE SERIES DIMENSIONS IN INCHES

APPROX. DIM. IN M.M.

GROUP NO.	PIPE SADDLE				U-BOLT ORDER NO.	W	H	K	C	D	A	B	L	E	M	W	H	OD	L				
	NOM.	OUTSIDE DIA.	ORDER NO.	ORDER NO.																			
SU1	1 1/4	1.660	S10166	U1016	1 1/2	1/4	1	1	5/16	3/8	1 3/4	2 1/16	2	2 7/8	38	6	42	54					
	1 1/2	1.900	S10190	U1019									3/8						2 3/8	3	48	60	
	2	2.375	S10237	U1023									2 1/2						2 13/16	3 1/4	60	73	
SU2	3	3.500	S20350	U2035	3	5/16	2	1 9/16	9/16	1/2	3 5/8	4 1/16	3	4	76	8	89	105					
	4	4.500	S20450	U2045									4 5/8						5 1/16	4 1/2	114	130	
SU3	6	6.625	S30622	U3066	5 1/2	3/8	3	3 1/2	1	5/8	6 3/4	7 3/8	3 3/4	6 1/8	140	10	168	187					
	8	8.625	S30862	U3086									5/8						8 3/4	3 3/4	7 1/8	219	238
	10	10.750	S31075	U3107									3/4						10 7/8	4	8 3/8	273	295
SU4	12	12.750	S41275	U4127	8 1/2	3/8	3	5 7/8	1 1/8	7/8	12 7/8	13 3/4	4 1/4	9 5/8	216	10	324	349					
	14	14	S41400	U4140									7/8						14 1/8	4 1/4	10 1/4	356	381
	16	16	S41600	U4160									7/8						16 1/8	4 1/4	11 1/4	406	432
	18	18	S41800	U4180									1						18 1/8	4 3/4	12 5/8	457	486
SU5	20	20	S52000	U5200	14	1/2	4	10 1/2	1 1/8	1	20 1/8	21 1/8	4 3/4	13 5/8	356	12	508	537					
	24	24	S52400	U5240									15 5/8						609	638			
	30	30	S53000	U5300									18 5/8						762	791			

Long Saddle supports also available. See flyer #LS9309

All saddles can be supplied without nipples (Group No. SU5 only supplied without nipples).

BEHRINGER® CORP SUPPORTS MECHANICAL PROPERTIES

	WELD, COVER AND SAFETY PLATES	PRESSURE FUSED WELD NUT	FASTENERS GRADE 5
MATERIAL	Carbon Steel A36	Carbon Steel AISI C11L41	Carbon Steel 1035
YIELD STRENGTH	36,000 psi	61,000 psi	92,000 psi
TENSILE STRENGTH	58-80,000 psi	91,000 psi	120,000 psi

BEHRINGER®

©COPYRIGHT 2002 REVISED BY BEHRINGER CORPORATION No. 9706 Printed in U.S.A.

See Behringer® Easy Order Guide for prices and order numbers