

FIG. 108

HANG STACK-OF-2-CLAMP

Size Range: Any combination of sizes 1/4" through 2" diameter.

Hardware

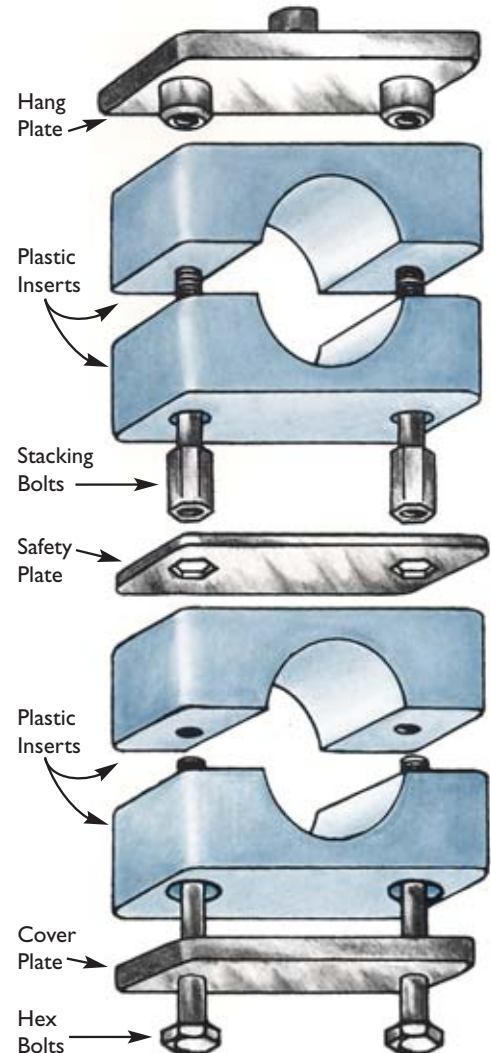
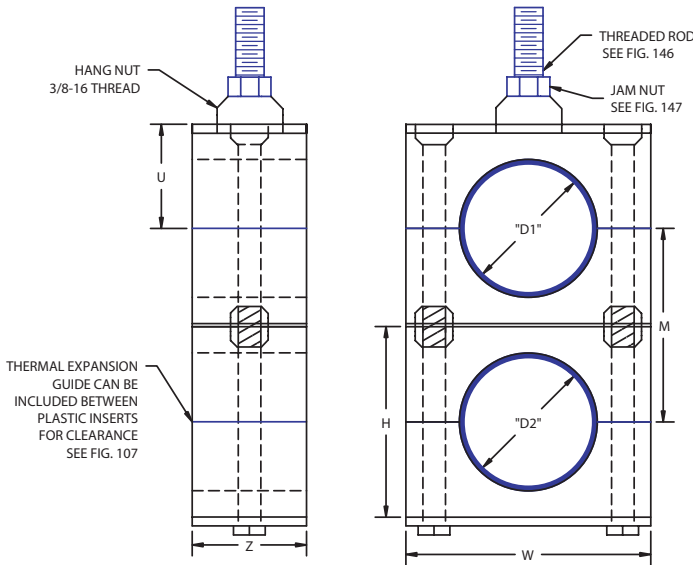
Material: Carbon Steel; 304 Stainless; 316 Stainless.

Finish: Plain carbon; electro-zinc plated carbon; 304 or 316 mill finish; 304 or 316 electro-polished.

Plastic Inserts: Polypropylene (color blue) up to 212° F. Santoprene (color tan) up to 302° F.

Installation: Assemble all components as shown and attach hang nut to threaded rod with jam nut.

Ordering: Specify figure number, name, any two combination of sizes from 1/4" through 2" diameter, hardware material, finish and plastic insert material.



TUBE OR PIPE SIZE	"D1" + "D2"	"D" INCHES	GROUP NO.	INCHES						BOLT SIZE
				W	H	Z	U	L	M	
1/4 T	Choose any double combination of Tube or Pipe Sizes between 1/4T and 2T	.250	6	3.34	2.63	1.19	1.44	3.37	2.69	1/4 - 20
3/8 T		.375								
1/2 T		.500								
5/8 T		.625								
3/4 T		.750								
1/2 P		.840								
7/8 T		.875								
1 T		1.000								
3/4 P		1.050								
1-1/4 T		1.250								
1 P		1.315								
1-1/2 T		1.500								
1-1/4 P		1.660								
1-1/2 P		1.900								
2 T		2.000								

Contact Behringer or your local distributor for other stack-of-2 diameter configurations.