

# CleanStar® C60/C67 HPW PFA T-body 1" x 1"

Ultra pure PFA diaphragm valve 2/2 way, manually operated (C67) and pneumatically operated (C60) with zero deadleg PFA T-valve body

- T-body design minimizes “dead legs” reducing “chemical holdout” and rinse times.
- Eliminates the need for tee fittings, reducing associated pressure loss and overall cost of installation.
- Requires less mounting space, ideal for compact distribution boxes

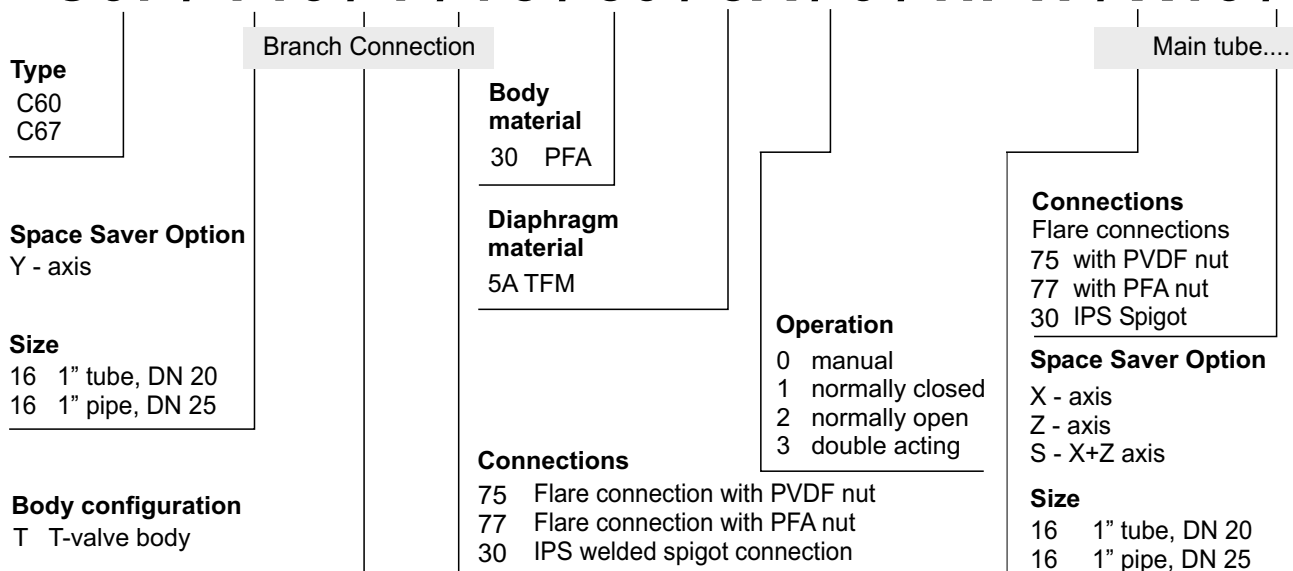
Technical details refer to technical data sheet C60/C67 with straight through body.

Control Pressure (PSI)		Connection
Control Function		
1	2 + 3	
100	60	G 1/8"

Main tube			Branch/Valve				Cv-Value (gal/min)	
Ref. no.	Size	Connections	Ref. no.	Ref. no.	Size	Connections	Ref. no.	
16	1" tube	Flare-connection	75 a. 77	16	1" tube	Flare-connection	75 a. 77	9.6
16	1" pipe	IPS Welded Spigot-Connection	30	16	1" pipe	IPS Welded Spigot-Connection	30	11.5

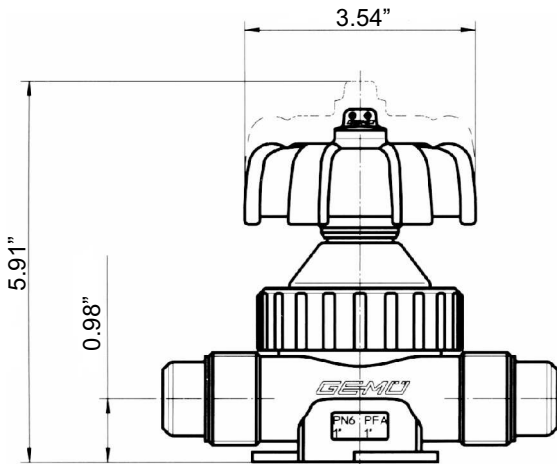
## How to order

# C67 / Y16 / T / 75 / 30 / 5A / 0 / HPW / X16 / 75

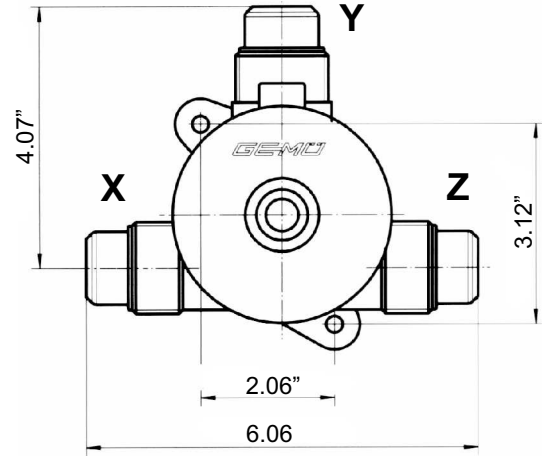
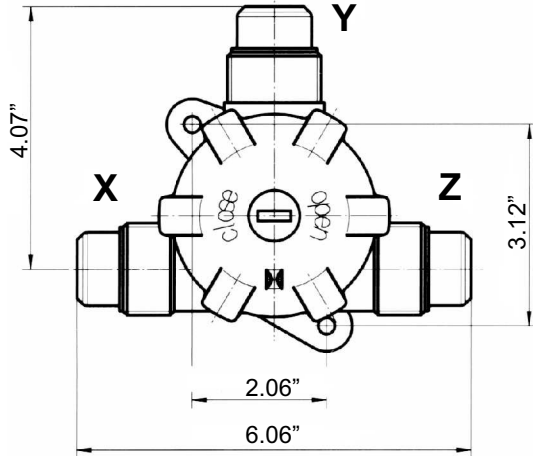
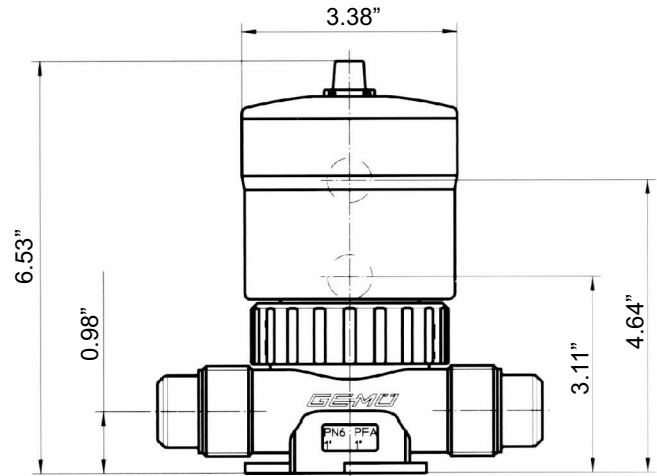


# Dimensions

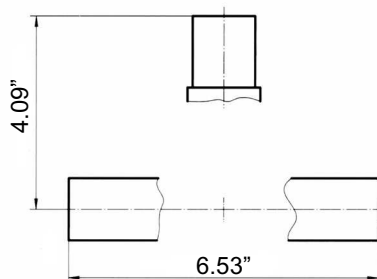
**C 67**



**C 60**



**IPS welded spigot connections (on request)**



**Space saver (pos. X, Y or Z)**

