

**FIG. 290: RIGHT HAND THREAD
FIG. 290L: LEFT HAND THREAD**

WELDLESS EYE NUT

Size Range: For use with 3/8" through 1" diameter rod size "A".

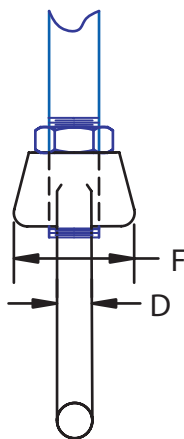
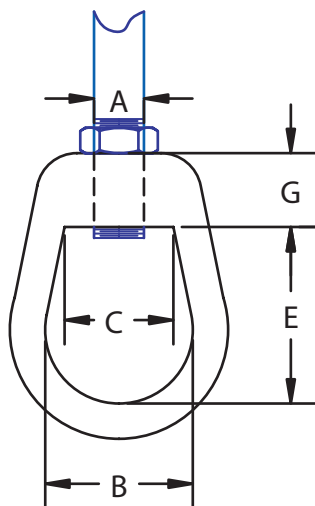
Material: Forged steel.

Finish: Plain or galvanized.

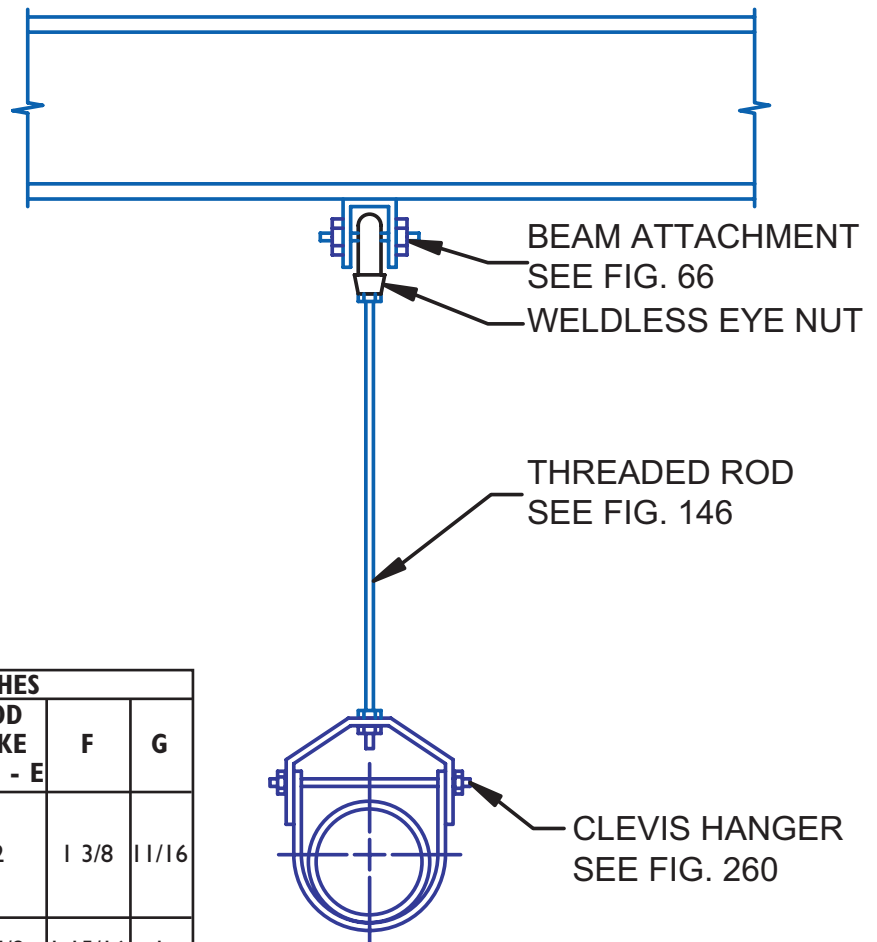
Service: For use on high temperature piping installations.

- Features:**
- Supports loads equal to the full limitation of the hanger rod.
 - Provides flexible connection when used with straight thread rod.

Ordering: Specify figure number, name, rod size "A" and finish.



TYPICAL ASSEMBLY



ROD SIZE A INCHES	EYE NUT NUMBER	MAX LOAD LBS.	INCHES					
			B	C	D	ROD TAKE OUT - E	F	G
3/8	1	572	1 1/2	1 3/16	1/2	2	1 3/8	1 1/16
1/2		1,057						
5/8		1,692						
3/4		2,530						
7/8	2	3,508	2	1 11/16	3/4	2 5/8	1 15/16	1
1		4,620						