

**FIG. 230**

**TURN BUCKLE**

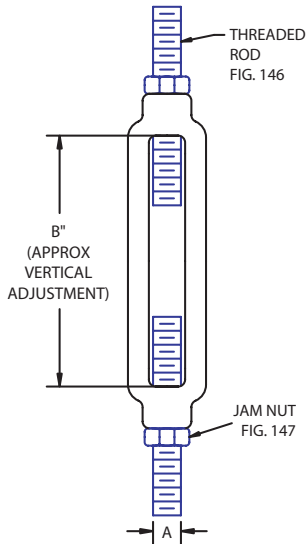
**Size Range:** 3/8" and 5/8" diameter.

**Material:** Forged Steel.

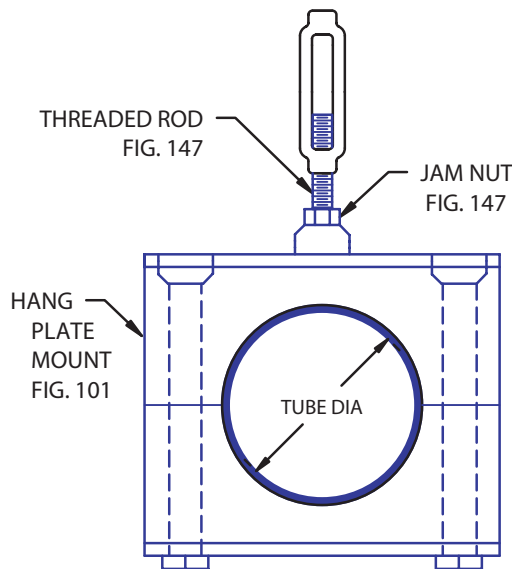
**Finish:** Plain or plated.

**Service:** Provides 6" or 12" verticle adjustment for threaded rod.

**Ordering:** Specify figure number, name, rod size and finish.



**TYPICAL ASSEMBLY**



ROD SIZE "A"	LBS. MAX LOAD	"B"
3/8	730	6"
5/8	2160	12"

\* Special rod sizes available upon request

**THREADED ROD ATTACHMENT**

**HANGER RODS**

**FIG. 140**

**ROD WITH ONE OR BOTH ENDS THREADED**

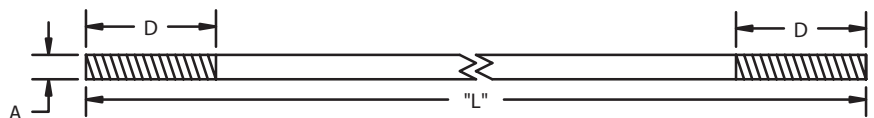
**Size Range:** 3/8" or 5/8" diameter.

**Material:** Carbon; 304 Stainless; 316 Stainless.

**Finish:** Carbon steel (plain or galvanized).

**Service:** Used in hygenic areas to hang Behringer clamps to eliminate crevices where dust or debris can accumulate.

**Ordering:** Specify rod size, figure number, name, material (finish for carbon material) and overall rod length "L". Specify thread length if other than standard.



ROD SIZE "A"	LBS. MAX LOAD	STANDARD ROD THREAD LENGTH "D"
3/8	730	2 3/4"
5/8	2160	2 3/4"

Note: Standard thread length "D" is determined to allow thread access into a hang nut and jam nut only and not allow for any threads to be exposed in a clamp hang assembly. This is critical in hygenic areas for cleanliness.

**HANGER RODS**