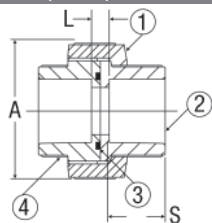


## Unions

Chemtrol  
Fig. No.

### 5133 FKM (Viton)/5133E (EPDM) Socket Union (S x S)

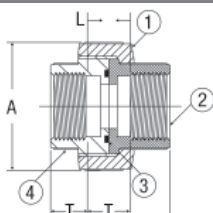


Nominal Size	FKM Part No.	EPDM Part No.	Ctn. Qty.	Approx. Lbs./Ea.	Dim. A	Dim. L	Dim. S*
1/4	1897-002	1897E002	5	0.10	1.70	0.41	0.64
1/2	1897-005	1897E005	10	0.17	1.99	0.43	0.89
3/4	1897-007	1897E007	10	0.30	2.43	0.44	1.02
1	1897-010	1897E010	5	0.43	2.82	0.43	1.14
1 1/4	1897-012	1897E012	5	0.94	4.07	0.79	1.27
1 1/2	1897-015	1897E015	5	1.01	4.07	0.81	1.39
2	1897-020	1897E020	5	1.98	5.24	0.80	1.52
3	1897-030	1897E030	5	3.77	7.15	0.94	1.91

Socket x Thread is available on request in all sizes except 2 1/2". The 2 1/2" Socket Union is available as a fabrication from the 3" size Bushed down.

\* Socket Depth

### 5133-3-3 FKM (Viton)/5133E-3-3 (EPDM) Threaded Union (FPT x FPT)



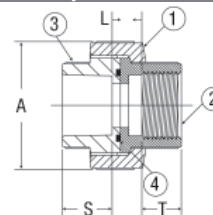
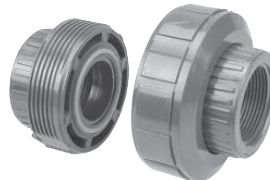
Nominal Size	FKM Part No.	EPDM Part No.	Ctn. Qty.	Approx. Lbs./Ea.	Dim. A	Dim. L	Dim. S*
1/4	1898-002	1898E002	5	0.10	1.69	1.07	0.31
1/2	1898-005	1898E005	5	0.17	1.99	1.30	0.43
3/4	1898-007	1898E007	5	0.30	2.43	1.37	0.45
1	1898-010	1898E010	5	0.44	2.82	1.51	0.53
1 1/4	1898-012	1898E012	5	0.97	4.07	2.01	0.55
1 1/2	1898-015	1898E015	5	1.00	4.07	2.16	0.57
2	1898-020	1898E020	5	1.98	5.24	2.36	0.57
3	1898-030	1898E030	5	3.99	7.15	2.685	0.95

Socket x Thread is available on request in all sizes except 2 1/2". The 2 1/2" Socket Union is available as a fabrication from the 3" size Bushed down.

\* Thread Joint Engagement

Chemtrol  
Fig. No.

### 5133-3 FKM (Viton)/5133E-3 (EPDM) Female Adapter Union (S x FPT)



Nominal Size	FKM Part No.	EPDM Part No.	Ctn. Qty.	Approx. Lbs./Ea.	Dim. A	Dim. L	Dim. S*	Dim. T†
1/2	1899-005	1899E005	10/5	0.163	1.99	0.84	0.89	0.43
3/4	1899-007	1899E007	10	0.282	2.43	0.81	1.02	0.45
1	1899-010	1899E010	10	0.411	2.82	0.90	1.14	0.53
1 1/4	1899-012	1899E012	10	0.943	4.07	1.29	1.27	0.55
1 1/2	1899-015	1899E015	10	0.967	4.07	1.32	1.39	0.55
2	1899-020	1899E020	5	1.880	5.24	1.41	1.52	0.57
3	1899-030	1899E030	5	4.100	7.15	1.90	1.91	0.95

The 2 1/2" Socket x Thread Union is available as a fabrication from the 3" size Bushed down.

\* Socket Depth

† Thread Joint Engagement

## Transition Unions

### Materials of Construction

Item	Description	Material
1	Union Nut	CPVC
2	End Connector	Brass/SS
3	O-Ring	Viton/EPDM
4	Union Tailpiece	CPVC

- TCBR-3 Brass End Connector (FPT)
- TCBR-4 Brass End Connector (MPT)
- TCSS-3 Stainless Steel End Connector (FPT)
- TCSS-4 Stainless Steel End Connector (MPT)

Refer to page 13 for purchase and assembly instructions of Transition Unions and for part number, size, carton quantity, weights, and dimensions of Metal End Connectors.