

Models: 792FD, 794FD, 796FD

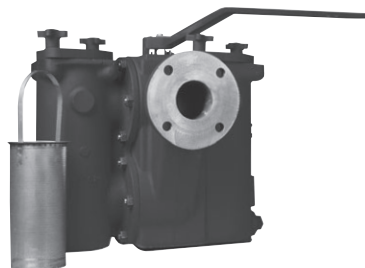
Ball-Plex™ Carbon Steel Flanged End Duplex Strainer Sizes: 1" - 6" (25 - 150mm)

Pressure/Temperature - Non-Shock

Model	Material	Rating
792FD	Carbon Steel	285psi @ -20 to 100°F
		19.65 bar @ 37.78°C
		260psi @ 200°F
794FD	Carbon Steel	740psi @ -20 to 100°F
		51.02 bar @ 37.78°C
		680psi @ 200°F
796FD	Carbon Steel	46.88 bar @ 93.33°C
		740psi @ -20 to 100°F
		51.02 bar @ 37.78°C
		680psi @ 200°F
		46.88 bar @ 93.33°C

Max. temp. can be limited by gasket and seat material. Consult factory.

792FD	Class 150
794FD	Class 300
*796FD	Class 600



792

*CAUTION:

The 796FD is a Class 300 Strainer drilled for Class 600 Flanges.

Strainers provide economical protection for costly pumps, meters, valves, and other similar mechanical equipment by straining foreign matter from the connected piping system. Installation of a strainer before mechanical equipment can ensure trouble free service and avoid costly shutdowns for repair or replacement of equipment damaged by foreign matter. The size of the perforation or mesh in the basket screen will determine the smallest particles captured. See the Strainer Information section of the Mueller Steam Specialty Engineering binder for detailed information including sizes and materials available.

Typical Service

- Duplex Strainers are designed for use in fluid handling systems where the flow cannot be shut down for basket cleaning
- Typical services include cooling water, compressors, condensers, fire lines, fuel lines, lubrication systems, salt and fresh water systems, chemical process systems, pump suction service, and more
- Consider strainer body and screen material as well as gasket and seat materials for suitability for particular service

Features

- Ball-Plex™ Duplex Strainers use 3-way balls as the diverter valves
- Balls are 316SS for corrosion resistance, strength, and resistance to build-up of solids on the balls' surfaces
- PTFE seats provide bubble-tight sealing, superior to metal seats in other designs. This eliminates potentially dangerous leakage into the chamber being cleaned
- Two part body casting allows true and easy in-line service
- After removal of the cover and basket, all working parts are easily accessible even with the unit in line
- The handle covers the pressurized chamber. This prevents accidental opening of the pressurized chamber, and allows easy access to the chamber to be cleaned

Baskets

Large open area ratios ensure minimum pressure drop across the unit.

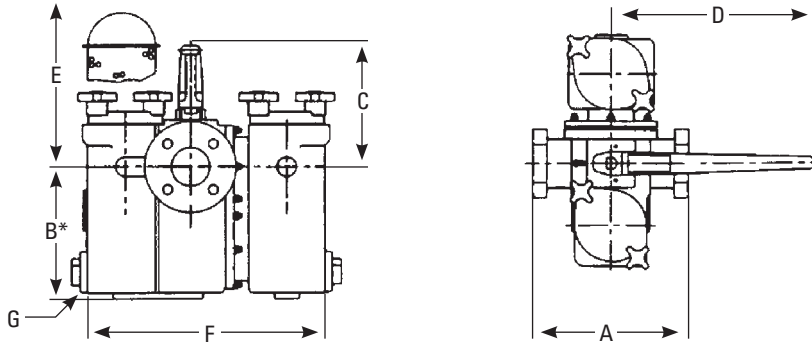
See Technical Data section of the Mueller Steam Specialty Engineering binder for Pressure Drop Charts.

MODEL	SIZES	STANDARD (WATER)	
		MATERIAL	OPENING
792FD, 794FD, 796FD	1" - 4"	304SS	.062 perf
	5", 6"	304SS	.125 perf

Material

	792FD, 794FD, 796FD
Body	Carbon Steel, ASTM A216-WCB
Cover	Carbon Steel
Seats	PTFE
O-Rings	Buna-N

Dimensions and Weights



* "B" dimension includes the floor supports when applicable.

Models 792FD, 794FD, 796FD

SIZE		DIMENSIONS										WEIGHT									
		A		B		C		D		E Screen Removal		F		G (NPT)		792FD		794FD			
in.	mm	in.	mm	in.	mm	in.	mm	in.	mm	in.	mm	in.	mm	in.	mm	lbs.	kgs.	lbs.	kgs.		
1	25	6 ⁷ / ₈	175	7 ¹ / ₈	181	4 ¹⁵ / ₁₆	125	4 ⁵ / ₈	118	10	254	7 ³ / ₄	197	10 ⁵ / ₁₆	259	3/4	20	39	17.6	39	17.6
1 ¹ / ₄	32	9 ³ / ₈	238	9 ³ / ₈	238	6 ³ / ₄	171	4 ³ / ₈	111	10	254	10 ³ / ₈	264	12 ³ / ₄	324	1 ¹ / ₄	32	72	32.6	72	32.6
1 ¹ / ₂	40	9 ³ / ₈	238	9 ³ / ₈	238	6 ³ / ₄	171	4 ³ / ₈	111	10	254	10 ³ / ₈	264	12 ³ / ₄	324	1 ¹ / ₄	32	72	32.6	73	33.1
2	50	10 ⁵ / ₈	270	10 ⁵ / ₈	270	8 ³ / ₁₆	208	7 ¹ / ₈	181	20	508	12 ⁵ / ₈	321	16 ³ / ₈	416	1 ¹ / ₂	40	122	55.3	121	54.8
2 ¹ / ₂	65	13 ¹ / ₂	343	14 ¹ / ₄	362	12	305	8 ¹ / ₁₆	205	20	508	17 ²¹ / ₃₂	448	20 ³ / ₈	518	1 ¹ / ₂	40	218	98.8	240	108.8
3	80	13 ¹ / ₂	343	14 ¹ / ₄	362	12	305	8 ¹ / ₁₆	205	20	508	17 ²¹ / ₃₂	448	20 ³ / ₈	518	1 ¹ / ₂	40	225	102	240	108.8
4 ^{††}	100	16	406	16 ¹ / ₂	419	16 ¹³ / ₁₆	427	15 ¹ / ₂	394	14+	356	23 ¹ / ₂	597	24 ¹ / ₂	622	1 ¹ / ₂	40	424	192.2	449	203.6
5 ^{††}	125	22	559	22 ⁷ / ₈	581	18 ⁵ / ₈	473	17 ¹ / ₄	438	14+	356	25 ¹ / ₁₆	653	26 ¹ / ₄	667	1 ¹ / ₂	40	780	353.7	790	358.2
6 ^{††}	150	22	559	22 ⁷ / ₈	581	18 ⁵ / ₈	473	17 ¹ / ₄	438	14+	356	25 ¹ / ₁₆	653	26 ¹ / ₄	667	1 ¹ / ₂	40	780	353.7	790	358.2

Apply for Certified Drawings

+4", +5", and +6" units are standard with gear operator. The handwheel dimension is 10".

†† = 4", 5" and 6" units are standard with floor supports. Dimension "B" reflects this standard in those sizes.

Mueller Steam Specialty product specifications in U.S. customary units and metric are approximate and are provided for reference only. For precise measurements, please contact Mueller Steam Specialty Technical Service. Mueller Steam Specialty reserves the right to change or modify product design, construction, specifications, or materials without prior notice and without incurring any obligation to make such changes and modifications on Mueller Steam Specialty products previously or subsequently sold.



A Division of Watts Water Technologies, Inc.

USA: 1491 NC Hwy 20 West St. Pauls, NC 28384; www.muellersteam.com

Tel: 910-865-8241 Fax: 910-865-6220

Toll Free Phone 1-800-334-6259 Toll Free Fax: 1-800-421-6772