

Chemtrol  
Fig. No.

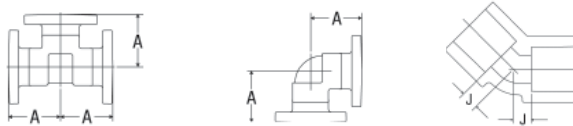
## NR 51 Flange Gaskets, for Class 150 Flanges



Note: These gaskets are 1/8" thick, full face neoprene, 70 durometer.

Nominal Size	Part No.	Approx. Lbs./Ea.
1/2	Use Figure No. & Nom. Size	0.11
3/4		0.12
1		0.13
1 1/4		0.14
1 1/2		0.15
2		0.20
2 1/2		0.25
3		0.28
4		0.30
6		0.40
8		0.50
10		0.55
12	0.60	

## Flanged Fittings\*— Fabricated from Molded Components

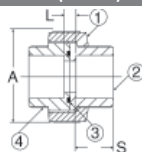


Nominal Size	Fig. No. 4511-12 Flanged Tee		Fig. No. 4507-12 Flanged 90° ELL		Fig. No. 4506-12 Flanged 45° ELL	
	Approx. Lbs./Ea.	Dim. A	Approx. Lbs./Ea.	Dim. A	Approx. Lbs./Ea.	Dim. B
1	1.71	3 3/32	1.19	3 3/32	1.12	2 23/32
1 1/4	2.39	3 19/32	1.60	3 19/32	1.60	3 3/32
1 1/2	3.24	3 31/32	2.06	3 31/32	2.09	3 13/32
2	4.86	4 15/32	3.28	4 15/32	3.16	3 27/32
2 1/2	7.82	5 7/32	5.30	5 7/32	5.08	4 13/32
3	10.67	5 13/32	7.32	5 13/32	6.92	4 25/32
4	16.64	7 3/32	11.60	7 3/32	10.79	5 25/32
6	32.74	9 25/32	22.65	9 25/32	20.84	8 1/2
8	65.79	13 31/32	45.40	13 31/32	42.50	11 5/8

\*Flanged fittings are produced by solvent cementing socket flanges to socket fittings with short plain end pipe nipples. They may be ordered as factory fabrications or may be assembled in the field.

## Unions

### 4533 FKM (Viton)/4533E (EPDM) Socket Union (S x S)



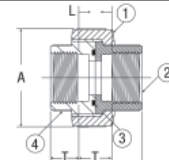
Nominal Size	FKM Part No.	EPDM Part No.	Ctn. Qty.	Approx. Lbs./Ea.	Dim. A	Dim. L	Dim. S*	Dim. T†
1/4	897-002	897E002	10	0.07	1.70	0.40	0.64	
1/2	897-005	897E005	10	0.16	2.00	0.43	0.89	
3/4	897-007	897E007	10	0.27	2.44	0.45	1.01	
1	897-010	897E010	10	0.40	2.83	0.43	1.14	
1 1/4	897-012	897E012	5	0.87	4.08	0.79	1.26	
1 1/2	897-015	897E015	10	0.93	4.08	0.80	1.39	
2	897-020	897E020	10	1.83	5.26	0.80	1.51	
3	897-030	897E030	5	3.47	7.17	0.90	1.90	

The 2 1/2" Socket Union is available as a fabrication from the 3" size Bushed down.

\* Socket Depth

Chemtrol  
Fig. No.

### 4533-3-3 FKM (Viton)/4533E-3-3 (EPDM) Threaded Union (FPT x FPT)

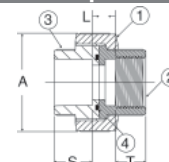
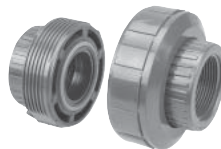


Nominal Size	FKM Part No.	EPDM Part No.	Ctn. Qty.	Approx. Lbs./Ea.	Dim. A	Dim. L	Dim. T*
1/4	898-002	898E002	10	0.11	1.70	1.07	0.31
1/2	898-005	898E005	10	0.16	2.00	1.30	0.43
3/4	898-007	898E007	10	0.28	2.44	1.38	0.45
1	898-010	898E010	10	0.41	2.83	1.51	0.53
1 1/4	898-012	898E012	5	0.90	4.08	2.01	0.55
1 1/2	898-015	898E015	10	0.92	4.08	2.16	0.55
2	898-020	898E020	10	1.82	5.26	2.36	0.57
3	898-030	898E030	5	3.47	7.17	2.88	0.95

The 2 1/2" Thread Union is available as a fabrication from the 3" size Bushed down.

\* Thread Joint Engagement

### 4533E-3 FKM (Viton)/4533E-3 (EPDM) Female Adapter Union (S x FPT)



Nominal Size	FKM Part No.	EPDM Part No.	Ctn. Qty.	Approx. Lbs./Ea.	Dim. A	Dim. L	Dim. S*	Dim. T†
1/2	899-005	899E005	10	0.16	2.00	0.84	0.89	0.43
3/4	899-007	899E007	10	0.26	2.44	0.82	1.02	0.45
1	899-010	899E010	10	0.38	2.83	0.90	1.14	0.53
1 1/4	899-012	899E012	10	0.89	4.08	1.29	1.27	0.55
1 1/2	899-015	899E015	10	0.91	4.08	1.32	1.39	0.55
2	899-020	899E020	5	1.81	5.26	1.41	1.51	0.57
3	899-030	899E030	5	3.86	7.17	1.93	1.91	0.95

The 2 1/2" Socket x Thread Union is available as a fabrication from the 3" size Bushed down.

\* Socket Depth

† Thread Joint Engagement