

FIG. 104

STACK-OF-2-CLAMP

Size Range: Any double combination of sizes 1/4" through 2" diameter.

Hardware

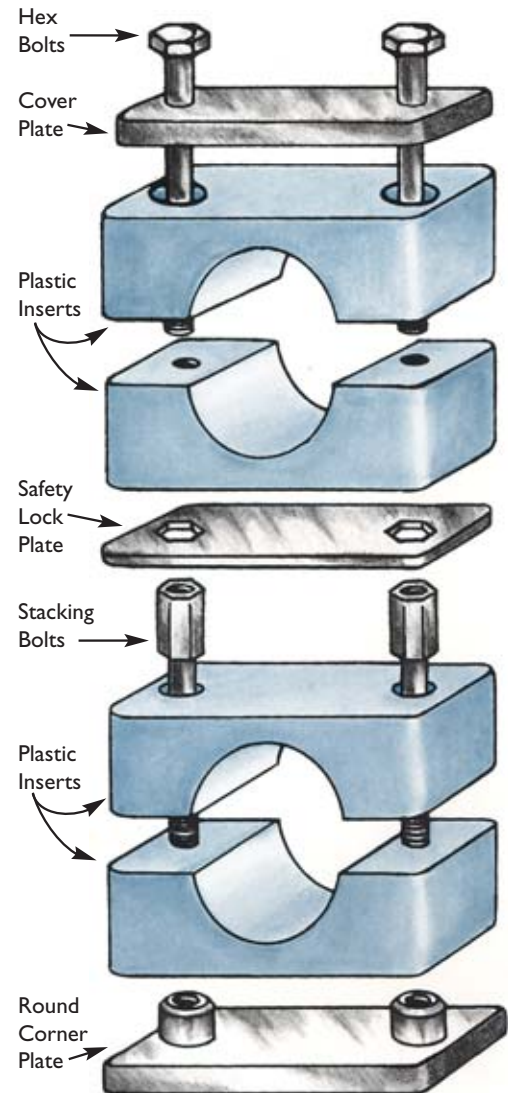
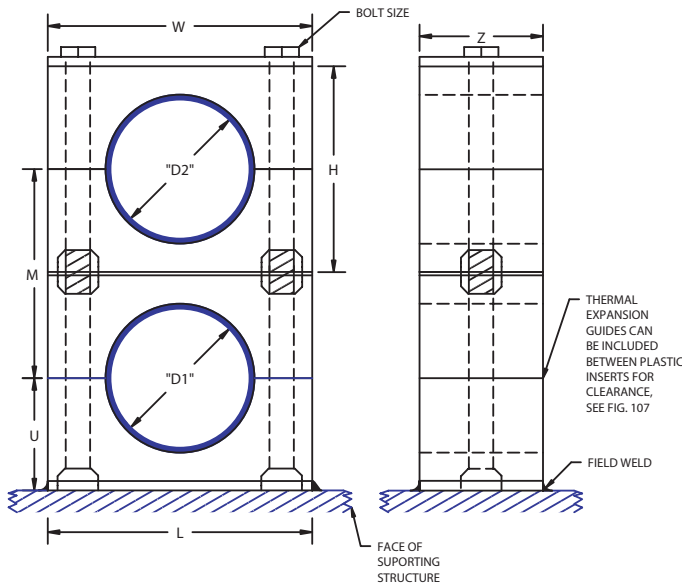
Material: Carbon Steel; 304 Stainless; 316 Stainless.

Finish: Plain carbon; electro-zinc plated carbon; 304 or 316 mill finish; 304 or 316 electro-polished.

Plastic Inserts: Polypropylene (color blue) up to 212° F.
Santoprene (color tan) up to 302° F.

Installation: Weld bottom plate to structure or supporting member.
Let cool before mounting plastic inserts.

Ordering: Specify figure number, name, any two combination of sizes from 1/4" through 2" diameter, hardware material, finish and plastic insert material.



| TUBE OR PIPE SIZE | "D1" + "D2" | "D" INCHES | GROUP NO. | INCHES | | | | | | BOLT SIZE |
|-------------------|---|------------|-----------|--------|------|------|------|------|------|-----------|
| | | | | W | H | Z | U | L | M | |
| 1/4 T | Choose any double combination of Tube or Pipe Sizes between 1/4T and 2T | .250 | 6 | 3.34 | 2.63 | 1.19 | 1.44 | 3.37 | 2.69 | 1/4 - 20 |
| 3/8 T | | .375 | | | | | | | | |
| 1/2 T | | .500 | | | | | | | | |
| 5/8 T | | .625 | | | | | | | | |
| 3/4 T | | .750 | | | | | | | | |
| 1/2 P | | .840 | | | | | | | | |
| 7/8 T | | .875 | | | | | | | | |
| 1 T | | 1.000 | | | | | | | | |
| 3/4 P | | 1.050 | | | | | | | | |
| 1-1/4 T | | 1.250 | | | | | | | | |
| 1 P | | 1.315 | | | | | | | | |
| 1-1/2 T | | 1.500 | | | | | | | | |
| 1-1/4 P | | 1.660 | | | | | | | | |
| 1-1/2 P | | 1.900 | | | | | | | | |
| 2 T | | 2.000 | | | | | | | | |

Contact Behringer or your local distributor for other stack-of-2 diameter configurations.