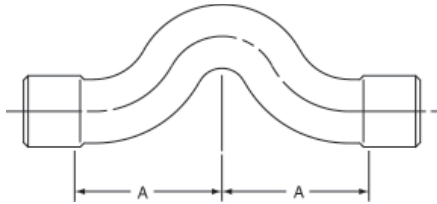


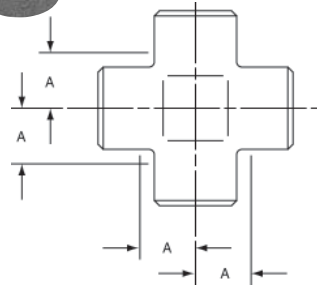
COUPLINGS *continued*



736
Cross-Over Coupling
C x C – Cast

NOM. SIZE	APPROX. NET WT./LBS.	DIM. A INCHES
1/2	0.27	1 ⁷ / ₁₆
3/4	0.60	1 ²⁹ / ₃₂

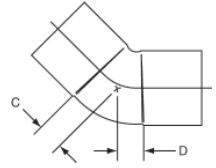
CROSSES



735
Cross C x C x C x C – Cast

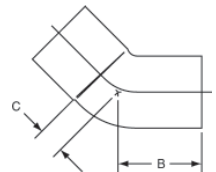
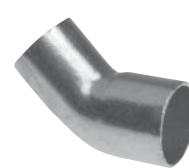
NOM. SIZE	APPROX. NET WT./LBS.	DIM. A INCHES
3/8	0.09	3/8
1/2	0.15	7/16
3/4	0.30	9/16
1	0.54	2 ³ / ₃₂
1 1/4	0.78	7/8
1 1/2	1.05	1
2	2.00	1 ¹ / ₄
2 1/2	2.96	1 ¹ / ₂

ELBOWS



606
45° Elbow C x C – Wrot

NOM. SIZE	APPROX. NET WT./LBS.	DIM. C INCHES	DIM. D INCHES
1/8	0.01	1/4	1/4
1/4	0.02	9/32	9/32
3/8	0.03	3/16	3/16
1/2	0.04	9/32	9/32
5/8	0.09	15/32	15/32
3/4	0.10	11/32	11/32
7/8	0.20	11/16	11/16
1	0.16	3/8	3/8
1 1/4	0.25	17/32	17/32
1 1/2	0.35	19/32	19/32
2	0.65	25/32	25/32
2 1/2	1.07	29/32	29/32
3	1.58	1 ¹ / ₈	1 ¹ / ₈
4	3.35	1 ⁷ / ₁₆	1 ⁷ / ₁₆
5	11.05	1 ⁹ / ₁₆	1 ⁹ / ₁₆
6	16.95	2	2
8	23.00	2 ⁹ / ₃₂	2 ⁹ / ₃₂



606-2
45° Fitting Elbow Ftg x C – Wrot

NOM. SIZE	APPROX. NET WT./LBS.	DIM. B INCHES	DIM. C INCHES
1/4	0.02	9/16	1/4
1/2	0.04	3/4	7/32
5/8	0.08	1 ¹ / ₈	13/32
3/4	0.10	1 ¹ / ₁₆	5/16
1	0.16	1 ⁷ / ₃₂	15/32
1 1/4	0.25	1 ¹⁹ / ₃₂	17/32
1 1/2	0.35	1 ²⁵ / ₃₂	19/32
2	0.65	2 ³ / ₁₆	25/32
2 1/2	1.07	2 ³ / ₁₆	29/32
3	1.55	2 ¹⁹ / ₃₂	1 ⁵ / ₃₂

Consult price sheet for Made to Order items and for minimum order quantities.