

CleanStar® C60/C67 HPW PFA T-body 1" x 1/2", 3/4"

Ultra pure PFA diaphragm valve 2/2 way, manually operated (C67) and pneumatically operated (C60) with zero deadleg PFA T-valve body

- T-body design minimizes “dead legs” reducing “chemical holdout” and rinse times.
- Eliminates the need for tee fittings, reducing associated pressure loss and overall cost of installation.
- Requires less mounting space, ideal for compact distribution boxes

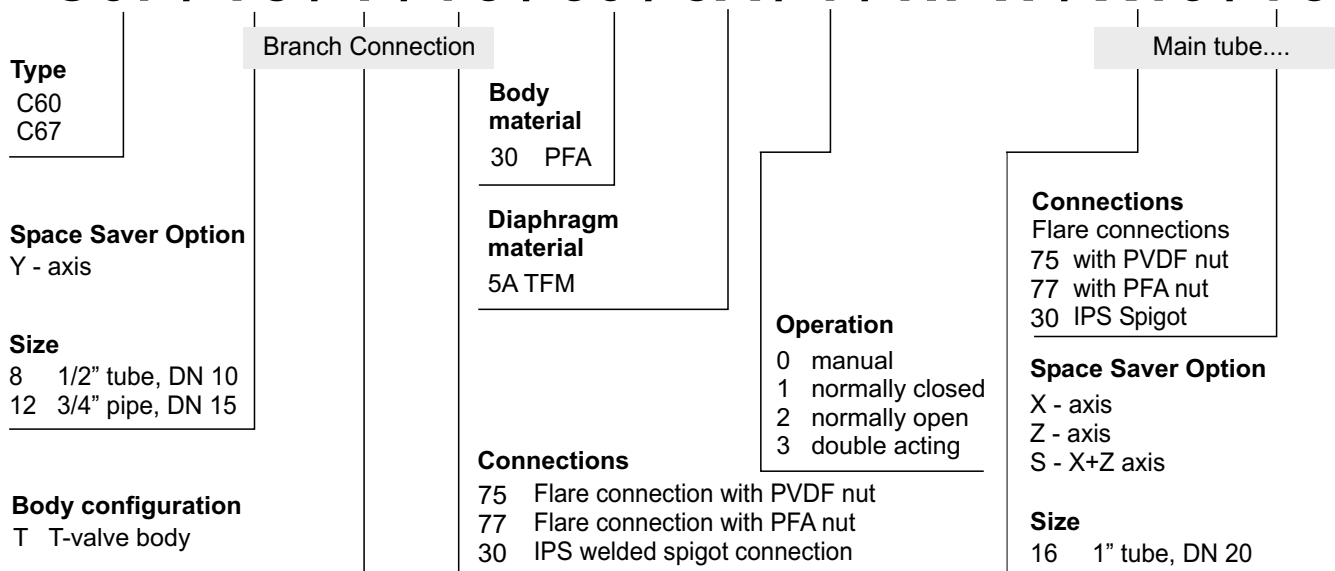
Technical details refer to technical data sheet C60/C67 with straight through body.

Control Pressure (PSI)		Connection
Control Function		
1	2 + 3	
100	60	G 1/8"

Main tube			Branch/Valve				Cv-Value (gal/min)	
Ref. no.	Size	Connections	Ref. no.	Ref. no.	Size	Connections	Ref. no.	
16	1" tube	Flare-connection	75 a. 77	16	3/4" tube	Flare-connection	75 a. 77	4.7
16	1" tube	Flare-connection	75 a. 77	16	1/2" tube	Flare-connection	75 a. 77	2.9

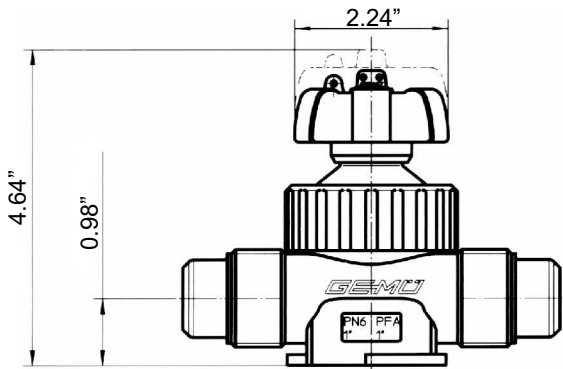
How to order

C67 / Y8 / T / 75 / 30 / 5A / 1 / HPW / X16 / 75

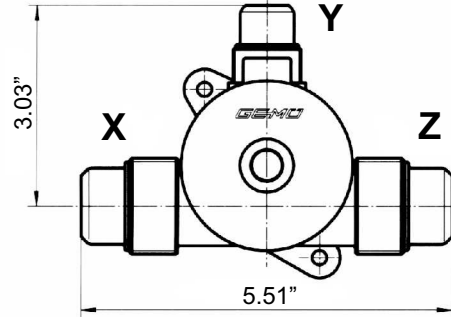
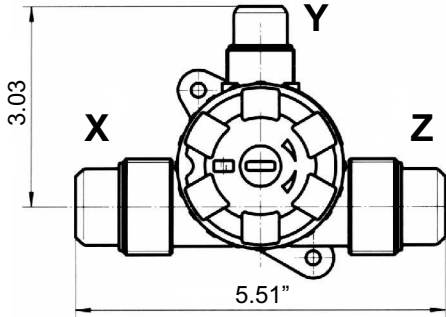
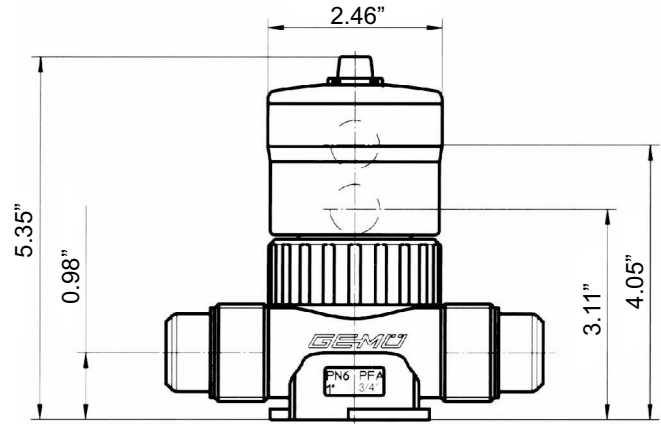


Dimensions: Valid for 1/2" and 3/4" Branch connections (ref. no. 75, 77 and 30)

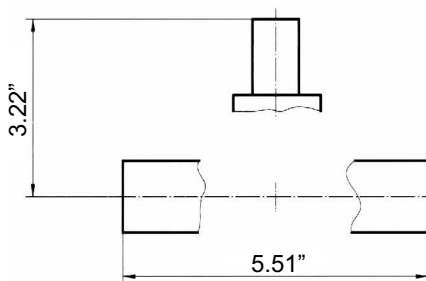
C 67



C 60



IPS welded spigot connections (on request)



Space saver (pos. X, Y or Z)

