

PVC Angle and Y-Pattern

150 psi at 73°F water—non-shock

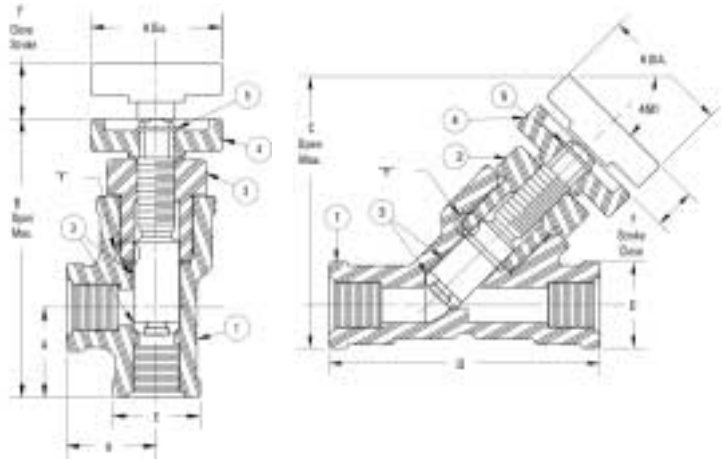


Chemtrol Figure No.
T45AC-V



Chemtrol Figure No.
T45YP-V

Both styles available with threaded end connections only.



Both styles of Chemtrol Globe Valves, the angle and the Y-pattern, utilize interchangeable components within any given valve size. Only the bodies are different. The Y-pattern style has a minimal pressure-drop, even when compared with a conventional upright style globe valve. Therefore, it is an excellent choice for combination on-off and throttling applications.

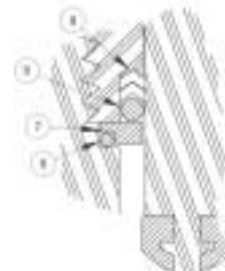
The Chemtrol Angle Valve is used where a higher pressure-drop is desirable. One of its more common applications is as a pump by-pass control valve.

Features

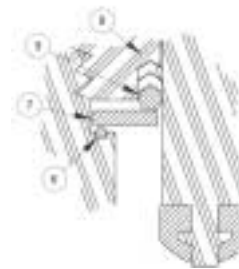
- Malleable glass reinforced PTFE (Teflon) seat disk ensures long-lasting positive sealing.
- Stub acme thread on stem provides rapid open-close operation.
- Liquid or slurry never touches stem threads.
- Can be used for both on-off and throttling control of fluid flow.
- Easy in-line maintenance.
- PVC construction with PTFE seat and FPM seals.



Detail "Y" Enlarged View
1/4" Size Valve



Detail "Y" Enlarged View
1/2" & 3/4" Size Valve



Detail "Y" Enlarged View
1" Size Valve

Valve Construction

Part	Material
1. Body – Angle – or Y-Pattern	PVC
2. Bonnet	PVC
3. Stem Assembly	PVC w/ Glass Filled PTFE Seat Disk
4. Handle	PVC
5. Snap Ring Retainer	Zinc Plated Steel
6. O-Ring – Body Seal	FPM ²
7. Energizer Back-Up Washer ¹	PVC
8. CV Stem Seal (2 required) ¹	PTFE (Teflon)
9. O-Ring – Stem Seal Energizer ¹	FPM ²

¹ Items not required for 1/4" valve.

² FPM is also known as FKM. These seals are molded from Viton or Fluorel brands of rubber.

Valve Dimensions – Weights – Flow Coefficients

Valve Size	Common Dimensions			Angle Valve ¹				Y-Pattern Valve ¹			
	Hub Dia. E	Close Stroke F	Handle Dia. H	Center-To-Face A	Open Max. B	Flow Coef. Cv ²	Approx. Weight Lbs.	End-To-End D	Open Max. C	Flow Coef. Cv ²	Approx. Weight Lbs.
1/4	0.88	.44	1.32	0.88	3.56	1.1	0.11	2.75	2.75	3.1	0.12
1/2	1.25	.75	2.19	1.31	5.38	5.4	0.28	3.50	4.63	17.7	0.30
3/4	1.50	.94	2.19	1.41	6.50	9.9	0.47	4.25	5.56	32.5	0.53
1	1.75	1.19	2.19	1.88	7.88	15.8	0.69	5.00	6.31	49.3	0.73

¹ Available with threaded end connections only.

² Cv measured with valves completely open.

Do not use or test the products in this catalog with compressed air or other gases. See Chemtrol Chem-Aire® literature for information about shatter-resistant thermoplastic piping systems specifically designed for compressed air and other gases.