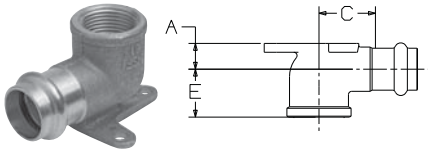


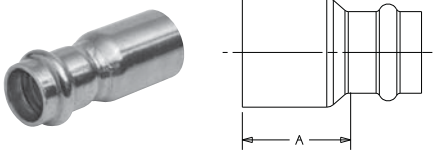
ELBOWS (Cont.)



PC707-3-5
90° Drop Elbow P x F – Cast

NOM. SIZE	APPROX. NET WT. LBS.	DIMENSIONS INCHES		
		A	C	E
1/2	.283	15/32	1 1/32	7/8
3/4	.467	7/8	1 1/8	1 1/16

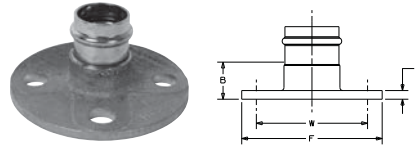
FITTING REDUCERS



PC600-2
Fitting Reducer Ftg x P – Wrot

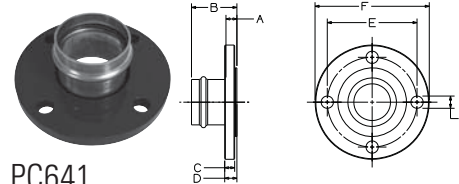
NOM. SIZE	APPROX. NET WT./LBS.	DIM. A INCHES
3/4 x 1/2	.104	1 1/4
1 x 1/2	.133	1 3/4
1 x 3/4	.143	1 7/16
1 1/4 x 3/4	.211	1 3/8
1 1/4 x 1	.198	1 5/8
1 1/2 x 1/2	.269	1 7/8
1 1/2 x 3/4	.281	1 27/32
1 1/2 x 1	.267	1 7/8
1 1/2 x 1 1/4	.282	1 3/4
2 x 1/2	.461	2 1/4
2 x 3/4	.470	2 3/16
2 x 1	.374	2 3/4
2 X 1 1/4	.459	1 15/16
2 x 1 1/2	.737	2 3/16
2 1/2 x 1	.507	2 11/32
2 1/2 x 1 1/4	.567	2 9/32
2 1/2 x 1 1/2	.594	2 13/32
2 1/2 x 2	.596	1 31/32
3 x 1 1/4	.882	3 9/32
3 x 1 1/2	.812	2 5/8
3 x 2	.814	2 9/16
3 x 2 1/2	.820	2 1/4
4 x 2	1.670	3 13/32
4 x 2 1/2	1.676	3 1/32
4 x 3	2.013	3 1/32

FLANGES



PC741
Adapter Flange
P x Flange - Bronze Flange/Wrot Outlet

NOM. SIZE	APPROX. NET WT. LBS.	DIMENSIONS INCHES			
		B	F	G	W
1	1.419	1 5/32	4 1/4	1/4	3 1/8
1 1/4	1.621	1 7/32	4 5/8	1/4	3 1/2
1 1/2	2.186	1 11/32	5	5/16	3 7/8
2	3.352	1 19/32	6	3/8	4 3/4



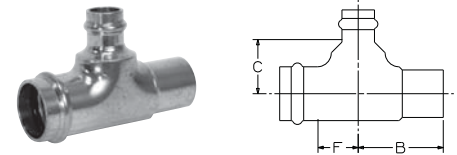
PC641
Adapter Flange P x Flange - Wrot

NOM. SIZE	APPROX. NET WT. LBS.	DIMENSIONS INCHES			
		A	B	C	
2 1/2	6.177	19/32	2 25/32	5/8	
3	7.554	3/4	2 15/16	21/32	
4	11.211	29/32	3 3/8	27/32	

NOM. SIZE	DIMENSIONS INCHES			
	D	E	F	G
2 1/2	3/4	5 1/2	7	3/4
3	13/16	6	7 1/2	3/4
4	1	7 1/2	9	3/4

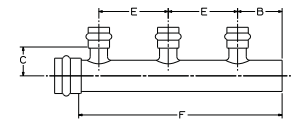
NOTE: 4" requires (8) "G" holes equally spaced.
NOTE: Mates with ANSI Class 125/150 flanges.

MANIFOLDS



PC695
1-Outlet Manifold
P x Ftg x P - Wrot

NOM. SIZE	APPROX. NET WT. LBS.	DIMENSIONS INCHES		
		B	C	F
1 x 1 x 1/2	.522	1 15/16	1 1/8	1 5/16



PC696
3-Outlet Manifold
P x Ftg x P - Wrot

NOM. SIZE	APPROX. NET WT. LBS.	DIMENSIONS INCHES			
		B	C	E	F
1 x 1 x 1/2	.700	1 21/32	3/4	1 31/32	6 3/8

*See online catalog at www.nibco.com

Cont. next page

NOTE: Some items not certified by NSF to NSF/ANSI 61. See manufacturer's listing for approved sizes and applications, or contact NIBCO Technical Services for a complete listing of current certifications.