

**FIG. 126**

**STANCHION WITH BASE PLATE**

**Size Range:** 1/4" tube diameter through 6" tube diameter.

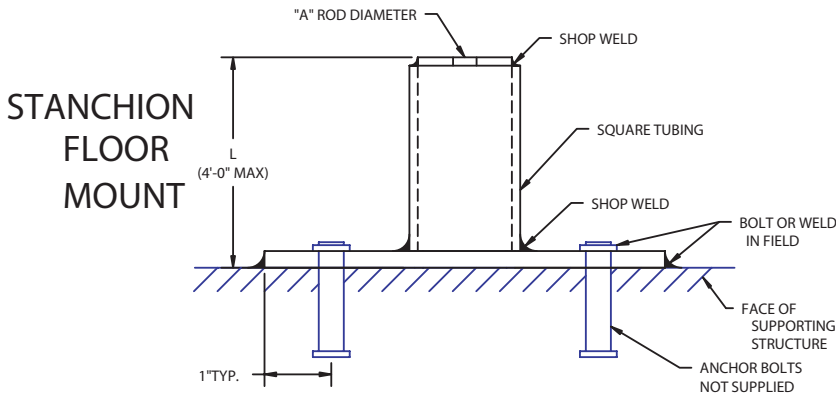
**Hardware**

**Material:** Carbon Steel; 304 Stainless; 316 Stainless.

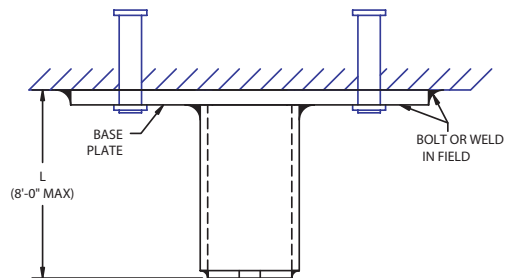
**Finish:** Plain carbon; electro-zinc plated carbon; 304 or 316 mill finish; 304 or 316 electro-polished.

**Installation:** Bolt or weld base plate to supporting structure.

**Ordering:** Specify figure number, name, "L" length, rod diameter, material and finish. Also specify bolt or weld mount of base plate. Anchor Bolts not included.

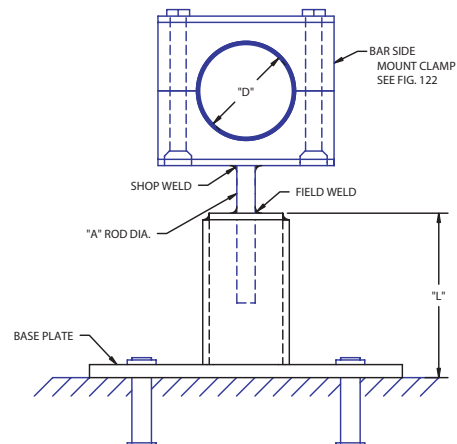


**STANCHION HANG MOUNT**



BASE PLATE CAN BE SUPPLIED WITHOUT MOUNTING HOLES

**TYPICAL ASSEMBLY**



L = 4' - 0" max for floor mount stanchion.

L = 8' - 0" max for hang mount stanchion.

TUBE OR PIPE SIZE	"D" INCHES	GROUP NO.	SQUARE TUBE	"A" ROD DIAMETER	BASE PLATE SIZE	ANCHOR BOLT SIZE				
1/4 T	.250	3	2"x2"x1/8"	.5"	6"x6"x3/8"	3/8" x 3-3/4"				
3/8 T	.375									
1/2 T	.500									
3/4 T	.750									
1/2 P	.840									
1 T	1.000									
1/4 T	.250	6					2"x2"x1/8"	.5"	6"x6"x3/8"	3/8" x 3-3/4"
3/8 T	.375									
1/2 T	.500									
5/8 T	.625									
3/4 T	.750									
1/2 P	.840									
7/8 T	.875									
1 T	1.000									
3/4 P	1.050									
1-1/4 T	1.250									
1 P	1.315									
1-1/2 T	1.500									
1-1/4 P	1.660									
1-1/2 P	1.900									
2 T	2.000	7	2"x2"x1/8"	.75"	6"x6"x3/8"	3/8" x 3-3/4"				
2 T	2.000									
2 P	2.375									
2-1/2 T	2.500									
2-1/2 P	2.875									
3 T	3.000									
3-1/2 T -3 P	3.500	7A		3"x3"x3/16"			1.00"	8"x8"x1/2"	1/2" x 4-1/2"	
4 T	4.000									
6 T	6.000	8		3"x3"x3/16"			1.00"	8"x8"x1/2"	1/2" x 4-1/2"	