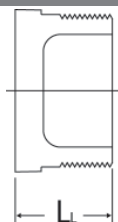


Plugs

Chemtrol
Fig. No.

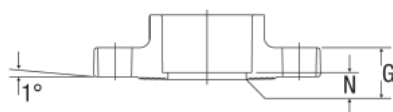
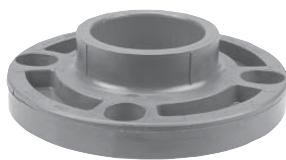
6516-4/6616-4 Thread Plug (MPT)



Nominal Size	Universal Part No.		Ctn. Qty.	Approx. Lbs./Ea.	Dim. L _t
	Red	Natural			
1/2	3850-005	4850-005	5	0.03	1.14
3/4	3850-007	4850-007	5	0.08	1.26
1	3850-010	4850-010	5	0.10	1.48
1 1/2	3850-015	4850-015	2	0.18	1.78
2	3850-020	4850-020	2	0.26	1.89

Class 150 Flanges

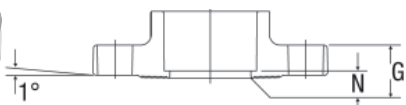
6551-W/6651-W Socket Flange (S), One-Piece (Webbed Design)



Nominal Size	Universal Part No.		Ctn. Qty.	Approx. Lbs./Ea.	Dim. G	Dim. N
	Red	Natural				
2	3851-020	4851-020	2	0.89	0.90	0.27
3	3851-030	4851-030	2	1.97	1.10	0.34
4	3851-040	4851-040	2	2.97	1.21	0.31
6	3851-060	4851-060	1	4.54	1.32	0.21

Note: One-piece webbed flanges have oblong bolt holes which permit mating with ANSI B16.5, 150lb.; BS 1560, class 150; ISO 2084, PN10; and DIN 2532, PN10.

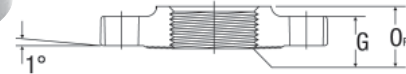
6551-H/6651-H Socket Flange (S), One-Piece (Solid)



Nominal Size	Universal Part No.		Ctn. Qty.	Approx. Lbs./Ea.	Dim. G	Dim. N
	Red	Natural				
1/2	3851-H05	4851-H05	5	0.25	0.53	0.19
3/4	3851-H07	4851-H07	5	0.33	0.59	0.20
1	3851-H10	4851-H10	5	0.48	0.66	0.21
1 1/2	3851-H15	4851-H15	2	0.75	0.72	0.23
2	3851-H20	4851-H20	2	1.16	0.90	0.27
3	3851-H30	4851-H30	2	2.56	1.10	0.34
4	3851-H40	4851-H40	2	3.86	1.21	0.31
6	3851-H60	4851-H60	1	5.89	1.32	0.21

Chemtrol
Fig. No.

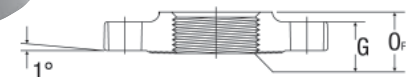
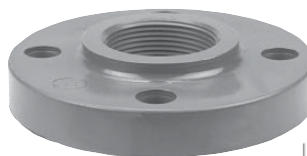
6551-W-3/6651-W-3 Thread Flange (FPT), One-Pc (Webbed Design)



Nominal Size	Universal Part No.		Ctn. Qty.	Approx. Lbs./Ea.	Dim. G	Dim. O _F
	Red	Natural				
2	3852-020	4852-020	2	0.88	0.90	1.15

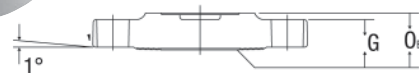
Note: One-piece webbed flanges have oblong bolt holes which permit mating with ANSI B16.5, 150 lb.; BS 1560, class 150; ISO 2084, PN10; and DIN 2532, PN10.

6551-H-3/6651-H-3 Thread Flange (FPT), One Piece (Solid)



Nominal Size	Universal Part No.		Ctn. Qty.	Approx. Lbs./Ea.	Dim. G	Dim. O _F
	Red	Natural				
1/2	3852-H05	4852-H05	5	0.25	0.53	0.87
3/4	3852-H07	4852-H07	5	0.34	0.59	0.88
1	3852-H10	4852-H10	5	0.47	0.66	1.07
1 1/2	3852-H15	4852-H15	2	0.71	0.72	1.11
2	3852-H20	4852-H20	2	1.10	0.90	1.15

6519-W/6619-W Blind Flange, One-Piece (Webbed Design)



Nominal Size	Universal Part No.		Ctn. Qty.	Approx. Lbs./Ea.	Dim. G	Dim. O _B
	Red	Natural				
2	3853-020	4853-020	2	0.91	0.90	1.10
3	3853-030	4853-030	2	2.08	1.10	1.36
4	3853-040	4853-040	2	3.02	1.21	1.45
6	3853-060	4853-060	1	5.33	1.32	1.58

Note: One-piece webbed flanges have oblong bolt holes which permit mating with ANSI B16.5, 150 lb.; BS 1560, class 150; ISO 2084, PN10; and DIN 2532, PN10.