

## Fig. 4 - Standard Pipe Clamp

## Fig. 4F - Standard Pipe Clamp Felt Lined

## Fig. 4PVC - Standard Pipe Clamp PVC Coated

Component of State of California OSHPD Approved Seismic Restraints System


**Size Range** — (Fig. 4) Size 1/2" thru 30" pipe.

**Size Range** — (Fig. 4F) Size 1/2" thru 2 1/2" copper tubing

**Material** — Carbon Steel

**Function** — Recommended for the suspension of non-insulated pipe or insulated pipe with Fig. 220 shields. (Use Fig. 330 Weldless Eye Nut, Fig. 102 Eye Rod or Fig. 101 Welded Eye Rod.) Also recommended for attachment of sway bracing up to 3 1/2" pipe size, for larger pipe sizes use Fig. 4A. Fig. 4F and Fig. 4PVC are designed to reduce noise and vibration and/or prevent electrolysis.

**Approvals** — Underwriters' Laboratories Listed in the USA (**UL**), Canada (**cUL**) 1/2" - 8", and approved by Factory Mutual Engineering, 3/4" - 8". Federal Specification WW-H-171E, Type 4, 1 1/2" thru 24" and Manufacturers Standardization Society SP-69, Type 4. Included in our Seismic Restraints Catalog approved by the State of California Office of Statewide Health Planning and Development (OSHPD). For additional load, spacing and placement information relating to OSHPD projects, please refer to the TOLCO Seismic Restraint Systems Guidelines.

 Note — When the Fig. 4 is used as a sway brace, to ensure performance, the **UL Listing requires that it must be used with other TOLCO® brace products.**
**Maximum Temperature** — 750°F

**Finish** — Plain

**Note** — Available in Electro-Galvanized and HDG finish or Stainless Steel materials.

**Order By** — Figure number, pipe size and finish.

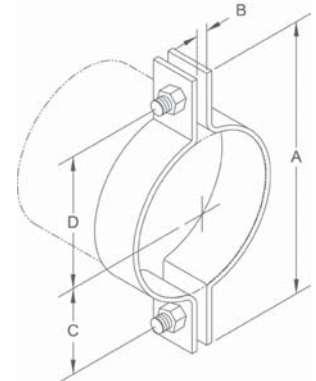
**Order Note** — When ordering Fig. 4F allow for 3/16" felt on each half of clamp.


Fig. 4

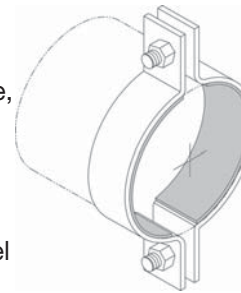


Fig. 4F

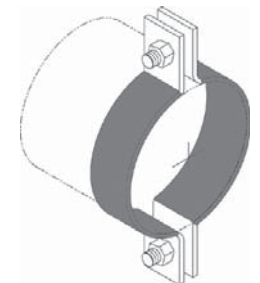


Fig. 4PVC

### Dimensions • Weights

Pipe Size	A	B	C	D	Bolt Size	Max. Design Load Lbs. For Service Temp.		Approx. Wt./100
						650°	750°F	
1/2	37/16	1/4	1 1/8	1 1/8	5/16	500	445	29
3/4	39/16	1/4	1 1/4	1 1/4	5/16	500	445	31
1	39/16	1/4	1 1/4	1 5/16	5/16	500	445	35
1 1/4	43/16	3/8	1 3/8	1 11/16	5/16	500	445	40
1 1/2	49/16	3/8	1 5/8	1 7/8	5/16	800	715	42
2*	59/16	3/8	2	2 1/4	3/8	1040	930	93
2 1/2*	67/16	3/8	2 1/2	2 3/4	1/2	1040	930	126
3*	7	3/8	2 3/4	3 1/16	1/2	1040	930	141
3 1/2*	7 11/16	3/8	3 1/8	3 3/8	1/2	1040	930	154
4	8 1/2	5/8	3 5/16	3 11/16	1/2	1040	930	229
5	9 3/4	3/4	3 7/8	4 3/8	5/8	1040	930	261
6	11 5/8	3/4	4 7/8	5 1/8	3/4	1615	1440	537
8	13 5/16	1	5 5/8	6	3/4	1615	1440	625
10	16 1/2	1	7 1/4	7 1/4	7/8	2490	2220	1378
12	18 1/2	1	8 1/4	8 1/4	7/8	2490	2220	1574
14	20	1 1/8	9	9	7/8	2490	2220	2103
16	23	1 1/8	10 1/4	10 1/4	7/8	2490	2220	2314
18	25 7/8	1 1/4	11 1/2	11 1/2	1	3060	2730	3276
20	28	1 3/8	12 1/2	12 1/2	1 1/8	3060	2730	3863
24	33 1/2	1 5/8	15 1/4	15 1/4	1 1/4	3060	2730	5222
30	41 7/8	2	19	19	1 3/4	3500	3360	10511

\*Meets UL 203A requirements for attachment of sway bracing. Horizontal design load for 1/2"-2" - 380#, 2 1/2" - 395#, 3" - 435#, 3 1/2" - 540#