

Fig. 317A - Pipe Saddle and Threaded Pipe Adjuster

Size Range — 2½" thru 36" pipe

Material — Carbon Steel with cast iron reducer

Function — Designed to support horizontal pipe from floor stanchion where vertical adjustment is required. To complete floor stanchion, use with Fig. 316T Threaded Pipe Stand.

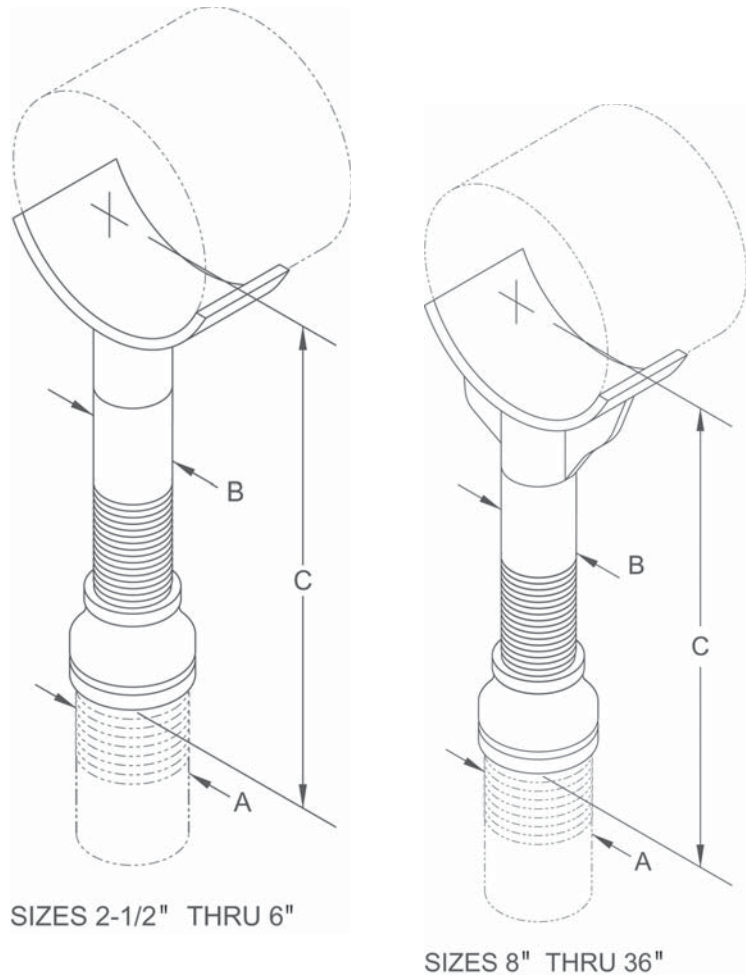
Approvals — Conforms to Federal Specification WW-H-171E, Type 39, 4" thru 36", and Manufacturers Standardization Society SP-69, Type 38

Finish — Plain

Note — Available in Electro-Galvanized and HDG finish or Stainless Steel materials.

Order By — Figure number, pipe size, adjuster size and finish

Note — Order with TOLCO® Fig. 316T for complete stanchion support



SIZES 2-1/2" THRU 6"

SIZES 8" THRU 36"

Dimensions • Weights

Pipe Size	A Stand Pipe Size	B Adj. Pipe Size	C Min.	C Max.	Approx. Wt./100
2½	2	1½	7	11½	453
3	2	1½	7 ⁵ / ₁₆	11 ¹³ / ₁₆	466
3½	2	1½	7 ⁹ / ₁₆	12 ¹ / ₁₆	482
4	3	2½	10¼	14¾	1248
5	3	2½	11 ¹ / ₁₆	15 ⁹ / ₁₆	1282
6	3	2½	11 ⁹ / ₁₆	16 ¹ / ₁₆	1343
8	3	2½	13 ⁹ / ₁₆	18 ¹ / ₁₆	1583
10	3	2½	14 ⁹ / ₈	19 ¹ / ₈	1665
12	3	2½	15 ⁵ / ₈	20 ¹ / ₈	1800
14	4	3	18 ⁷ / ₈	23 ³ / ₈	2761
16	4	3	19 ⁷ / ₈	24 ³ / ₈	2900
18	6	4	22¼	26¾	4468
20	6	4	23¼	27¾	4663
22	6	4	24¼	28¾	4848
24	6	4	26½	31	5218
26	6	4	27½	32	5420
30	6	4	29 ⁵ / ₈	34 ¹ / ₈	6295
32	6	4	30 ⁵ / ₈	35 ¹ / ₈	6478
36	6	4	32 ⁵ / ₈	37 ¹ / ₈	6856