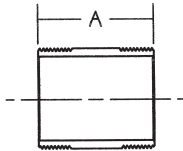
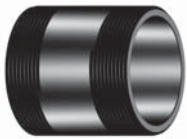


# ABS & PVC-DWV Fittings

5800 Series - ABS/4800 Series PVC

## NIPPLES

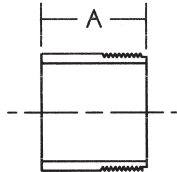
**5829**



### Nipples 3" (MIPT x MIPT)

NOM. SIZE	ABS APPROX. NET WT./LBS.	DIM. A INCHES
* 3	.272	3
* 4	.393	4
* 6	.595	6
* 8	.847	8
* 10	1.092	10
* 12	1.274	12

**5829-2**

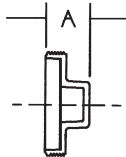
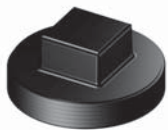


### Nipples 3" (MIPT x Plain End)

NOM. SIZE	ABS APPROX. NET WT./LBS.	DIM. A INCHES
* 3	.315	3
* 4	.425	4
* 6	.670	6
* 8	.897	8
* 10	1.115	10

## PLUGS

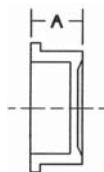
**5818 4818**



### Plug (MIPT)

NOM. SIZE	ABS APPROX. NET WT./LBS.	PVC APPROX. NET WT./LBS.	DIM. A INCHES
1 <sup>1</sup> / <sub>4</sub>	.029	.042	1
1 <sup>1</sup> / <sub>2</sub>	.047	.062	1 <sup>3</sup> / <sub>8</sub>
2	.060	.083	1 <sup>3</sup> / <sub>8</sub>
* 2 <sup>1</sup> / <sub>2</sub>	.090	N/A	2 <sup>1</sup> / <sub>2</sub>
3	.161	.226	1 <sup>3</sup> / <sub>4</sub>
* 3 <sup>1</sup> / <sub>2</sub>	.202	N/A	1 <sup>3</sup> / <sub>4</sub>
4	.274	.367	1 <sup>7</sup> / <sub>8</sub>
6	.622	.875	2

**5826**



### Fitting Plug (Spg)

NOM. SIZE	ABS APPROX. NET WT./LBS.	DIM. A INCHES
* 1 <sup>1</sup> / <sub>2</sub>	.043	3/4
* 2	.090	7/8

\* Available in ABS only

Do not use or test the products in this catalog with compressed air or other gasses.