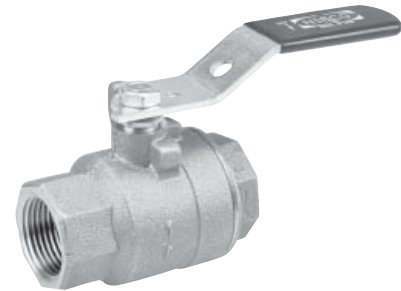


600 lb. WWP Bronze Ball Valves

Fire Protection Valve • Two-Piece Body • Chrome Plated Ball •
Blowout-Proof Stem • Reinforced TFE Seats • Full Port

600 PSI/41.4 Bar Non-Shock Cold Water



CONFORMS TO MSS SP-110

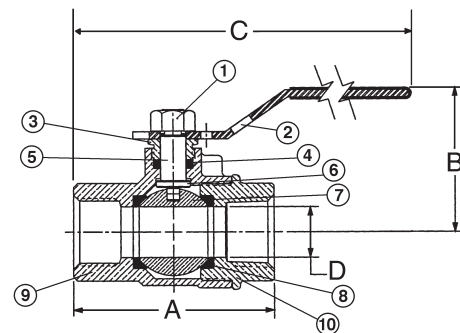
MATERIAL LIST

PART	SPECIFICATION
1. Handle Nut	Zinc Plated Steel
2. Handle	Zinc Plated Steel Clear Chromate Plastisol Coated
3. Threaded Pack Gland	Brass ASTM B 16 Alloy C36000
4. Packing	TFE
5. Stem	Silicon Bronze ASTM B 371 Alloy C69430 or ASTM B 99 Alloy C65100
6. Thrust Washer	Reinforced TFE
7. Ball	Brass ASTM B 124 Alloy C37700 or ASTM B 16 Alloy C36000 with Hard Chrome Plate
8. Seat Ring (2)	Reinforced TFE
9. Body	Cast Red Bronze ASTM B 584 Alloy C84400
10. Body End Piece	Cast Red Bronze ASTM B 584 Alloy C84400

1/4" and 3/8" size only has a 304 stainless steel grounding washer.

T-585-70

Threaded



T-585-70

NPT x NPT

DIMENSIONS—WEIGHTS—QUANTITIES

Size	Dimensions								Weight	Box Qty.	Master Ctn. Qty.
	A		B		C		D Port				
In. mm.	In.	mm.	In.	mm.	In.	mm.	In.	mm.	Lbs.	Kg.	
1/4 8	2.00	51	1.75	44	5.00	127	.38	10	.45	.20	10
3/8 10	2.00	51	1.75	44	5.00	127	.38	10	.45	.20	10
1/2 15	2.44	62	1.88	48	5.19	132	.50	13	.64	.29	10
3/4 20	2.94	75	2.25	57	6.25	159	.75	19	1.33	.60	5
1 25	3.34	85	2.38	60	6.44	164	1.00	25	1.79	.81	5
1 1/4 32	4.19	106	3.00	76	6.75	171	1.25	32	2.17	.99	5
1 1/2 40	4.72	120	3.16	80	9.06	230	1.25	32	3.27	1.49	5
2 50	5.16	131	3.50	89	9.25	235	2.00	51	5.09	2.31	2