

FITTINGS

Figures 610, 601, 619 & 660



FIGURE 610
90° ELBOW CAST

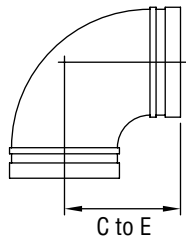


FIGURE 601
45° ELBOW CAST

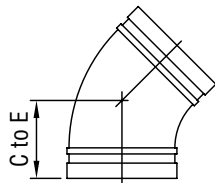


FIGURE 619
TEE CAST

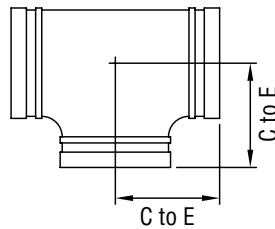
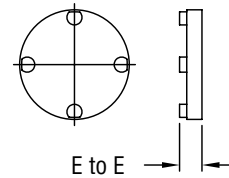


FIGURE 660
CAP CAST



**COPPER
GROOVED
SYSTEM**

Nominal Size Inches mm	Copper Tube O.D. Inches mm	Figure 610		Figure 601		Figure 619		Figure 660	
		Nominal C to E Inches mm	Approx. Weight lbs kg	Nominal C to E Inches mm	Approx. Weight lbs kg	Nominal C to E Inches mm	Approx. Weight lbs kg	Nominal E to E Inches mm	Approx. Weight lbs kg
2	2.125	2.91	1.95	2.19	1.6	2.69	2.5	.92	.7
50	54,0	73,9	0,9	55,6	0,7	68,3	1,13	23,4	,3
2½	2.625	3.31	2.65	2.31	2.1	3.20	3.0	.92	1.0
65	66,7	84,1	1,2	58,7	1,0	81,3	1,36	23,4	,5
3	3.125	3.81	3.65	2.59	2.8	3.52	4.05	.92	1.4
80	79,4	96,8	1,66	65,8	1,3	89,4	2,2	23,4	,6
4	4.125	4.75	7.0	3.19	5.7	4.25	9.15	.92	2.4
100	104,8	120,7	3,18	81,0	2,6	108,0	4,15	23,4	1,1
5	5.125	5.94	11.6	3.25	8.0	5.94	17.75	.92	4.2
125	130,2	150,9	5,26	82,6	3,6	150,9	8,05	23,4	1,9
6	6.125	6.94	16.62	3.5	10.5	6.94	24.4	.92	5.9
150	155,6	176,7	7,54	88,9	4,8	176,3	11,07	23,4	2,7
8	8.125	7.75	23.6	4.25	16.9	7.75	36.25	.92	10.2
200	206,4	196,9	10,7	108,0	7,7	196,9	16,44	23,4	4,6

Please refer to General Notes on page 17.