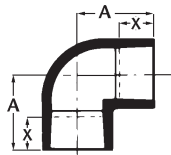


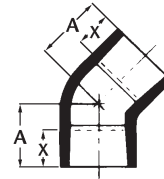
GREEN THREAD® Performance Plus™ FITTINGS DIMENSIONS

GREEN THREAD (GT) Performance Plus fittings are filament wound with fiberglass and amine-cured epoxy resin. The fittings are rated for 450 psig (steady) pressure service up to 225°F.

90° Elbows
Bell x Bell



45° Elbows
Bell x Bell

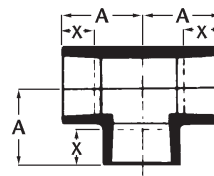


Nominal Pipe Size		A		X ⁽¹⁾		Nominal Weight	
(In.)	(mm)	(In.)	(mm)	(In.)	(mm)	(Lbs)	(kg)
8	200	19.50	495	5.50	140	21	9.5
10	250	23.25	591	7.00	178	40	18.1
12	300	27.00	686	7.63	194	60	27.2
14	350	30.00	762	6.50	165	118	53.6
16	400	34.00	864	6.75	172	155	70.4
18	450	40.75	1035	12.00	305	252	114
20	500	47.25	1200	14.00	356	360	163
24	600	57.00	1448	17.00	432	450	204

Nominal Pipe Size		A		X ⁽¹⁾		Nominal Weight	
(In.)	(mm)	(In.)	(mm)	(In.)	(mm)	(Lbs)	(kg)
8	200	12.50	318	5.50	140	15	6.8
10	250	14.50	368	7.00	178	30	13.6
12	300	16.50	419	7.63	194	45	20.4
14	350	17.63	448	6.50	165	76	34.5
16	400	20.00	508	6.75	172	100	45.5
18	450	24.93	633	12.00	305	140	64
20	500	29.68	754	14.00	356	196	89
24	600	35.91	912	17.00	432	280	127

NOTE: Short radius fittings are available on request.

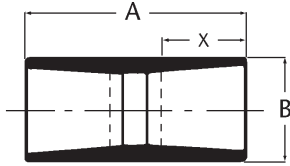
Tee



Nominal Pipe Size		A		X ⁽¹⁾		Nominal Weight	
(In.)	(mm)	(In.)	(mm)	(In.)	(mm)	(Lbs)	(kg)
8	200	13.50	342	5.50	140	54	24.5
10	250	15.75	400	7.00	178	75	34.0
12	300	17.00	432	7.63	194	100	45.4
14	350	19.50	495	6.50	165	160	72.7
16	400	21.25	540	6.75	172	200	90.9
18	450	26.38	670	12.00	305	416	189
20	500	31.25	794	14.00	356	468	212
24	600	35.00	889	17.00	432	585	266

(1) This is a nominal make-up dimension for drawing layout work only. Do not use for assembly dimensions.

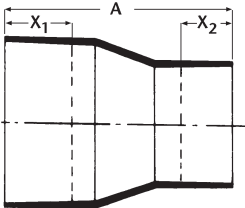
Sleeve Couplings
Bell x Bell



Nominal Pipe Size		GT A		X ⁽¹⁾		Nominal Weight	
(In.)	(mm)	(In.)	(mm)	(In.)	(mm)	(Lbs.)	(kg)
8	200	13.00	330	5.00	127	5.80	2.6
10	250	16.50	419	5.50	140	9.20	4.2
12	300	18.00	457	6.13	156	14.30	6.5
14	350	18.00	457	6.25	159	16.70	7.6
16	400	18.00	457	6.38	162	19.10	8.7
18	450	29.00	737	12.00	305	51.00	23.1
20	500	36.00	914	14.00	356	76.00	34.5
24	600	43.50	1105	17.00	432	122	55.3

Nominal Pipe Size		A		X ₁ ⁽¹⁾		X ₂ ⁽¹⁾		Nominal Weight	
(In.)	(mm)	(In.)	(mm)	(In.)	(mm)	(In.)	(mm)	(Lbs)	(kg)
8 x 6	200 x 150	16.63	422	5.50	140	2.75	70	21	9.5
10 x 8	250 x 200	21.00	533	7.00	178	5.50	140	40	18.1
12 x 10	300 x 250	23.50	597	7.63	194	7.00	178	60	27.2
14 x 12	350 x 300	26.38	670	6.50	165	7.63	194	57	25.9
16 x 14	400 x 350	29.50	749	6.75	171	6.50	165	76	34.5
18x16	450 x 400	33.75	857	12.00	305	6.63	168	143	65
20x18	500 x 450	44.50	1130	14.00	356	12.00	305	182	83
24x20	600 x 500	58.25	1480	17.00	432	14.00	356	247	112

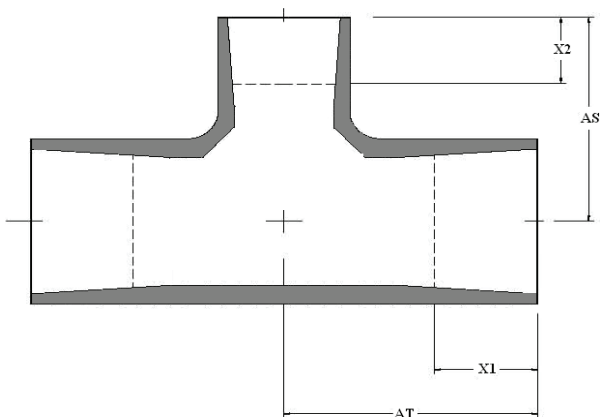
Concentric Reducers
Bell x Bell



Equivalent pipe footage to be added for standard fittings when calculating pressure loss for <i>Performance Plus</i> piping with fluid velocities of 10 ft/sec.								
Fitting	8"	10"	12"	14"	16"	18"	20"	24"
90° Elbow	10	13	16	18	22	24	28	34
45° Elbow	6	7	9	10	11	13	15	18
Tee-Flow-thru Run	13	16	20	23	27	31	35	43
Tee-Flow-thru Branch	38	49	60	70	82	93	105	130
One-step concentric reducers ⁽²⁾	15	12	6	5	5	4	4	6

⁽¹⁾ This is a nominal make-up dimension for drawing layout work only. Do not use for assembly dimensions.
⁽²⁾ NOTE: The equivalent footages to be added for concentric reducers are expressed in terms of the smaller pipe size, i.e. a 10"x8" concentric reducer is equivalent to 8 feet of 8" pipe.

Reducing Tees



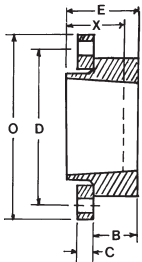
Nom. Size	AT	X ₁ ⁽¹⁾	AS	X ₂ ⁽¹⁾	Nom. Wgt.
In.	In.	In.	In.	In.	Lbs.
8x6	13.50	6.25	10.25	2.88	49.5
8x4	13.50	6.25	10.25	2.00	45.0
10x8	15.75	6.75	15.50	5.38	70.0
10x6	15.75	6.75	11.75	2.88	65.0
12x10	17.00	7.38	17.75	6.88	94.4
12x8	17.00	7.38	17.00	5.38	88.9
14x12	19.56	6.25	19.00	7.38	152.4
14x10	19.56	6.25	18.25	6.88	144.8
16x14	21.25	6.25	20.00	6.25	191.7
16x12	21.25	6.25	20.00	7.38	183.3
18x16	26.38	12.00	21.00	6.63	390
18x14	26.38	12.00	22.00	6.38	370
20x18	31.25	14.00	23.50	12.00	440
20x16	31.25	14.00	26.75	6.63	410
24x20	35.00	17.00	29.25	14.00	550
24x18	35.00	17.00	32.75	12.00	520

Nom. Size	AT	X ₁ ⁽¹⁾	AS	X ₂ ⁽¹⁾	Nom. Wgt.
mm	mm	mm	mm	mm	kg
200x150	343	159	260	73	22.4
250x200	343	159	260	51	20.4
300x250	400	171	394	136	31.8
250x150	400	171	298	73	29.4
300x250	432	187	451	174	42.8
300x200	432	187	432	136	40.3
350x300	497	159	483	187	69.1
350x250	497	159	464	174	65.7
400x350	540	159	508	159	87.0
400x300	540	159	508	187	83.1
450x400	670	305	533	168	177
450x350	670	305	559	162	168
500x450	794	431	597	305	200
500x400	794	431	679	168	186
600x500	889	356	743	356	250
600x450	889	356	832	305	236

⁽¹⁾This is a nominal make-up dimension for drawing layout work only. Do not use for assembly dimensions.

**RED THREAD II
Van Stone-Type Flange**

ASTM Designation Codes: 8" RTR-112F-665' 10"-16" RTR-112F-765; 18"-24" RTR-112F-668. All flanges are ANSI B16.5 300-lb. bolt hole circle. Use only with full-face, 60-70 durometer gaskets and flat-faced flanges.



Nominal Pipe Size	B	C	D	E	O	X ⁽¹⁾	Nom. Wgt. Hub Only	Bolt Holes Diameter	
(In.)	(In.)	(In.)	(In.)	(In.)	(In.)	(In.)	(Lbs.)	(No.)	(In.)
8	3.00	1.50	13.00	6.25	15.00	5.75	12.7	12	1.00
10	3.25	1.75	15.25	7.00	17.50	5.50	17.4	16	1.00
12	3.75	1.88	17.75	7.75	20.50	6.13	27.1	16	1.00
14	4.50	2.00	20.25	8.00	23.00	5.25	31.6	20	1.00
16	5.38	2.25	22.50	9.00	25.50	5.25	36.1	20	1.38
18	7.00	2.25	24.75	13.00	28.00	12.00	54	16	1.25
20	8.00	2.25	27.00	16.00	30.50	14.00	80	20	1.25
24	9.63	2.50	32.00	20.00	36.00	17.00	120	20	1.38

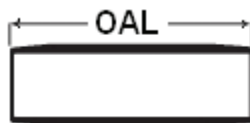
Nominal Pipe Size	B	C	D	E	O	X ⁽¹⁾	Nom. Wgt. Hub Only	Bolt Holes Diameter	
(mm)	(mm)	(mm)	(mm)	(mm)	(mm)	(mm)	(kg)	(No.)	(mm)
200	76	38	330	159	381	146	5.76	12	25
250	83	44	387	178	445	140	7.89	16	29
300	95	48	451	197	521	156	12.3	16	32
350	114	51	514	203	584	133	14.3	20	32
400	137	57	572	229	648	133	16.4	20	35
450	178	57	629	330	711	305	25	16	32
500	203	57	686	406	775	356	36	20	32
600	245	64	813	508	914	432	54	20	35

⁽¹⁾This is a nominal make-up dimension for drawing layout work only. Do not use for assembly dimensions.

NOTE: Standard bolt torque is 100 ft. lbs. (136 N-M) for all sizes.

RED THREAD II Nipples

▲ - Standard



Nominal Pipe Size In. (mm)	OAL			
	12"	16"	24"	36"
8	▲	▲	▲	▲
10	▲	▲	▲	▲
12	▲	▲	▲	▲
14	▲	▲	▲	▲
16	▲	▲	▲	▲

It is the policy of Fiber Glass Systems to improve its products continually. In accordance with that policy, the right is reserved to make changes in specifications, descriptions, and illustrative material contained in this bulletin as conditions warrant. Always cross-reference the bulletin date with the most current version listed at www.smithfibercast.com. The information contained herein is general in nature and is not intended to express any warranty of any type whatsoever, nor shall any be implied.

