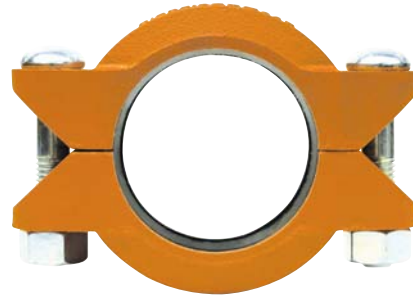


COUPLINGS

Figure 770 High Pressure Rigid Coupling

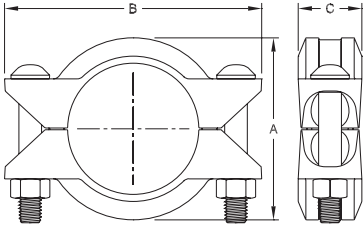
The Figure 770 High Pressure Rigid Coupling provides a rigid joint by firmly gripping along the full 360° circumference of the pipe grooves. The Figure 770 Rigid Coupling is a proven, dependable method of joining pipe, and is an economical alternative to welding, threading or using flanges. It is capable of pressures up to 1000 psi (69,0 bar) depending on pipe size and wall thickness.

Rigid couplings are recommended for low temperature and vacuum applications.



Tech Data: G138

**GROOVED
COUPLINGS
& FITTINGS**



Nominal Size Inches DN	Pipe O.D. Inches mm	Max. † Pressures psi bar	Max. End † Load lbs kN	Max. End* ‡ Gap Inches mm	Nominal Dimensions			Coupling Bolts		Approx. Weight lbs kg
					A Inches mm	B Inches mm	C Inches mm	Qty.	Size** Inches mm	
2 DN50	2.375 60,3	1000 69,0	4,430.1 19,71	0.14 3,5	3.53 89,7	5.72 145,3	1.88 47,8	2	5/8 x 2 3/4 M16 x 70	4.3 2,0
2½ DN65	2.875 73,0	1000 69,0	6,497.8 28,88	0.14 3,5	4.06 103,1	6.00 152,4	1.88 47,8	2	5/8 x 3 1/2 M16 x 89	5.0 2,3
3 DN80	3.500 88,9	1000 69,0	9,621.1 42,79	0.14 3,5	4.78 121,4	6.76 171,7	1.88 47,8	2	5/8 x 3 1/2 M16 x 89	5.3 2,4
4 DN100	4.500 114,3	1000 69,0	15,904.3 70,74	0.25 6,4	6.01 152,7	8.50 215,9	2.10 53,3	2	3/4 x 4 1/4 M20 x 108	7.7 3,5
6 DN150	6.625 168,3	1000 69,0	34,471.6 153,33	0.25 6,4	8.51 216,2	11.25 285,8	2.10 53,3	2	7/8 x 5 1/2 M22 x 140	16.2 7,3
8 DN200	8.625 219,1	800 55,1	46,741.0 207,90	0.25 6,4	10.93 277,6	13.75 349,3	2.60 66,0	2	1 x 5 1/2 M22 x 140	24.0 10,9
10 DN250	10.750 273,0	800 55,1	72,610.1 322,97	0.25 6,4	13.46 341,9	16.00 406,4	2.60 66,0	2	1 x 6 1/2 M24 x 165	32.0 14,5
12 DN300	12.750 323,9	800 55,1	102,141.0 454,32	0.25 6,4	15.52 394,2	18.00 457,2	2.60 66,0	2	1 x 6 1/2 M24 x 165	40.0 18,1

† Maximum pressure and end load are total from all loads based on standard weight steel pipe. Pressure ratings and end loads may differ on other pipe materials and/or wall thickness. Contact Tyco Fire & Building Products for details.

* Maximum available gap between pipe ends, minimum gap = 0.

** Gold color coded metric bolt sizes for DN50 - DN300 couplings available upon request.

‡ Maximum end gap is for cut grooved standard weight pipe. Values for roll grooved pipe will be 1/2 that of cut grooved.

Please refer to General Notes on page 17.