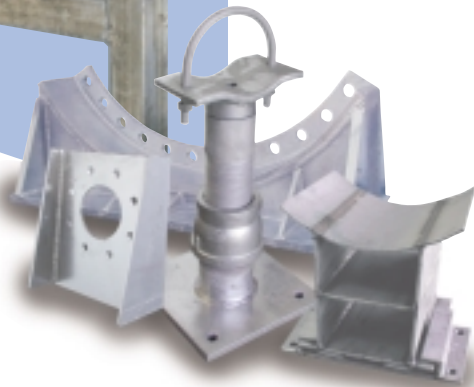


Ideas  
that provide  
support.

 **TOLCO**™

Pipe Supports,  
Pipe Attachments &  
Seismic Bracing Solutions



TOLCO™ is a brand of **NIBCO**®

# Pipe Support Systems

---



# TOLCO™

TOLCO™ has provided special fabricated pipe supports to the Mechanical piping industry for over 30 years. Our commitment to the high quality of our products and exceptional customer service has earned us a long list of loyal and satisfied customers. TOLCO's complete line of pipe hangers, TOL-Strut™ metal framing products and extensive seismic bracing system, position us to service the piping industry with a complete pipe support package second to none.

Our total concept service package includes: Estimating Support, Submittal Preparation, Mechanical/Structural Engineering and Custom Design/Fabrication. Through the main manufacturing plant located in Corona, California, along with our Houston, Texas facility, we are able to supply projects throughout the United States, Canada, Mexico, Central/South America and the Pacific Rim. We are proud partners in *supporting* your good work.

**TOLCO™ provides a unique service to contractors by offering many product lines that compliment our special fabrication.**

**TOLCO™ has the experience and capabilities to help our customers with ALL of their pipe support and seismic bracing needs.**

### Engineering

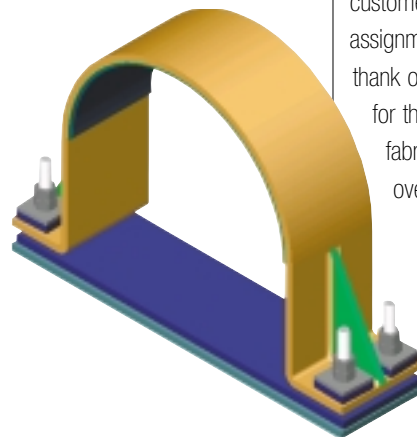
Our Engineering department features a complete CAD service with Auto Cad 2002 and Solid Works 3D imaging. We are capable of providing drawings on CD or sending drawings direct to your email address for better copies and faster service. With over 200 years of combined experience from our pipe support division staff and a library of thousands of drawings, we are in a position to offer assistance with your pipe support design needs. We offer a complete submittal package including pipe support location drawings, pipe support shop drawings with back up catalog information and complete seismic and dead load calculations provided with an engineer's stamp for any state in the union.

### Custom Fabrication

TOLCO offers an experienced team of certified welders operating 10 welding stations, 4 automatic saws, 3 burn tablestands, 6 iron workers including numerous other pieces of equipment. Our fabrication capabilities include many special alloys such as aluminum, type 304 & 316 stainless steel and chrome molybdenum steel (ASTM A-387 Grade 22). We work with many special finishes such as hot dip galvanizing, electro galvanizing and special painting systems with sandblasting per specifications. We specialize in adjustable stanchion supports to fit any centerline and outside diameter of pipe or flange, custom wall brackets, roller supports for bridge crossings, wall sleeves, special U-bolts, custom guides. TOLCO has the experience and capabilities to help our customers create, fabricate and design anything to support, hang or brace pipe.

### Estimate Support

We offer timely responses for quotes large and small, before or after the bid. We can also provide you with a complete takeoff of all pipe supports by drawing with unit prices. We will also provide a cost estimate for engineering required for most projects.



### Commitment to Excellence

Each and every project is assigned a project manager. When material is released our customers have a TOLCO representative with complete knowledge of the specific project eliminating any communication issues. The project manager follows through from the first release to the final inspection. We look forward to working with new customers on new and challenging assignments. We would like to thank our ongoing customer base for the opportunity to provide fabricated pipe supports for over 30 years.

Supporting  
the Flow.™



*Pipe Hangers • Pipe Supports  
TOL-Strut™ Channel • Seismic Bracing*

Every solution  
Begins with  
TOLCO™.

We're committed to supporting all of your flow control needs. We can provide creative solutions for your most challenging bracing and support applications. Solutions that make your installations easier, safer and more cost-effective.

For solutions that will support your flow-control applications, call on us. We're TOLCO, a product line committed to quality, service and innovation—  
Supporting the Flow.

**TOLCO™**

1375 Sampson Avenue  
Corona, California 92879  
USA

Phone: 951.737.5599  
Fax: 951.737.0330

**[www.tolco.com](http://www.tolco.com)**

**NIBCO INC.**

World Headquarters  
1516 Middlebury Street  
Elkhart, IN 46515-1167  
USA

Phone: 800.343.5455  
Fax: 800.541.3841

Technical Service:  
Phone: 888.446.4226

**[www.nibco.com](http://www.nibco.com)**