

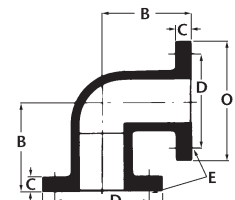
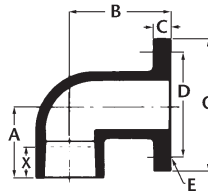
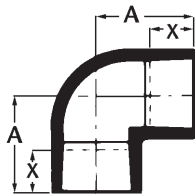
EPOXY FITTINGS DIMENSIONS

2"-16" GREEN THREAD® fittings may be used with GREEN THREAD and RED THREAD® II piping. Refer to "Chemical Resistance Guide," Bulletin No. E5615, for chemical recommendations.

2"-16" RED THREAD II fittings may be used on RED THREAD II piping.

1"-1½" fittings are available in GREEN THREAD products only.

90° ELBOWS⁽¹⁾ 1" and 16" parts are available in GREEN Thread only.



Nom. Pipe Size	A	B	C	D	E	O	X ⁽²⁾ W/GT Pipe	X ⁽²⁾ W/RT II Pipe	Nominal Wgt BxB	Nominal Wgt BxF	Nominal Wgt FxF	Cyclic/Steady Pressure
In.	In.	In.	In.	In.	In.	In.	In.	In.	Lbs	Lbs	Lbs	psig
1	2 ¾	3 ½	¾	3 ⅝	⅝D - 4 holes	4 ¼	1	-	0.4	1.0	1.7	300/450
1 ½	3 ⅝	4	¾	3 ⅝	⅝D - 4 holes	5	1 ⅜	-	0.6	1.5	2.4	300/450
2	3 ⅝	4 ½	¾	4 ¾	¾D - 4 holes	6	1 ⅝	1 ⅜	1.2	2.5	3.6	300/450
3	4 ⅝	5 ½	1 ⅜	6	¾D - 4 holes	7 ½	2 ⅝	1 ⅝	2.3	4.6	10.0	300/450
4	5 ⅝	6 ½	1 ⅝	7 ½	¾D - 8 holes	9	2	1 ½	3.3	6.4	15.9	150/225
6	6 ⅝	8	1 ½	9 ½	⅞D - 8 holes	11	2 ⅞	2 ⅜	7.2	11.8	15.9	150/225
8	11 ⅝	9	1 ¾	11 ¾	⅞D - 8 holes	13 ½	3 ⅜	4 ⅜	10.9	15.4	19.9	150/225
10	13 ⅝	11	2	14 ¼	1D - 12 holes	16	3 ⅞	4 ⅝	14.9	23.8	32.8	150/225
12	14	12	2 ¼	17	1D - 12 holes	19	4	4 ¼	22.6	38.3	54.0	150/225
14	19	14	2 ½	18 ¾	1 ⅛D - 12 holes	20 ¾	3 ⅝	3 ⅝	26.5	45.0	65.0	150/225
16	20 ¼	15	2 ½	21 ¼	1 ⅛D - 16 holes	23 ¼	3 ⅝	3 ⅝	45.0	65.0	108.0	150/225

mm	mm	mm	mm	mm	mm	mm	mm	mm	kg	kg	kg	MPa
25	70	89	19	79	16D - 4 holes	108	25	-	0.18	0.45	0.77	2.07/3.10
38	86	102	19	98	16D - 4 holes	127	35	-	0.27	0.68	1.09	2.07/3.10
51	86	114	19	121	19D - 4 holes	152	41	35	0.54	1.13	1.63	2.07/3.10
76	117	140	35	152	19D - 4 holes	190	54	41	1.04	2.09	4.54	2.07/3.10
102	130	165	35	190	19D - 8 holes	229	51	38	1.50	2.90	7.21	1.03/1.55
152	156	203	38	241	22D - 8 holes	279	73	60	3.27	5.35	7.21	1.03/1.55
203	295	229	44	298	22D - 8 holes	343	86	111	4.94	6.99	9.02	1.03/1.55
254	333	279	51	362	25D - 12 holes	406	98	104	6.76	10.80	14.88	1.03/1.55
305	356	305	57	432	25D - 12 holes	483	102	108	10.25	17.37	24.49	1.03/1.55
356	483	356	64	476	29D - 12 holes	527	92	92	12.02	20.41	29.48	1.03/1.55
406	514	381	64	540	29D - 16 holes	591	92	92	20.41	29.48	48.99	1.03/1.55

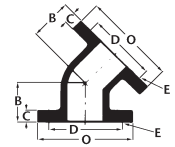
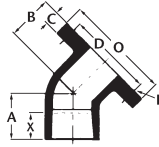
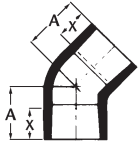
(1) "A" dimensions shown are for GREEN THREAD fittings. 1"-6" fittings are compression molded; 8"-16" fittings are filament wound.

(2) This is a nominal make-up dimension for drawing layout work only. Do not use for assembly dimensions.

(3) Flanges should be joined only to flat-faced flanges. See Smith Fibercast Manual No. E5000 for valve, bolt and gasket recommendations.

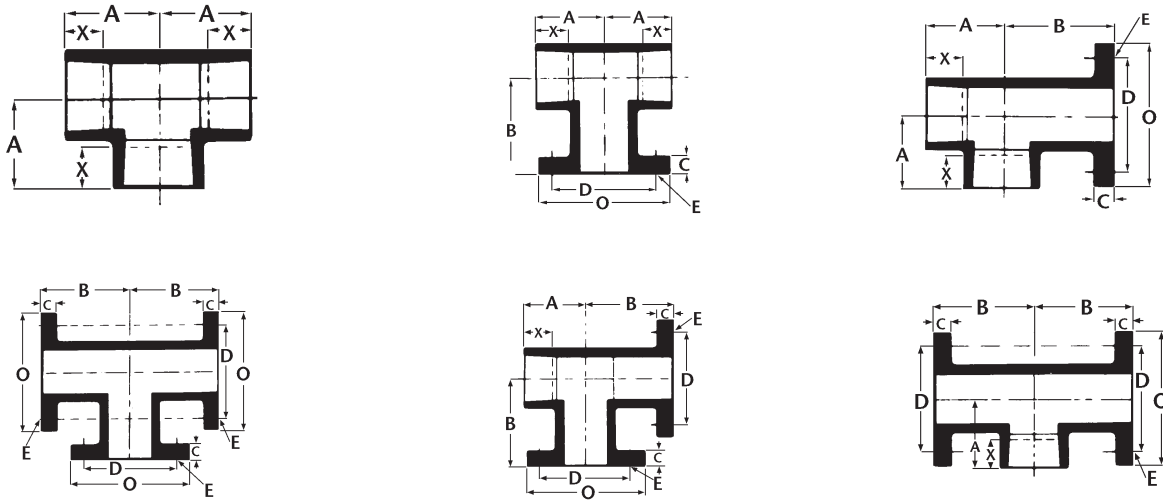
GT = GREEN THREAD RT II - RED THREAD II

45° ELBOWS⁽¹⁾ 1"-16" parts are available in GREEN THREAD only.



Nom. Pipe Size	A	B	C	D	E	O	X ⁽²⁾ W/GT Pipe	X ⁽²⁾ W/RT II Pipe	Nom. Weight BxB	Nom. Weight BxF	Nom. Weight FxF	Cyclic/ Steady Pressure
In.	In.	In.	In.	In.	In.	In.	In.	In.	Lbs.	Lbs.	Lbs.	psig
1	2 ³ / ₈	2	3/4	3 ¹ / ₈	5/8D-4 holes	4 ¹ / ₄	1	-	.3	.8	1.4	300/450
1 ¹ / ₂	2 ⁷ / ₈	2 ¹ / ₄	3/4	3 ⁷ / ₈	5/8D-4 holes	5	1 ¹ / ₈	-	.4	1.2	2.0	300/450
2	2 ⁵ / ₈	2 ¹ / ₂	3/4	4 ³ / ₄	3/4D-4 holes	6	1 ¹ / ₈	1 ¹ / ₈	.9	1.9	2.8	300/450
3	3 ³ / ₄	3	1 ¹ / ₈	6	3/4D-4 holes	7 ¹ / ₂	2 ¹ / ₈	1 ¹ / ₈	1.6	3.5	7.9	300/450
4	3 ⁷ / ₈	4	1 ¹ / ₈	7 ¹ / ₂	3/4D-8 holes	9	2	1 ¹ / ₂	2.4	5.1	13.1	150/225
6	4 ³ / ₈	5	1 ¹ / ₂	9 ¹ / ₂	7/8D-8 holes	11	2 ¹ / ₈	2 ³ / ₈	4.8	8.4	12.5	150/225
8	8 ¹ / ₈	5 ¹ / ₂	1 ¹ / ₄	11 ³ / ₄	7/8D-8 holes	13 ¹ / ₂	3 ³ / ₈	4 ³ / ₈	6.9	11.9	16.8	150/225
10	8 ⁵ / ₈	6 ¹ / ₂	2	14 ¹ / ₄	1D-12 holes	16	3 ⁷ / ₈	4 ¹ / ₈	8.9	18.5	28.2	150/225
12	9 ¹ / ₂	7 ¹ / ₂	2 ¹ / ₄	17	1D-12 holes	19	4	4 ¹ / ₄	14.0	32.6	47.2	150/225
14	12 ¹ / ₂	7 ¹ / ₂	2 ¹ / ₂	18 ³ / ₄	1 1/8D-12 holes	20 ³ / ₄	3 ⁵ / ₈	3 ⁵ / ₈	17.0	46.0	73.0	150/225
16	13 ³ / ₄	8	2 ¹ / ₂	21 ¹ / ₄	1 1/8D-16 holes	23 ¹ / ₄	3 ⁵ / ₈	3 ⁵ / ₈	25.0	56.0	84.0	150/225
mm	mm	mm	mm	mm	mm	mm	mm	mm	kg	kg	kg	MPa
25	60	51	19	79	16D-4 holes	108	25	-	.14	0.36	0.64	2.07/3.10
38	73	57	19	98	16D-4 holes	127	35	-	.18	0.54	0.91	2.07/3.10
51	67	64	19	121	19D-4 holes	152	41	35	.41	0.86	1.27	2.07/3.10
76	95	76	35	152	19D-4 holes	190	54	41	.73	1.59	3.58	2.07/3.10
102	98	102	35	190	19D-8 holes	229	51	38	1.09	2.31	5.94	1.03/1.55
152	111	127	38	241	22D-8 holes	279	73	60	2.18	3.81	5.67	1.03/1.55
203	206	140	44	298	22D-8 holes	343	86	111	3.11	5.40	7.62	1.03/1.55
254	219	165	51	362	25D-12 holes	406	98	105	4.04	8.39	12.79	1.03/1.55
305	241	190	57	432	25D- 12 holes	483	102	108	6.35	14.78	21.41	1.03/1.55
356	318	191	64	476	29D-12 holes	527	92	92	7.71	20.87	33.11	1.03/1.55
406	337	203	64	540	29D-16 holes	591	92	92	11.3	25.40	38.10	1.03/1.55

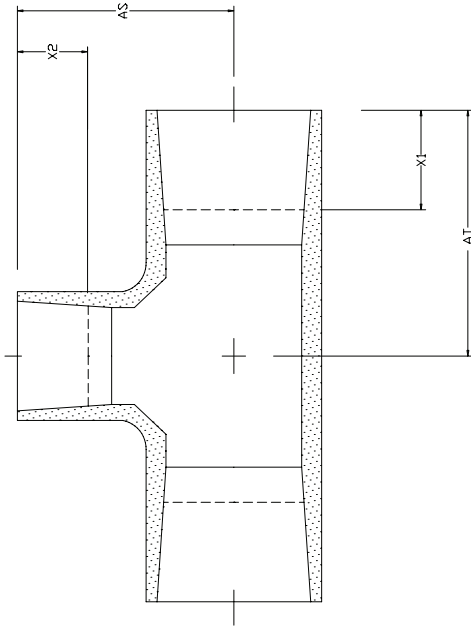
TEES(1) 1"-16" parts are available in GREEN THREAD only.



Nom. Pipe Size	A	B	C	D	E	O	X(2) W/GT Pipe	X(2) W/RT II Pipe	Nom. Wgt 3B	Nom. Wgt 1F	Nom. Wgt 2F	Nom. Wgt 3F	Cyclic/ Steady Pressure
In.	In.	In.	In.	In.	In.	In.	In.	In.	Lbs.	Lbs.	Lbs.	Lbs.	psig
1	2¾	3½	¾	3⅞	⅝D - 4 holes	4¼	1	-	.5	1.1	1.8	2.5	300/450
1 ½	3⅝	4	¾	3⅞	⅝D - 4 holes	5	1⅝	-	.9	1.9	2.8	3.6	300/450
2	3⅝	4½	¾	4¾	¾D - 4 holes	6	1⅝	1⅝	1.9	3.1	4.8	5.5	300/450
3	4	5	1⅝	6	¾D - 4 holes	7½	2⅝	1⅝	3.6	5.8	8.0	14.5	300/450
4	5⅝	6½	1⅝	7½	¾D - 8 holes	9	2	1½	4.9	8.0	11.3	22.7	150/225
6	6⅞	8	1½	9½	⅞D - 8 holes	11	2⅝	2⅝	10.1	14.3	19.0	22.3	150/225
8	11⅝	9	1¾	11¾	⅞D - 8 holes	13½	3⅝	4⅝	16.1	20.4	24.6	28.9	150/225
10	13	11	2	14¼	1D - 12 holes	16	3⅝	4⅞	26.2	34.1	42.0	49.8	150/225
12	14	12	2¼	17	1D - 12 holes	19	4	4¼	31.8	47.1	62.5	77.8	150/225
14	19	14	2½	18¾	1 ⅛D - 12 holes	20¾	3⅝	3⅝	52.0	75.5	99.5	127.0	150/225
16	20¼	15	2½	21¼	1 ⅛D - 16 holes	23¼	3⅝	3⅝	68.0	107.0	135.0	170.0	150/225

mm	mm	mm	mm	mm	mm	mm	mm	mm	kg	kg	kg	kg	MPa
25	70	89	19	79	16D-4 holes	108	25	-	0.2	0.5	0.8	1.1	2.07/3.10
38	86	102	19	98	16D-4 holes	127	35	-	0.4	0.9	1.3	1.6	2.07/3.10
51	86	114	19	121	19D-4 holes	152	41	35	0.9	1.4	2.2	2.5	2.07/3.10
76	102	127	35	152	19D-4 holes	190	54	41	1.6	2.6	3.6	6.6	2.07/3.10
102	130	165	35	190	19D-8 holes	229	51	38	2.2	3.6	5.1	10.3	1.03/1.55
152	156	203	38	241	22D-8 holes	279	73	60	4.6	6.5	8.6	10.1	1.03/1.55
203	295	229	44	298	22D-8 holes	343	86	111	7.3	9.3	11.2	13.1	1.03/1.55
254	330	279	51	362	25D-12 holes	406	98	105	11.9	15.5	19.1	22.6	1.03/1.55
305	356	305	57	432	25D-12 holes	483	102	108	14.4	21.4	28.3	35.3	1.03/1.55
356	483	356	64	476	29D-12 holes	527	92	92	23.6	34.2	45.1	57.6	1.03/1.55
406	514	381	64	540	29D-16 holes	591	92	92	30.8	48.5	61.2	77.1	1.03/1.55

REDUCING TEES

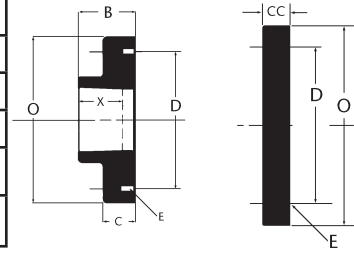


Nom. Size	AT		X ₁ W/GT Pipe ⁽¹⁾		X ₁ W/RTII Pipe ⁽¹⁾		AS	X ₂ W/GT Pipe ⁽¹⁾		X ₂ W/RTII Pipe ⁽¹⁾		Nom. Wgt.	Steady Pressure	Nom. Size	AT	X ₁ W/GT Pipe ⁽¹⁾	X ₁ W/RTII Pipe ⁽¹⁾	AS	X ₂ W/GT Pipe ⁽¹⁾	X ₂ W/RTII Pipe ⁽¹⁾	Nom. Wgt.	Steady Pressure
	In.	mm	In.	mm	In.	mm		In.	mm	In.	mm											
8x6	11 ⁵ / ₈	295	3 ⁵ / ₈	92	4 ¹ / ₂	114	10 ¹ / ₄	27 ¹ / ₈	2	2 ³ / ₈	23	225	203x152	295	92	114	260	73	60	10.4	1.55	
8x4	11 ¹ / ₂	295	3 ⁵ / ₈	92	4 ¹ / ₂	114	10 ¹ / ₄	2	1 ¹ / ₂	1 ¹ / ₂	21	225	203x102	295	92	114	260	51	38	9.5	1.55	
8x3	11 ⁵ / ₈	295	3 ⁵ / ₈	92	4 ¹ / ₂	114	9 ⁷ / ₈	2 ¹ / ₈	2 ¹ / ₈	1 ⁵ / ₈	20	225	203x76	295	92	114	251	54	41	9.1	1.55	
8x2	11 ¹ / ₂	295	3 ⁵ / ₈	92	4 ¹ / ₂	114	9 ¹³ / ₁₆	1 ⁵ / ₈	1 ⁵ / ₈	1 ⁵ / ₈	19	225	203x51	295	92	114	249	41	35	8.6	1.55	
10x8	13 ¹ / ₁₆	332	3 ⁷ / ₈	98	4 ¹ / ₈	105	13 ⁵ / ₈	3 ⁵ / ₈	3 ⁵ / ₈	4 ¹ / ₂	39	225	254x203	332	98	105	346	92	114	17.7	1.55	
10x6	13 ¹ / ₁₆	332	3 ⁷ / ₈	98	4 ¹ / ₈	105	11 ³ / ₄	2 ⁷ / ₈	2 ⁷ / ₈	2 ⁵ / ₈	36	225	254x152	332	98	105	298	73	60	16.3	1.55	
10x4	13 ¹ / ₁₆	332	3 ⁷ / ₈	98	4 ¹ / ₈	105	11 ³ / ₄	2	1 ¹ / ₂	1 ¹ / ₂	33	225	254x102	332	98	105	298	51	38	14.9	1.55	
10x3	13 ¹ / ₁₆	332	3 ⁷ / ₈	98	4 ¹ / ₈	105	11 ³ / ₄	2 ¹ / ₈	2 ¹ / ₈	1 ⁵ / ₈	32	225	254x76	332	98	105	289	54	41	14.5	1.55	
12x10	13 ¹⁵ / ₁₆	354	4	102	4 ³ / ₈	111	15 ¹ / ₁₆	3 ⁷ / ₈	3 ⁷ / ₈	4 ¹ / ₈	51	225	305x254	354	102	111	383	98	105	23.1	1.55	
12x8	13 ¹⁵ / ₁₆	354	4	102	4 ³ / ₈	111	15 ¹ / ₁₆	3 ⁵ / ₈	3 ⁵ / ₈	4 ¹ / ₂	48	225	305x203	354	102	111	383	92	114	21.8	1.55	
12x6	13 ¹⁵ / ₁₆	354	4	102	4 ³ / ₈	111	13 ³ / ₄	2 ⁷ / ₈	2 ⁷ / ₈	2 ⁵ / ₈	45	225	305x152	354	102	111	337	73	60	20.4	1.55	
12x4	13 ¹⁵ / ₁₆	354	4	102	4 ³ / ₈	111	13 ³ / ₄	2	1 ¹ / ₂	1 ¹ / ₂	42	225	305x102	354	102	111	337	51	38	19.1	1.55	
14x12	19 ¹ / ₁₆	484	6 ³ / ₈	162	6 ¹ / ₂	165	15 ¹⁵ / ₁₆	4	4 ¹ / ₂	4 ¹ / ₂	67	225	356x305	484	162	165	405	102	114	30.4	1.55	
14x10	19 ¹ / ₁₆	484	6 ³ / ₈	162	6 ¹ / ₂	165	15 ⁹ / ₁₆	3 ⁷ / ₈	3 ⁷ / ₈	4 ¹ / ₈	64	225	356x254	484	162	165	395	98	105	29.0	1.55	
14x8	19 ¹ / ₁₆	484	6 ³ / ₈	162	6 ¹ / ₂	165	15 ⁵ / ₈	3 ⁵ / ₈	3 ⁵ / ₈	4 ¹ / ₂	60	225	356x203	484	162	165	390	92	114	27.2	1.55	
14x6	19 ¹ / ₁₆	484	6 ³ / ₈	162	6 ¹ / ₂	165	13 ³ / ₄	2 ⁷ / ₈	2 ⁷ / ₈	2 ⁵ / ₈	57	225	356x152	484	162	165	349	73	60	25.9	1.55	
16x14	20 ¹ / ₄	514	6 ⁵ / ₈	168	6 ⁵ / ₈	168	19 ¹ / ₂	6 ³ / ₈	6 ³ / ₈	6 ¹ / ₂	103	225	406x356	514	168	168	495	162	165	46.7	1.55	
16x12	20 ¹ / ₄	514	6 ⁵ / ₈	168	6 ⁵ / ₈	168	16 ¹⁵ / ₁₆	4	4 ¹ / ₂	4 ¹ / ₂	99	225	406x305	514	168	168	430	102	114	44.9	1.55	
16x10	20 ¹ / ₄	514	6 ⁵ / ₈	168	6 ⁵ / ₈	168	16 ⁵ / ₈	3 ⁷ / ₈	3 ⁷ / ₈	4 ¹ / ₈	94	225	406x254	514	168	168	422	98	105	42.6	1.55	
16x8	20 ¹ / ₄	514	6 ⁵ / ₈	168	6 ⁵ / ₈	168	16 ⁵ / ₈	3 ⁵ / ₈	3 ⁵ / ₈	4 ¹ / ₂	90	225	406x203	514	168	168	422	92	114	40.8	1.55	

FLANGES

All flanges meet ANSI B16.5 Class 150 Bolt Hole Standards. The following flanges are available as standard parts:

Flanges	1"-12" GREEN THREAD	Compression Molded (M) or Filament Wound (FW)
	2"-6" RED THREAD II	Filament Wound (FW)
	14"-16" RED THREAD II or GREEN THREAD	Filament Wound (FW)
Blind Flanges:	1"-12" GREEN THREAD	Compression Molded (M)
	14"-16" RED THREAD II or GREEN THREAD	Contact Molded (M)



Nom. Pipe Size	B	C	CC ⁽⁴⁾	D	E	O	X ⁽²⁾ for GT Pipe			X ⁽²⁾ for RTII Pipe			Bolt Torque ⁽³⁾		Nominal Wgt-Flange		Nom. Wgt. Blind Flg.	Cyclic/Steady Pressure	
							M	FW	In	M	FW	In	Min.	Max.	M	FW		Lbs	Lbs
1	1 3/4	3/4	3/4	3 1/8	5/8 D - 4 holes	4 1/4	1	1	-	-	20	25	.6	.8	300/450	300/450	200/300		
1 1/2	1 3/4	3/4	3/4	3 7/8	5/8 D - 4 holes	5	1 3/8	1 3/8	-	-	20	25	.9	.9	300/450	300/450	200/300		
2	2 1/4	3/4	3/4	4 3/4	3/4 D - 4 holes	6	2	1 5/8	1 1/2	2 1/8	25	30	1.3	1.3	300/450	300/450 ⁽⁶⁾	200/300		
3	2 5/8	1 3/8	1	6	3/4 D - 4 holes	7 1/2	2 3/8	2 1/8	1 7/8	2 3/8	25	30	2.6	3.0	300/450	200/300 ⁽⁶⁾	200/300		
4 ⁽⁵⁾	2 5/8	1 3/8	1	7 1/2	3/4 D - 8 holes	9	2 3/8	2 1/2	1 7/8	3 3/8	25	30	3.6	4.0	150/225	150/225 ⁽⁶⁾	100/150		
6 ⁽⁵⁾	3	1 1/2	1 1/8	9 1/2	7/8 D - 8 holes	11	2 1/2	2 5/8	2	3 1/2	25	30	4.4	6.6	150/225	150/225 ⁽⁶⁾	100/150		
8	4	1 3/4	1 1/8	11 3/4	7/8 D - 8 holes	13 1/2	3	2 7/8	3 1/2	3 7/8	30	100	9.3	11.0	150/225	150/225	90/135		
10	4 3/4	2	1 1/4	14 1/4	1 D - 12 holes	16	3 3/4	3 1/4	4 1/4	3 1/2	80	100	16.0	15.8	150/225	150/225	65/95		
12	5	2 1/4	1 1/4	17	1 D - 12 holes	19	4	3 5/8	4 1/2	3 7/8	80	100	24.0	25.8	150/225	150/225	45/65		
14	3 1/8	2 1/2	1 7/8	18 3/4	1 1/8 D - 12 holes	20 3/4	-	3	-	3	80	100	-	30.7	-	100/150			
16	3 1/8	2 1/2	2 1/4	21 1/4	1 1/8 D - 16 holes	23 1/4	-	3	-	3	80	100	-	37.0	-	100/150			

mm	mm	mm	mm	mm	mm	mm	mm ⁽²⁾	mm ⁽²⁾	mm ⁽²⁾	mm ⁽²⁾	mm ²	N-m ⁽³⁾	N-m ⁽³⁾	kg	kg	MPa	MPa
25	44	19	79	108	16D - 4 holes	108	25	25	-	-	27	34	.27	.36	2.07/3.10	2.07/3.10	1.38/2.07
38	44	19	98	127	16D - 4 holes	127	35	35	-	-	27	34	.41	.41	2.07/3.10	2.07/3.10	1.38/2.07
51	57	19	121	152	19D - 4 holes	152	51	41	38	54	34	41	.59	.59	2.07/3.10	2.07/3.10	1.38/2.07
76	67	35	152	191	19D - 4 holes	191	60	54	48	60	34	41	1.18	1.54	2.07/3.10	1.38/2.07 ⁽⁶⁾	1.38/2.07
102 ⁽⁶⁾	67	35	191	229	19D - 8 holes	229	60	64	48	86	34	41	1.63	2.22	1.03/1.55	1.03/1.55 ⁽⁶⁾	0.69/1.03
152 ⁽⁶⁾	76	38	241	279	22D - 8 holes	279	64	67	51	89	34	41	2.00	2.95	1.03/1.55	1.03/1.55 ⁽⁶⁾	0.69/1.03
203	102	44	298	343	22D - 8 holes	343	76	73	89	98	41	135	4.22	4.99	1.03/1.55	1.03/1.55	0.62/0.93
254	121	51	362	406	25D - 12 holes	406	95	83	108	89	108	135	7.26	7.17	1.03/1.55	1.03/1.55	0.45/0.65
305	127	57	432	483	25D - 12 holes	483	102	92	114	98	108	135	10.89	11.70	1.03/1.55	1.03/1.55	0.31/0.45
356	79	64	476	527	29D - 12 holes	527	-	76	-	76	108	135	-	13.93	-	1.03/1.55	0.69/1.03
406	79	64	540	594	29D - 16 holes	594	-	76	-	76	108	135	-	16.78	-	1.03/1.55	0.69/1.03

HD Flange Dimensions			
Size	B	C	
In	In	In	In
2	3	2 3/4	
3	3 1/4	3	
4	4 3/4	3 1/2	
6	4 1/4	4	

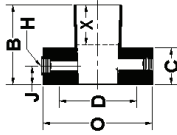
⁽⁵⁾The "B" dimensions shown are for molded GREEN THREAD flanges. The "B" dimensions for standard filament wound flanges are 3/2" & 3 3/4" for 4 & 6 inch flanges, respectively.
⁽⁶⁾Heavy duty flanges are available 300/450 psig (2.07/3.10 MPa) pressure ratings. Dimensions are shown in the HD Flange Dimensions Table.

⁽³⁾Flanges should be joined only to flat-faced flanges. See FGS Smith Fibercast installation instructions for valve, bolt, and gasket recommendations.
⁽⁴⁾Steel back-up plates must be used to achieve pressure ratings equivalent to the pipe.

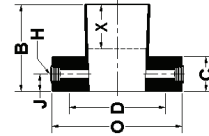
⁽¹⁾"A" dimensions shown are for GREEN THREAD fittings. The 1"-6" fittings are compression molded and 8"-16" fittings are filament wound.
⁽²⁾This is a nominal make-up dimension for drawing layout work only. Do not use for assembly dimensions.

ORIFICE FLANGES (2"-8" parts are available in GREEN THREAD only)

2" ORIFICE FLANGE



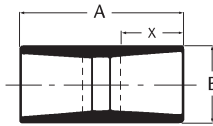
3"-8" ORIFICE FLANGE



Nom. Pipe Size	B	C	D	E	H	J	O	X ⁽¹⁾ W/ GT Pipe	X ⁽¹⁾ W/RTII Pipe	Recom. Torquing of Flanges ⁽²⁾		Nom. Wt. Lbs	Cyclic/Steady Pressure psig
										To Seal	Max.		
2	4¼	2	4¾	¾D - 4 holes	½ NPT	1	6	1⅝	1⅝	25	30	3.6	300/450
3	5	2	6	¾D - 4 holes	½ NPT	1	7½	2⅝	1⅝	25	30	5.3	300/450
4	5	2	7½	¾D - 8 holes	½ NPT	1	9	2	1½	25	30	6.6	150/225
6	6	2	9½	⅞D - 8 holes	½ NPT	1	11	2⅞	2⅞	25	30	8.8	150/225
8	8¾	2	11¼	⅞D - 8 holes	½ NPT	1	13½	3⅝	4⅝	30	100	14.5	150/225

mm	mm	mm	mm	mm	mm	mm	mm	mm ⁽¹⁾	mm ⁽¹⁾	N-m ⁽²⁾	N-m ⁽²⁾	kg	MPa
51	108	51	121	19D - 4 holes	12.7 NPT	25	152	41	35	34	41	1.6	2.07/3.10
76	127	51	152	19D - 4 holes	12.7 NPT	25	191	54	41	34	41	2.4	2.07/3.10
102	127	51	191	19D - 8 holes	12.7 NPT	25	229	51	38	34	41	3.0	1.03/1.55
152	152	51	241	22D - 8 holes	12.7 NPT	25	279	73	60	34	41	4.0	1.03/1355
203	222	51	298	22D - 8 holes	12.7 NPT	25	343	86	111	41	135	6.6	1.03/1.55

SLEEVE COUPLINGS



GREEN THREAD Product

Nom. Pipe Size	A	B	X ⁽¹⁾	Nominal Weight	Cyclic/Steady Pressure
In.	In.	In.	In.	Lbs.	psig
1	2¾	1½	1	.1	300/450
1½	3¼	2	1⅝	.1	300/450
2	4⅞	2⅝	1⅝	.4	300/450
3	5	3¾	2⅝	.8	300/450
4	5	4¾	2	.9	150/225
6	7	6⅞	2⅝	1.9	150/225
8	10	9	2⅝	3.4	150/225
10	10½	11	3¼	5.2	150/225
12	11	13⅞	3⅝	7.5	150/225
14	12½	15	4⅝	11.2	150/225
16	13	17⅞	4½	16.0	150/225

mm	mm	mm	mm ⁽¹⁾	kg	MPa
25	70	38	27	0.05	2.07/3.10
38	83	52	35	0.05	2.07/3.10
51	124	67	41	0.18	2.07/3.10
76	127	95	54	0.36	2.07/3.10
102	127	121	51	0.41	1.03/1.55
152	178	175	73	0.86	1.03/1.55
203	254	229	73	1.54	1.03/1.55
254	268	279	83	2.36	1.03/1.55
305	279	333	92	3.40	1.03/1.55
356	318	381	111	5.08	1.03/1.55
406	330	435	114	7.26	1.03/1.55

RED THREAD II Product

Nom. Pipe Size	A	B	X ⁽¹⁾	Nominal Weight	Cyclic/Steady Pressure
In.	In.	In.	In.	Lbs.	psig
1	-	-	-	-	-
1½	-	-	-	-	-
2	6	2⅝	2⅝	.4	300/450
3	6	3¾	2⅝	.8	300/450
4	7	4⅞	2⅝	1.4	300/450
6	8⅞	7⅞	3⅝	2.8	300/450
8	10	9	3⅝	3.3	150/225
10	10½	11⅞	3½	4.7	150/225
12	11	13⅞	3⅝	6.8	150/225
14	12½	15	4⅝	11.2	150/225
16	13	17⅞	4½	16.0	150/225

In.	mm	mm	mm ⁽¹⁾	kg	MPa
1	-	-	-	-	-
1½	-	-	-	-	-
2	152	67	54	0.18	2.07/3.10
3	152	95	60	0.36	2.07/3.10
4	178	124	73	0.64	2.07/3.10
6	213	181	86	1.27	2.07/3.10
8	254	229	98	1.50	1.03/1.55
10	268	283	89	2.13	1.03/1.55
12	279	333	98	3.08	1.03/1.55
14	318	381	111	5.08	1.03/1.55
16	330	435	114	7.26	1.03/1.55

NIPPLES

GT - GREEN THREAD
 RT - RED THREAD
 □ - STANDARD AVAILABLE SIZE



Size	Close		4"		6"		8"		10"		12"		16"		24"		36"	
	In.	GT	RT	GT	RT	GT	RT	GT	RT	GT	RT	GT	RT	GT	RT	GT	RT	
1	2½	-	-	-	□	-	□	-	-	-	-	-	-	-	-	-	-	
1½	3⅝	-	-	-	□	-	□	-	-	-	-	-	-	-	-	-	-	
2	4½	□	-	□ ⁽³⁾	□	□	□	□	-	□	-	□	-	-	-	-	-	
3	5⅝	5⅝	-	-	□	□ ⁽⁴⁾	□	□	-	□	-	□	-	-	-	-	-	
4	5¾	5¾	-	-	□	□	□	□	-	□	-	□	-	-	-	-	-	
6	6⅝	6⅝	-	-	□ ⁽⁴⁾	□ ⁽⁵⁾	□	□	-	□	□	□	-	-	-	-	-	
8	8⅝	9⅝	-	-	-	-	-	-	-	-	□	□	□	□	-	□	-	
10	9¾	9¾	-	-	-	-	-	-	-	-	□	□	□	□	-	□	-	
12	9¾	10¼	-	-	-	-	-	-	-	-	□	□	□	□	-	□	-	
14	-	□	-	-	-	-	-	-	-	-	-	-	□	□	-	□	-	
16	-	-	-	-	-	-	-	-	-	-	-	-	□	□	-	□	-	

⁽¹⁾This is a nominal make-up dimension for drawing layout work only. Do not use for assembly dimensions.
⁽²⁾Flanges should be joined only to flat-faced flanges. See Smith Fibercast Installation Instructions for valve, bolt, and gasket recommendations.

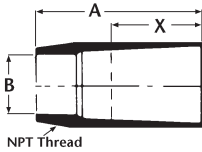
⁽³⁾Actual length 4¼"
⁽⁴⁾Actual length 6¼"
⁽⁵⁾Actual length 6⅝"



END CAPS (Parts are available in GREEN THREAD only.)

Nom. Pipe Size	A	X ⁽¹⁾ With GT Pipe	X ⁽¹⁾ With RTII Pipe	Nominal Wgt.	Cyclic/ Steady Pressure	A		X ⁽¹⁾ With GT Pipe	X ⁽¹⁾ With RTII Pipe	Nominal Wgt.	Cyclic/ Steady Pressure
						mm	mm				
In.	In.	In.	In.	Lbs.	psig	mm	mm	mm	kg	MPA	
1	2¾	1	-	.3	300/450	70	25	-	0.14	2.07/3.10	
1½	2⅝	1⅝	-	.6	300/450	67	35	-	0.27	2.07/3.10	
2	2¾	1⅝	1⅝	1.4	300/450	70	41	35	0.64	2.07/3.10	
3	3¼	2⅝	1⅝	1.9	300/450	83	54	41	0.86	2.07/3.10	
4	3¾	2	1½	3.0	150/225	95	51	38	1.36	1.03/1.55	
6	7	2⅝	2¾	4.2	150/225	178	73	60	1.91	1.03/1.55	
8	8¾	3⅝	4¾	5.6	150/225	222	86	111	2.54	1.03/1.55	
10	9¾	3⅝	4⅝	8.4	150/225	251	98	105	3.81	1.03/1.55	
12	11	4	4¼	12.5	150/225	279	102	108	5.67	1.03/1.55	
14	12	3⅝	3⅝	15.6	150/225	305	92	92	7.08	1.03/1.55	
16	13	3⅝	3⅝	19.5	150/225	330	92	92	8.85	1.03/1.55	

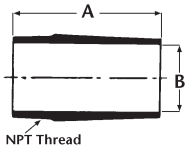
ADAPTERS (1" and 1½" parts are available in GREEN THREAD only; 2"-8" parts are available in GREEN THREAD or RED THREAD II; 10" and 12" parts are available in RED THREAD II only.)



BELL x MALE

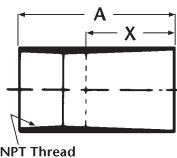
⁽¹⁾This is a nominal make-up dimension for drawing layout work only. Do not use for assembly dimensions.
⁽²⁾Do not pressurize over 1½ times the maximum operating pressure

Nom. Pipe Size	A	B	X ⁽¹⁾ With GT Pipe	X ⁽¹⁾ With RTII Pipe	Nom. Wgt. GT	Nom. Wgt. RT II	Cyclic/ Steady Pressure	Nom. Pipe Size	A	B	X ⁽¹⁾ With GT Pipe	X ⁽¹⁾ With RT II Pipe	Nom. Wgt. GT	Nom. Wt. RTII	Cyclic/ Steady Pressure
In.	In.	In.	In.	In.	Lbs.	Lbs.	psig	mm	mm	mm	mm	mm	kg	kg	MPa
1	3½	1	1	-	.1	-	300/450	25	89	25	27	-	0.05	-	2.07/3.10
1½	3¾	1½	1⅝	-	.3	-	300/450	38	99	38	35	-	0.14	-	2.07/3.10
2	4¼	2	1⅞	1⅞	.4	.3	300/450	51	108	51	41	35	0.18	0.14	2.07/3.10
3	5½	3	2⅞	1⅞	.9	.6	200/300	76	140	76	54	41	0.41	0.27	1.38/2.07
4	5½	4	2	1½	1.6	1.0	150/225	102	140	102	51	38	0.73	0.45	1.03/1.55
6	6	6	2⅞	2⅞	2.6	1.8	150/225	152	152	152	73	60	1.18	0.82	1.03/1.55
8	9¼	8	2⅞	3⅞	7.2	6.6	150/225	203	235	203	73	98	3.27	2.99	1.03/1.55



SPIGOT x MALE

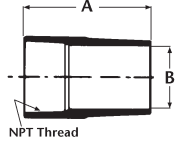
Nom. Pipe Size	A	B	X ⁽¹⁾ With GT Pipe	X ⁽¹⁾ With RTII Pipe	Nom. Wgt. GT	Nom. Wgt. RT II	Cyclic/ Steady Pressure	Nom. Pipe Size	A	B	X ⁽¹⁾ With GT Pipe	X ⁽¹⁾ With RT II Pipe	Nom. Wgt. GT	Nom. Wt. RTII	Cyclic/ Steady Pressure
In.	In.	In.	In.	In.	Lbs.	Lbs.	psig	mm	mm	mm	mm	mm	kg	kg	MPa
1	2⅞	1	-	-	.1	-	300/450	25	67	25	-	-	0.05	-	2.07/3.10
1½	2¾	1¼	-	-	.3	-	300/450	38	70	38	-	-	0.14	-	2.07/3.10
2	3⅞	2	-	-	.4	.3	300/450	51	92	51	-	-	0.18	.1	2.07/3.10
3	4⅞	3	-	-	.9	.6	200/300	76	117	76	-	-	0.41	.2	1.38/2.07
4	4⅞	4	-	-	1.1	1.0	150/225	102	124	102	-	-	0.50	.4	1.03/1.55
6	6⅞	6	-	-	2.6	2.0	150/225	152	175	152	-	-	1.18	.9	1.03/1.55
8	8	8	-	-	5.6	4.9	150/225	203	203	203	-	-	2.54	2.2	1.03/1.55



BELL X FEMALE

Nom. Pipe Size	A	B	X ⁽¹⁾ With GT Pipe	X ⁽¹⁾ With RTII Pipe	Nom. Wgt. GT	Nom. Wgt. RT II	Cyclic/ Steady Pressure	Nom. Pipe Size	A	B	X ⁽¹⁾ With GT Pipe	X ⁽¹⁾ With RT II Pipe	Nom. Wgt. GT	Nom. Wt. RTII	Cyclic/ Steady Pressure
In.	In.	In.	In.	In.	Lbs.	Lbs.	psig	mm	mm	mm	mm	mm	kg	kg	MPa
1	2⅞	-	1	-	.1	-	300/450	25	67	-	27	-	0.05	-	2.07/3.10
1½	2¾	-	1⅞	-	.3	-	300/450	38	70	-	35	-	0.14	-	2.07/3.10
2	3½	-	1⅞	1⅞	.6	.3	300/450	51	89	-	41	35	0.27	.1	2.07/3.10
3	4½	-	2⅞	1⅞	.6	.5	200/300	76	114	-	54	41	0.27	.2	1.38/2.07
4	4½	-	2	1½	.6	.5	150/225	102	114	-	51	38	0.27	.2	1.03/1.55
6	5½	-	2⅞	2⅞	1.9	1.3	150/225	152	140	-	73	60	0.86	.6	1.03/1.55
8	7	-	2⅞	3⅞	5.1	3.5	100/150	203	178	-	73	98	2.31	1.6	0.69/1.03

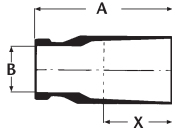
ADAPTERS (1" and 1½" parts are available in GREEN THREAD only; 2"-8" parts are available in GREEN THREAD or RED THREAD II; 10" and 12" parts are available in RED THREAD II only.)



SPIGOT x FEMALE

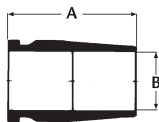
(1) This is a nominal make-up dimension for drawing layout work only. Do not use for assembly dimensions.
 (2) Do not pressurize over 1½ times the maximum operating pressure

Nom. Pipe Size	A	B	X ⁽¹⁾ With GT Pipe	X ⁽¹⁾ With RTII Pipe	Nom. Wgt. GT	Nom. Wgt. RT II	Cyclic/ Steady Pressure	Nom. Pipe Size	A	B	X ⁽¹⁾ With GT Pipe	X ⁽¹⁾ With RT II Pipe	Nom. Wgt. GT	Nom. Wt. RTII	Cyclic/ Steady Pressure
In.	In.	In.	In.	In.	Lbs.	Lbs.	psig	mm	mm	mm	mm	mm	kg	kg	MPa
1	3 ⁵ / ₈	1	-	-	.2	-	300/450	25	92	25	-	-	0.09	-	2.07/3.10
1½	4	1½	-	-	.3	-	300/450	38	102	38	-	-	0.14	-	2.07/3.10
2	3 ⁷ / ₈	2	-	-	.4	.3	300/450	51	98	51	-	-	0.18	0.14	2.07/3.10
3	4 ³ / ₄	3 ³ / ₈	-	-	.8	.5	200/300	76	121	76	-	-	0.36	0.23	1.38/2.07
4	4 ⁷ / ₈	4 ¹ / ₈	-	-	1.0	.6	150/225	102	124	102	-	-	0.45	0.27	1.03/1.55
6	6 ³ / ₄	6	-	-	3.4	2.6	150/225	152	171	152	-	-	1.54	1.18	1.03/1.55
8	10	8	-	-	8.0	7.1	100/150	203	254	203	-	-	3.63	3.22	0.69/1.03



BELL X GROOVED⁽²⁾

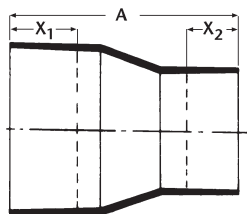
Nom. Pipe Size	A	B	X ⁽¹⁾ With GT Pipe	X ⁽¹⁾ With RTII Pipe	Nom. Wgt. GT	Nom. Wgt. RT II	Cyclic/ Steady Pressure	Nom. Pipe Size	A	B	X ⁽¹⁾ With GT Pipe	X ⁽¹⁾ With RT II Pipe	Nom. Wgt. GT	Nom. Wt. RTII	Cyclic/ Steady Pressure
In.	In.	In.	In.	In.	Lbs.	Lbs.	psig	mm	mm	mm	mm	mm	kg	kg	MPa
1	3½	7/8	1	-	.3	-	300/450	25	89	22	27	-	0.14	-	2.07/3.10
1½	3 ³ / ₈	1½	1 ³ / ₈	-	.5	-	300/450	38	98	38	35	-	0.23	-	2.07/3.10
2	4¼	2	1 ⁵ / ₈	1 ³ / ₈	.5	.3	300/450	51	108	51	41	35	0.23	0.14	2.07/3.10
3	5	3	2 ¹ / ₈	1 ⁵ / ₈	.9	.6	200/300	76	127	76	54	41	0.41	0.27	1.38/2.07
4	5	4	2	1½	1.0	.8	150/225	102	127	102	51	38	0.45	0.63	1.03/1.55
6	5 ⁵ / ₈	6	2 ⁷ / ₈	2 ³ / ₈	2.3	1.8	150/225	152	143	152	73	60	1.04	0.84	1.03/1.55
8	8¼	8	2 ⁷ / ₈	3 ³ / ₈	5.8	4.9	150/225	203	210	203	73	98	2.63	2.22	1.03/1.55
10	8¼	10 ¹ / ₈	-	3½	-	6.3	125/190	254	210	257	-	89	-	2.86	0.86/1.31



SPIGOT x GROOVED⁽²⁾

Nom. Pipe Size	A	B	X ⁽¹⁾ With GT Pipe	X ⁽¹⁾ With RTII Pipe	Nom. Wgt. GT	Nom. Wgt. RT II	Cyclic/ Steady Pressure	Nom. Pipe Size	A	B	X ⁽¹⁾ With GT Pipe	X ⁽¹⁾ With RT II Pipe	Nom. Wgt. GT	Nom. Wt. RTII	Cyclic/ Steady Pressure
In.	In.	In.	In.	In.	Lbs.	Lbs.	psig	mm	mm	mm	mm	mm	kg	kg	MPa
1	2¾	7/8	-	-	.1	-	300/450	25	70	22	-	-	0.05	-	2.07/3.10
1½	3 ³ / ₈	1½	-	-	.2	-	300/450	38	79	38	-	-	0.09	-	2.07/3.10
2	3 ⁵ / ₈	2	-	-	.3	.3	300/450	51	92	51	-	-	0.14	0.14	2.07/3.10
3	4¼	3	-	-	.9	.6	200/300	76	127	76	-	-	0.41	0.27	1.38/2.07
4	4½	4	-	-	1.0	.9	150/225	102	114	102	-	-	0.45	0.41	1.03/1.55
6	5	6	-	-	2.6	2.0	150/225	152	127	152	-	-	1.18	0.91	1.03/1.55
8	7	8	-	-	4.4	4.1	150/225	203	178	203	-	-	2.00	1.86	1.03/1.55
10	7	10 ¹ / ₈	-	-	-	5.6	125/190	254	178	257	-	-	-	2.54	0.86/1.31
12	7	12	-	-	-	6.8	100/150	305	178	305	-	-	-	3.08	0.69/1.03

REDUCERS (1"-16 parts are available in GREEN THREAD only.)



CONCENTRIC REDUCER BELLED

Nom. Pipe Size	A	X ₁ ⁽¹⁾ With GT Pipe	X ₂ ⁽¹⁾ With Gt Pipe	X ₁ ⁽¹⁾ With RT II Pipe	X ₂ ⁽¹⁾ With RT II Pipe	Nom. Wgt.	Cyclic/ Steady Pressure	Nom. Pipe Size	A	X ₁ ⁽¹⁾ With GT Pipe	X ₂ ⁽¹⁾ With GT Pipe	X ₁ ⁽¹⁾ With RT II Pipe	X ₂ ⁽¹⁾ With RT II Pipe	Nom. Wgt.	Cyclic/ Steady Pressure
In.	In.	In.	In.	In.	In.	Lbs.	psig	mm	mm	mm	mm	mm	mm	kg	MPa
2x1	5½	1⅝	1⅜	1⅜	1⅜	.6	300/450	51x25	140	41	35	35	35	0.27	2.07/3.10
2x1½	5½	1⅝	1⅜	1⅜	1⅜	.6	300/450	51x38	140	41	35	35	35	0.27	2.07/3.10
3x1½	7⅞	2⅛	1⅝	1⅝	1⅜	1.3	300/450	76x38	181	54	41	41	35	0.59	2.07/3.10
3x2	7⅞	2⅛	1⅝	1⅝	1⅜	1.3	300/450	76x51	181	54	41	41	35	0.59	2.07/3.10
4x2	7⅞	2	2⅛	1½	1⅝	1.9	150/225 ⁽²⁾	102x51	200	51	54	38	41	0.86	1.03/1.55 ⁽²⁾
4x3	7⅞	2	2⅛	1½	1⅝	1.9	150/225 ⁽²⁾	102x76	200	51	54	38	41	0.86	1.03/1.55 ⁽²⁾
6x3	11¼	2⅞	2	2⅝	1½	4.3	150/225 ⁽²⁾	152x76	286	73	51	60	38	1.95	1.03/1.55 ⁽²⁾
6x4	11¼	2⅞	2	2⅝	1½	4.3	150/225 ⁽²⁾	152x102	286	73	51	60	38	1.95	1.03/1.55 ⁽²⁾
8x4	15¼	3⅝	3⅝	4⅝	2⅞	7.3	150/225	203x102	387	86	86	111	73	3.31	1.03/1.55
8x6	15¼	3⅝	3⅝	4⅝	2⅞	7.3	150/225	203x152	387	86	86	111	73	3.31	1.03/1.55
10x6	16½	3⅝	3⅝	4⅝	4⅝	11.1	150/225	254x152	419	98	86	105	111	5.03	1.03/1.55
10x8	16½	3⅝	3⅝	4⅝	4⅝	11.1	150/225	254x203	419	98	86	105	111	5.03	1.03/1.55
12x8	17¾	4	3⅞	4¼	4⅝	16.4	150/225	305x203	451	102	98	108	105	7.44	1.03/1.55
12x10	17¾	4	3⅞	4¼	4⅝	16.4	150/225	305x254	451	102	98	108	105	7.44	1.03/1.55
14x10	19¾	3⅝	4¼	3⅝	4¼	18.9	150/225	356x254	502	92	108	92	108	8.57	1.03/1.55
14x12	19¾	3⅝	4¼	3⅝	4¼	18.9	150/225	356x305	502	92	108	92	108	8.57	1.03/1.55
16x12	22	3⅝	3⅝	3⅝	3⅝	24.4	150/225	406x305	560	92	92	92	92	11.07	1.03/1.55
16x14	22	3⅝	3⅝	3⅝	3⅝	24.4	150/225	406x356	560	92	92	92	92	11.07	1.03/1.55

NOTE: MULTI-STEP and ECCENTRIC reducers are available through 16" sizes. Information is available on request.

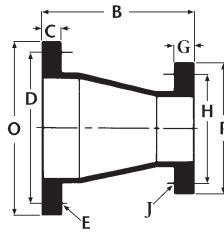
⁽¹⁾This is a nominal make-up dimension for drawing layout work only. Do not use for assembly dimensions.

⁽²⁾Also available on special order for 300 psig cyclic and 450 psig steady pressure service with belled ends.

⁽³⁾Flanges should be joined only to flat-faced flanges. See Smith Fibercast Installation Instructions for valve, torque, bolt, and gasket recommendations.

These comments also apply to the flanged concentric reducers on the following page.

REDUCERS (1"-16 parts are available in GREEN THREAD only.)

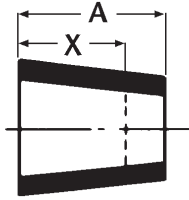


CONCENTRIC REDUCER FLANGED⁽³⁾

Nom. Pipe Size	B	C	D	E	O	G	H	J	P	Nom. Wgt.	Cyclic/ Steady Pressure
In.	In.	In.	In.	In.	In.	In.	In.	In.	In.	Lbs.	psig
2x1	5	3/4	4 3/4	3/4D - 4 holes	6	3/4	3 7/8	5/8D - 4 holes	4 1/4	2.6	200/300
2x1 1/2	5	3/4	4 3/4	3/4D - 4 holes	6	3/4	3 7/8	5/8D - 4 holes	5	2.6	200/300
3x1 1/2	6	1 1/8	6	3/4D - 4 holes	7 1/2	3/4	4 3/4	3/4D - 4 holes	5	4.4	125/190
3x2	6	1 3/8	6	3/4D - 4 holes	7 1/2	3/4	4 3/4	3/4D - 4 holes	6	4.4	125/190
4x2	7	1 3/8	7 1/2	3/4D - 8 holes	9	1 3/8	6	3/4D - 4 holes	6	7.1	100/150
4x3	7	1 3/8	7 1/2	3/4D - 8 holes	9	1 3/8	6	3/4D - 4 holes	7 1/2	7.1	100/150
6x3	9	1 1/2	9 1/2	7/8D - 8 holes	11	1 3/8	7 1/2	3/4D - 8 holes	7 1/2	11.0	100/150
6x4	9	1 1/2	9 1/2	7/8D - 8 holes	11	1 3/8	7 1/2	3/4D - 8 holes	9	11.0	100/150
8x4	11	1 3/4	11 3/4	7/8D - 8 holes	13 1/2	1 1/2	9 1/2	7/8D - 8 holes	9	17.6	150/225
8x6	11	1 3/4	11 3/4	7/8D - 8 holes	13 1/2	1 1/2	9 1/2	7/8D - 8 holes	11	17.6	150/225
10x6	12	2	14 1/4	1D - 12 holes	16	1 3/4	11 3/4	7/8D - 8 holes	11	28.2	150/225
10x8	12	2	14 1/4	1D - 12 holes	16	1 3/4	11 3/4	7/8D - 8 holes	13 1/2	28.2	150/225
12x8	14	2 1/4	17	1D - 12 holes	19	2	14 1/4	1D - 12 holes	13 1/2	43.0	150/225
12x10	14	2 1/4	17	1D - 12 holes	19	2	14 1/4	1D - 12 holes	16	43.0	150/225
14x10	16	2 1/2	18 3/4	1 1/8D - 12 holes	20 3/4	2 1/4	17	1D - 12 holes	16	55.0	150/225
14x12	16	2 1/2	18 3/4	1 1/8D - 12 holes	20 3/4	2 1/4	17	1D - 12 holes	19	55.0	150/225
16x12	18	2 1/2	21 1/4	1 1/8D - 16 holes	23 1/4	2 1/2	18 3/4	1 1/8D - 12 holes	19	89.5	150/225
16x14	18	2 1/2	21 1/4	1 1/8D - 16 holes	23 1/4	2 1/2	18 3/4	1 1/8D - 12 holes	20 3/4	89.5	150/225

mm	mm	mm	mm	mm	mm	mm	mm	mm	mm	kg	MPa
51x25	127	19	121	19D - 4 holes	152	19	98	16D - 4 holes	108	1.18	1.38/2.07
51x38	127	19	121	19D - 4 holes	152	19	98	16D - 4 holes	127	1.18	1.38/2.07
76x38	152	35	152	19D - 4 holes	191	19	121	19D - 4 holes	127	2.00	0.86/1.31
76x51	152	35	152	19D - 4 holes	191	19	121	19D - 4 holes	152	2.00	0.86/1.31
102x51	178	35	191	19D - 8 holes	229	35	152	19D - 4 holes	152	3.22	0.69/1.03
102x76	178	35	191	19D - 8 holes	229	35	152	19D - 4 holes	191	3.22	0.69/1.03
152x76	229	38	241	22D - 8 holes	279	35	191	19D - 8 holes	191	4.99	0.69/1.03
152x102	229	38	241	22D - 8 holes	279	35	191	19D - 8 holes	229	4.99	0.69/1.03
203x102	279	44	298	22D - 8 holes	343	38	241	22D - 8 holes	229	7.98	1.03/1.55
203x152	279	44	298	22D - 8 holes	343	38	241	22D - 8 holes	279	7.98	1.03/1.55
254x152	305	51	362	25D - 12 holes	406	44	298	22D - 8 holes	279	12.79	1.03/1.55
254x203	305	51	362	25D - 12 holes	406	44	298	22D - 8 holes	343	12.79	1.03/1.55
305x203	356	57	432	25D - 12 holes	483	51	362	25D - 12 holes	343	19.50	1.03/1.55
305x254	356	57	432	25D - 12 holes	483	51	362	25D - 12 holes	406	19.50	1.03/1.55
356x254	406	64	476	29D - 12 holes	527	57	432	25D - 12 holes	406	24.95	1.03/1.55
356x305	406	64	476	29D - 12 holes	527	57	432	25D - 12 holes	483	24.95	1.03/1.55
406x305	457	64	540	29D - 16 holes	591	64	476	29D - 12 holes	483	40.60	1.03/1.55
406x356	457	64	540	29D - 16 holes	591	64	476	29D - 12 holes	527	40.60	1.03/1.55

REDUCER BUSHING



REDUCER BUSHING

Nom. Pipe Size	A	X ⁽¹⁾ With GT Pipe	X ⁽¹⁾ With RTII Pipe	Nom. Wgt.	Cyclic/ Steady Pressure	Nom. Pipe Size	A	X ⁽¹⁾ With GT Pipe	X ⁽¹⁾ With RTII Pipe	Nom. Wgt.	Cyclic/ Steady Pressure
In.	In.	In.	In.	Lbs	psig	mm	mm	mm	mm	kg	MPa
*	1 $\frac{1}{8}$	-	-	.1	300/450	*	29	-	-	0.05	2.07/3.10
**	1 $\frac{3}{8}$	-	-	.1	300/450	*	35	-	-	0.05	2.07/3.10
2x1	2 $\frac{1}{4}$	1	-	.4	300/450	51x25	57	25	-	0.18	2.07/3.10
2x1 NPT	1 $\frac{3}{4}$	-	-	.4	300/450	51x25	44	-	-	0.18	2.07/3.10
2x1 $\frac{1}{4}$ NPT	1 $\frac{3}{4}$	-	-	.4	300/450	51x32	44	-	-	0.18	2.07/3.10
2x1 $\frac{1}{2}$	2	1 $\frac{3}{8}$	-	.1	300/450	51x38	51	35	-	0.05	2.07/3.10
2x1 $\frac{1}{2}$ NPT	1 $\frac{3}{4}$	-	-	.1	300/450	51x38	44	-	-	0.05	2.07/3.10
3x2	2 $\frac{1}{4}$	2	1 $\frac{1}{2}$.8	300/450	76x51	57	51	38	0.36	2.07/3.10
4x3	2 $\frac{5}{8}$	2 $\frac{3}{8}$	1 $\frac{7}{8}$	1.0	300/450	102x76	67	60	47	0.45	2.07/3.10
6x4	3 $\frac{1}{8}$	2 $\frac{3}{8}$	1 $\frac{1}{8}$	3.9	300/450	152x102	79	60	47	1.77	2.07/3.10
8x6	3 $\frac{1}{4}$	2 $\frac{3}{4}$	2 $\frac{1}{4}$	6.8	150/225	203x152	83	70	57	3.08	1.03/1.55
10x8	4	2 $\frac{5}{8}$	3 $\frac{5}{8}$	9.9	150/225	254x203	102	67	92	4.49	1.03/1.55
12x10	4 $\frac{1}{2}$	3 $\frac{7}{8}$	4 $\frac{1}{8}$	11.8	150/225	305x254	114	98	105	5.35	1.03/1.55
14x12	5 $\frac{1}{2}$	5 $\frac{1}{8}$	5 $\frac{1}{8}$	20.2	150/225	356x305	140	130	130	9.16	1.03/1.55
16x14	6	5 $\frac{3}{4}$	5 $\frac{3}{4}$	28.9	150/225	406x356	152	146	146	13.11	1.03/1.55

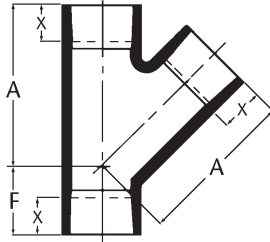
* 1x $\frac{1}{4}$ NPT, 1x $\frac{1}{2}$ NPT, 1x $\frac{3}{4}$ NPT, 1 $\frac{1}{2}$ x $\frac{1}{2}$ NPT, 1 $\frac{1}{2}$ x $\frac{3}{4}$ NPT

** 1 $\frac{1}{2}$ x1NPT, 1 $\frac{1}{2}$ x1, 1 $\frac{1}{2}$ x1 $\frac{1}{4}$ NPT

NOTE: MULTI-STEP and ECCENTRIC reducers are available through 16" sizes. Information available on request.

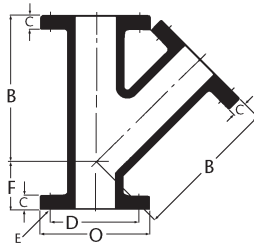
⁽¹⁾ This is a nominal make-up dimensions for drawing layout work only. Do not use for assembly dimensions.

LATERALS (1"-2" belled laterals are available in GREEN THREAD only; 3"-16" belled laterals are available in GREEN THREAD and RED THREAD II; 1"-6" flanged laterals are available in GREEN THREAD only; 8"-16" flanged laterals are available in GREEN THREAD and RED THREAD II)



45° LATERAL BELLED

Nom. Pipe Size	A	F	X ⁽¹⁾ With GT Pipe	X ⁽¹⁾ W/RTII Pipe	Nom. Wgt.	Cyclic/ Steady Pressure	Nom. Pipe Size	A	F	X ⁽¹⁾ With GT Pipe	X ⁽¹⁾ W/RTII Pipe	Nom. Wgt.	Cyclic/ Steady Pressure
In.	In.	In.	In.	In.	Lbs.	psig	mm	mm	mm	mm	mm	kg	MPa
1	3 7/8	2 1/2	1	-	.6	100/150	25	98	64	25	-	0.27	0.69/1.03
1 1/2	5 1/4	3 3/4	1 3/8	-	1.3	100/150	38	133	83	35	-	0.59	0.69/1.03
2	6 5/8	2 3/4	1 5/8	1 3/8	4.1	300/450	51	168	70	41	35	1.86	2.07/3.10
3	7 3/4	4 1/4	2 1/8	1 5/8	4.4	100/150	76	197	108	54	41	2.00	0.69/1.03
4	9	4 3/8	2	1 1/2	7.8	100/150	102	229	111	51	38	3.54	0.69/1.03
6	12 1/2	5 3/4	2 7/8	2 3/8	13.7	90/135	152	318	146	73	60	6.21	0.62/0.93
8	16 1/4	7 5/8	2 7/8	3 3/8	33.7	90/135	203	413	187	73	98	15.29	0.62/0.93
10	19 5/8	8 3/4	3 1/4	3 1/2	53.3	80/120	254	498	222	83	89	24.17	0.55/0.83
12	24 3/4	11 3/4	3 5/8	3 3/8	96.0	60/90	305	629	298	92	98	43.54	0.41/0.62
14	32 1/2	15 3/4	4 3/8	4 3/8	154.2	50/75	356	826	400	111	111	69.94	0.34/0.52
16	35 3/4	17 3/4	4 1/2	4 1/2	222.6	50/75	406	908	451	114	114	101	0.34/0.52



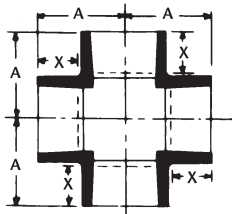
45° LATERAL FLANGED⁽²⁾

Nom Pipe Size	B	C	D	E	F	O	Nom. Wgt.	Cyclic/ Steady Press.	Nom. Pipe Size	B	C	D	E	F	O	Nom Wgt.	Cyclic/ Steady Press.
In.	In.	In.	In.	In.	In.	In.	Lbs.	psig	mm	mm	mm	mm	mm	mm	mm	kg	MPa
1	6	3/4	3 1/4	5/8D-4 holes	4 1/2	4 1/4	2.8	100/150	25	152	19	83	16D-4 holes	114	108	1.27	0.69/1.03
1 1/2	8 1/2	3/4	3 3/8	5/8D-4 holes	5 1/2	5	4.4	100/150	38	216	19	98	16D-4 holes	140	127	2.00	0.69/1.03
2	8 5/8	3/4	4 3/4	3/4D-4 holes	6 3/8	6	7.8	100/150	51	225	19	121	19D-4 holes	162	152	3.54	0.69/1.03
3	11 3/4	1 1/8	6	3/4D-4 holes	8	7 1/2	13.4	100/150	76	298	35	152	19D-4 holes	203	191	6.08	0.69/1.03
4	12 7/8	1 1/8	7 1/2	3/4D-8 holes	8 1/2	9	19.2	100/150	102	327	35	191	19D-8 holes	216	229	8.71	0.69/1.03
6	18	1 1/2	9 1/2	7/8D-8 holes	11	11	35	90/135	152	457	38	241	22D-8 holes	279	279	15.9	0.62/0.93
8	21 1/4	1 3/4	11 3/4	7/8D-8 holes	13 3/4	13 1/2	65.3	90/135	203	552	44	298	22D-8 holes	349	343	29.6	0.62/0.93
10	26 5/8	2	14 1/4	1D-12 holes	16 5/8	16	112	80/120	254	676	51	362	25D-12 holes	422	406	50.8	0.55/0.83
12	32	2 1/4	17	1D-12 holes	20	19	172	60/90	305	813	57	432	25D-12 holes	508	483	78	0.41/0.62
14	36	2 1/2	18 3/4	1 1/8D-12 holes	22	20 3/4	209	50/75	356	914	64	476	29D-12 holes	559	527	94.6	0.34/0.52
16	40	2 1/2	21 1/4	1 1/8D-16 holes	24	23 1/4	267	50/75	406	1016	64	540	29D-16 holes	610	594	121	0.34/0.52

⁽¹⁾This is a nominal make-up dimension for drawing layout work only. Do not use for assembly dimensions.

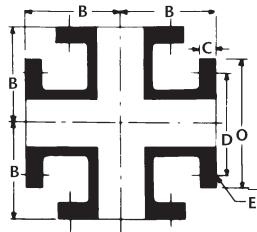
⁽²⁾Flanges should be joined only to flat-faced flanges. See Smith Fibercast Installation Instructions for valve, torque, bolt, and gasket recommendations.

CROSSES (1"-6" parts are available in GREEN THREAD only; 8"-16" parts are available in GREEN THREAD and RED THREAD II)



CROSS BELLED

Nom. Pipe Size	A	X ⁽¹⁾ With GT Pipe	X ⁽¹⁾ W/RTII Pipe	Nom. Wgt.	Cyclic/ Steady Pressure	Nom. Pipe Size	A	X ⁽¹⁾ With GT Pipe	X ⁽¹⁾ W/RTII Pipe	Nom. Wgt.	Cyclic/ Steady Pressure
In.	In.	In.	In.	Lbs.	200/300	mm	mm	mm	mm	kg	MPa
1	2¾	1	-	1.4	200/300	25	70	25	-	0.64	1.38/2.07
1½	3⅝	1⅝	-	2.0	200/300	38	86	35	-	0.91	1.38/2.07
2	3⅝	1⅝	1⅝	3.4	125/190	51	86	41	35	1.54	1.38/2.07
3	4⅝	2⅝	1⅝	8.5	100/150	76	117	54	41	3.86	0.86/1.31
4	5⅝	2	1½	10.7	100/150	102	130	51	38	4.85	0.69/1.03
6	6⅝	2⅝	2⅝	17.3	100/150	152	156	73	60	7.85	0.69/1.03
8	11⅝	2⅝	3⅝	30.8	100/150	203	295	73	98	13.97	0.69/1.03
10	13⅝	3¼	3½	42.7	100/150	254	333	83	89	19.37	0.69/1.03
12	14	3⅝	3⅝	73.2	100/150	305	356	92	98	33.20	0.69/1.03
14	16	4⅝	4⅝	104	100/150	356	406	111	111	47.27	0.69/1.03
16	17¼	4½	4½	143	100/150	406	438	114	114	64.86	0.69/1.03



CROSS FLANGED⁽²⁾

Nom Pipe Size	B	C	D	E	O	Nom Wgt.	Cyclic/ Steady Pressure	Nom Pipe Size	B	C	D	E	O	Nom Wgt.	Cyclic/ Steady Pressure
In.	In.	In.	In.	In.	In.	Lbs.	psig	mm	mm	mm	mm	mm	mm	kg	MPa
1	3½	¾	3⅝	⅝D-4 holes	4¼	3.8	200/300	25	89	19	79	16D-4holes	108	1.7	1.38/2.07
1½	4	¾	3⅝	⅝D-4 holes	5	5.4	200/300	38	102	19	79	16D-4holes	127	2.5	1.38/2.07
2	4½	¾	4¾	¾D-4 holes	6	8.6	200/300	51	114	19	121	19D-4holes	152	3.9	1.38/2.07
3	5½	1⅝	6	¾D-4 holes	7½	15.1	125/190	76	140	35	152	19D-4holes	191	6.8	0.86/1.31
4	6½	1⅝	7½	¾D-8 holes	9	22.8	100/150	102	165	35	191	19D-8holes	229	10.3	0.69/1.03
6	8	1½	9½	⅝D-8 holes	11	34.9	100/150	152	203	38	241	22D-8holes	279	15.8	0.69/1.03
8	9	1¾	11¾	⅝D-8 holes	13½	61.2	100/150	203	229	44	298	22D-8holes	343	27.8	0.69/1.03
10	11	2	14¼	1D-12 holes	16	83.5	100/150	254	279	51	362	25D-12 holes	406	37.9	0.69/1.03
12	12	2¼	17	1D-12 holes	19	145	100/150	305	305	57	432	25D-12holes	483	65.8	0.69/1.03
14	14	2½	18¾	1⅝D-12 holes	20¾	224	100/150	356	356	64	476	29D-12holes	527	102	0.69/1.03
16	15	2½	21¼	1⅝D-16 holes	23¼	303	100/150	406	381	64	540	29D-16holes	594	137	0.69/1.03

⁽¹⁾This is a nominal make-up dimension for drawing layout work only. Do not use for assembly dimensions.

⁽²⁾Flanges should be joined only to flat-faced flanges. See Smith Fibercast Installation Instructions for valve, torque, bolt, and gasket recommendations.

SADDLES (Parts are available in GREEN THREAD only.)



BELLED SIDE OUTLET

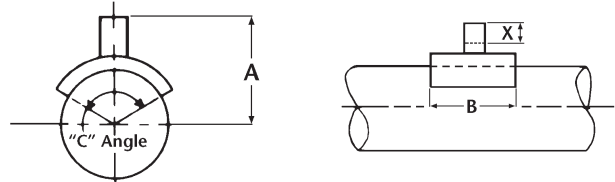
Nom Size	A	B	C Angle	X ⁽¹⁾ W/GT Pipe	X ⁽¹⁾ W/RTII Pipe	Nom Wgt.	Cyclic/ Steady Pressure	Nom. Size	A	B	X ⁽¹⁾ W/GT Pipe	X ⁽¹⁾ W/RTII Pipe	Nom Wgt.	Cyclic/ Steady Pressure
In.	In.	In.	Degree	In.	In.	Lbs.	psig	mm	mm	mm	mm	mm	kg	MPa
2x1	2 $\frac{5}{8}$	4	180	1	-	.6	300/450	51x25	73	102	25	-	0.27	2.07/3.10
2x1 $\frac{1}{2}$	2 $\frac{7}{8}$	4	180	1 $\frac{3}{8}$	-	.5	300/450	51x38	73	102	35	-	0.23	2.07/3.10
3x1	3 $\frac{1}{2}$	6	180	1	-	1.5	200/300	76x25	89	152	25	-	0.68	1.38/2.07
3x1 $\frac{1}{2}$	3 $\frac{1}{2}$	6	180	1 $\frac{3}{8}$	-	.9	200/300	76x38	89	152	35	-	0.41	1.38/2.07
3x2	4	6	180	1 $\frac{5}{8}$	1 $\frac{5}{8}$	1.4	200/300	76x51	102	152	41	35	0.64	1.38/2.07
4x1	4	6	180	1	-	1.4	150/225	102x25	102	152	25	-	0.64	1.03/1.55
4x1 $\frac{1}{2}$	4	6	180	1 $\frac{3}{8}$	-	1.5	150/225	102x38	102	152	35	-	0.68	1.03/1.55
4x2	4 $\frac{1}{2}$	6	180	1 $\frac{5}{8}$	1 $\frac{5}{8}$	1.5	150/225	102x51	114	152	41	35	0.68	1.03/1.55
4x3	5 $\frac{1}{4}$	6	180	2 $\frac{1}{8}$	1 $\frac{5}{8}$	1.6	150/225	102x76	133	152	54	41	0.73	1.03/1.55
6x1	5	6	120	1	-	1.4	150/225	152x25	127	152	25	-	0.64	1.03/1.55
6x1 $\frac{1}{2}$	5	6	120	1 $\frac{3}{8}$	-	1.3	150/225	152x38	127	152	35	-	0.59	1.03/1.55
6x2	5 $\frac{1}{2}$	6	120	1 $\frac{5}{8}$	1 $\frac{5}{8}$	1.5	150/225	152x51	140	152	41	35	0.68	1.03/1.55
6x3	6 $\frac{1}{4}$	6	120	2 $\frac{1}{8}$	1 $\frac{5}{8}$	1.6	150/225	152x76	159	152	54	41	0.73	1.03/1.55
6x4	6 $\frac{3}{8}$	8	140	2	1 $\frac{1}{2}$	2.4	150/225	152x102	162	203	51	38	1.09	1.03/1.55
8x1 ⁽²⁾	7 $\frac{5}{8}$	9	120	1	-	3.1	150/225	203x25	181	229	25	-	1.41	1.03/1.55
8x1 $\frac{1}{2}$ ⁽²⁾	7 $\frac{5}{8}$	9	120	1 $\frac{3}{8}$	-	2.8	150/225	203x38	181	229	35	-	1.27	1.03/1.55
8x2	7 $\frac{5}{8}$	9	120	1 $\frac{5}{8}$	1 $\frac{5}{8}$	2.7	150/225	203x51	181	229	41	35	1.22	1.03/1.55
8x3	8	14	180	2 $\frac{1}{8}$	1 $\frac{5}{8}$	6	150/225	203x76	203	356	54	41	2.72	1.03/1.55
8x4	7 $\frac{3}{8}$	14	180	2	1 $\frac{1}{2}$	6.1	150/225	203x102	187	356	51	38	2.77	1.03/1.55
8x6	9 $\frac{5}{8}$	14	180	2 $\frac{7}{8}$	2 $\frac{3}{8}$	7.7	125/190	203x152	244	356	73	60	3.49	0.86/1.31
10x1 ⁽²⁾	8 $\frac{5}{8}$	9	95	1	-	3.1	150/225	254x25	206	229	25	-	1.41	1.03/1.55
10x1 $\frac{1}{2}$ ⁽²⁾	8 $\frac{5}{8}$	9	95	1 $\frac{3}{8}$	-	2.8	150/225	254x38	206	229	35	-	1.27	1.03/1.55
10x2	8 $\frac{5}{8}$	9	95	1 $\frac{5}{8}$	1 $\frac{3}{8}$	2.7	150/225	254x51	206	229	41	35	1.22	1.03/1.55
10x3	9	14	150	2 $\frac{1}{8}$	1 $\frac{5}{8}$	6.1	150/225	254x76	229	356	54	41	2.77	1.03/1.55
10x4	8 $\frac{3}{8}$		180	2	1 $\frac{1}{2}$	8.4	150/225	254x102	213	425	51	38	3.81	1.03/1.55
10x6	10 $\frac{5}{8}$		180	2 $\frac{7}{8}$	2 $\frac{3}{8}$	10	125/190	254x152	270	425	73	60	4.54	0.86/1.31
10x8	12 $\frac{1}{8}$		180	3 $\frac{3}{8}$	4 $\frac{3}{8}$	11.9	100/150	254x203	308	425	86	111	5.40	0.69/1.03
12x1 ⁽²⁾	9 $\frac{5}{8}$	10	90	1	-	3.6	150/225	305x25	232	254	25	-	1.63	1.03/1.55
12x1 $\frac{1}{2}$ ⁽²⁾	9 $\frac{5}{8}$	10	90	1 $\frac{3}{8}$	-	3.3	150/225	305x38	232	254	35	-	1.50	1.03/1.55
12x2	9 $\frac{5}{8}$	10	90	1 $\frac{5}{8}$	1 $\frac{3}{8}$	3.2	150/225	305x51	232	254	41	35	1.45	1.03/1.55
12x3	10	14	125	2 $\frac{1}{8}$	1 $\frac{5}{8}$	6.1	150/225	305x76	254	356	54	41	2.77	1.03/1.55
12x4	9 $\frac{3}{8}$	17	155	2	1 $\frac{1}{2}$	8.6	150/225	305x102	238	432	51	38	3.90	1.03/1.55
12x6	11 $\frac{5}{8}$	21	180	2 $\frac{7}{8}$	2 $\frac{3}{8}$	13.5	150/225	305x152	296	533	73	60	6.12	1.03/1.55
12x8	13 $\frac{1}{8}$	21	180	3 $\frac{3}{8}$	4 $\frac{3}{8}$	15.3	125/190	305x203	333	533	86	111	6.94	0.86/1.31
12x10	13	21	180	3 $\frac{3}{8}$	4 $\frac{3}{8}$	22	100/150	305x254	330	533	98	105	9.98	0.69/1.03

⁽¹⁾This is a nominal make-up dimension for drawing layout work only. Do not use for assembly directions.

⁽²⁾Saddle is manufactured by bonding a reducer bushing into a saddle with a 2" outlet.

SADDLES, Continued (Parts are available in GREEN THREAD only.)

Nom Size	A	B	C Angle	X ⁽¹⁾ W/GT Pipe	X ⁽¹⁾ W/RTII Pipe	Nom Wgt.	Cyclic/ Steady Pressure	Nom Size	A	B	X ⁽¹⁾ W/GT Pipe	X ⁽¹⁾ W/RTII Pipe	Nom Wgt.	Cyclic/ Steady Pressure
In.	In.	In.	Degree	In.	In.	Lbs.	psig	mm	mm	mm	mm	mm	kg	MPa
14x1 ⁽²⁾	10	12	95	1	-	4.7	150/225	356x25	254	305	25	-	2.13	1.03/1.55
14x1½ ⁽²⁾	10	12	95	1¾	-	4.4	150/225	356x38	254	305	35	-	2.00	1.03/1.55
14x2	10	12	95	1¾	1¾	4.3	150/225	356x51	254	305	41	35	1.95	1.03/1.55
14x3	10¾	15	120	2¼	1¾	6.9	150/225	356x76	276	381	54	41	3.13	1.03/1.55
14x4	10¼	17	135	2	1½	8.4	150/225	356x102	260	432	51	38	3.81	1.03/1.55
14x6	12¾	21	165	2¾	2¾	12.2	150/225	356x152	321	533	73	60	5.53	1.03/1.55
14x8	14	21	165	3¾	4¾	15.9	150/225	356x203	356	533	86	111	7.21	1.03/1.55
14x10	14	26	180	3¾	4¾	28.4	100/150	356x254	356	660	98	105	12.88	0.69/1.03
14x12	14¾	26	180	4	4¼	30.1	100/150	356x305	365	660	102	108	13.65	0.69/1.03
16x1 ⁽²⁾	11	13	90	1	-	5.4	150/225	406x25	279	330	25	-	2.45	1.03/1.55
16x1½ ⁽²⁾	11	13	90	1¾	-	5.1	150/225	406x38	279	330	35	-	2.31	1.03/1.55
16x2	11	13	90	1¾	1¾	5	150/225	406x51	279	330	41	35	2.27	1.03/1.55
16x3	11¾	15	105	2¼	1¾	6.9	150/225	406x76	302	381	54	41	3.13	1.03/1.55
16x4	11¼	17	120	2	1½	8.6	150/225	406x102	286	432	51	38	3.90	1.03/1.55
16x6	13¾	21	145	2¾	2¾	14.2	150/225	406x152	346	533	73	60	6.44	1.03/1.55
16x8	15	26	180	3¾	4¾	21.9	150/225	406x203	381	660	86	111	9.93	1.03/1.55
16x10	15	26	180	3¾	4¾	31	150/225	406x254	381	660	98	105	14.06	1.03/1.55
16x12	15¾	26	180	4	4¼	32.6	100/150	406x305	391	660	102	108	14.77	0.69/1.03
16x14	14¾	26	180	3¾	3¾	30.6	100/150	406x356	359	660	92	92	13.88	0.69/1.03



THREADED SIDE OUTLET NPT INTERNAL THREADS

Nom. Size	A	B	C Angle	Nom. Wgt.	Cyclic/ Steady Pressure	Nom. Size	A	B	Nom. Wgt.	Cyclic/ Steady Pressure
In.	In.	In.	Degree	Lbs.	psig	mm	mm	mm	kg	MPa
2x1	2¾	4	180	.6	300/450	51x25	73	102	0.27	2.07/3.10
2x1¼	2¾	4	180	.6	300/450	51x32	73	102	0.27	2.07/3.10
2x1½	2¾	4	180	.5	300/450	51x38	73	102	0.23	2.07/3.10
3x1	3½	6	180	1.1	200/300	76x25	89	152	0.50	1.38/2.07
3x1¼	3½	6	180	1.0	200/300	76x32	89	152	0.45	1.38/2.07
3x1½	3½	6	180	1.0	200/300	76x38	89	152	0.45	1.38/2.07
4x1	4	6	180	1.6	150/225	102x25	102	152	0.73	1.03/1.55
4x1¼	4	6	180	1.5	150/225	102x32	102	152	0.68	1.03/1.55
4x1½	4	6	180	1.4	150/225	102x38	102	152	0.64	1.03/1.55
6x1	5	6	120	1.5	150/225	152x25	127	152	0.68	1.03/1.55
6x1¼	5	6	120	1.4	150/225	152x32	127	152	0.64	1.03/1.55
6x1½	5	6	120	1.5	150/225	152x38	127	152	0.68	1.03/1.55
8x1	7¾	9	120	3.1	150/225	203x25	181	229	1.41	1.03/1.55
10x1	8¾	9	95	3.1	150/225	254x25	206	229	1.41	1.03/1.55
12x1	9¾	10	90	3.6	150/225	305x25	232	254	1.63	1.03/1.55
14x1	10	12	95	4.7	150/225	356x25	254	305	2.13	1.03/1.55
16x1	11	13	90	5.4	150/225	406x25	279	330	2.45	1.03/1.55