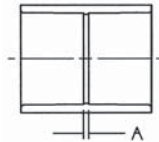


COUPLINGS

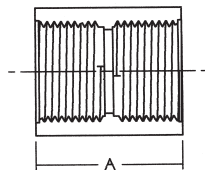
4601



Coupling (Slip x Slip)

UNIV. FIG. NO.	NOM. SIZE	APPROX. NET WT./LBS.	DIM. A INCHES
429-005	1/2	.032	3/32
429-007	3/4	.049	3/32
429-010	1	.080	3/32
429-012	1 1/4	.121	3/32
429-015	1 1/2	.149	3/32
429-020	2	.200	3/32
429-025	2 1/2	.648	3/16
429-030	3	.570	3/16
429-040	4	.919	3/16
429-050	5	1.933	1/4
429-060	6	2.100	1/4
429-080	8	5.100	1/4
429-100	10	8.533	1/2
429-120	12	14.490	1/2

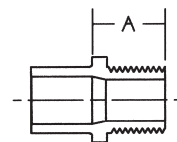
4601-3-3



Coupling (FIPT x FIPT)

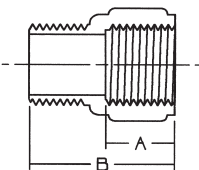
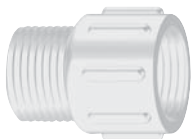
UNIV. FIG. NO.	NOM. SIZE	APPROX. NET WT./LBS.	DIM. A INCHES
430-005	1/2	.037	1 1/2
430-007	3/4	.047	1 17/32
430-010	1	.160	2 1/16
430-073	1/2 x 3/8	.054	1 11/16

ADAPTERS



Male Fitting Adapter (Spg x MIPT)

UNIV. FIG. NO.	NOM. SIZE	APPROX. NET WT./LBS.	DIM. A INCHES
433-005	1/2	.025	29/32
433-007	3/4	.036	13/16



Riser Extender (MIPT x FIPT)

UNIV. FIG. NO.	NOM. SIZE	APPROX. NET WT./LBS.	DIM. A INCHES	DIM. B INCHES
434-005	1/2	.045	11/16	2 1/16
434-007	3/4	.110	13/16	1 19/32
434-010	1	.175	7/8	1 15/16

◆ Consult technical services for dimensions

Do not use or test the products in this catalog with compressed air or other gasses.