

Fig. 304 - Weld Beam Attachment

Fig. 305 - Weld Beam Attachment with Pin

Size Range — 3/8" thru 3 1/2" rod

Material — Carbon Steel

Function — Designed for attaching hanger rod to bottom of steel structures. Can be used in an upright (Fig. 304) or inverted position (Fig. 305). When using Fig. 305, attach hanger rod to bolt or pin with a Fig. 330 Weldless Eye Nut or Fig. 101 and Fig. 102 series Eyerods.

Approvals — Conforms to Federal Specification WW-H-171E, Type 22 and Manufacturers Standardization Society SP-69, Type 22.

Finish — Plain

Note — Available in Electro-Galvanized and HDG finish or Stainless Steel materials.

Order By — Figure number, rod size and finish.

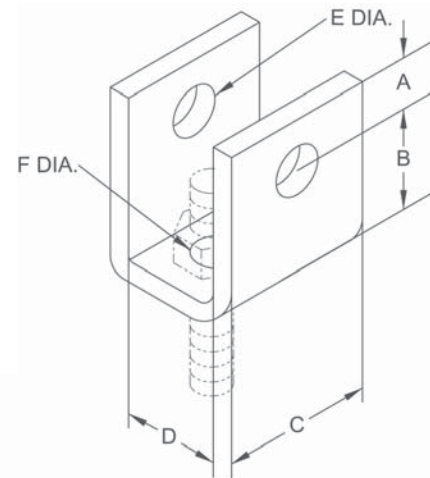


FIG. 304

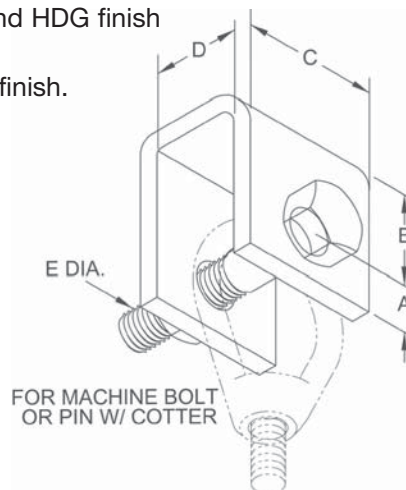


FIG. 305

Dimensions • Weights

Rod Size	A	B	C	D	E	F	Bolt Size	Max. Rec. Load Lbs.		304 Approx. Wt./100	305 Approx. Wt./100
								650°F	750°F		
3/8	7/8	2	2	1 1/4	9/16	7/16	1/2 x 2 1/2	610	510	86	107
1/2	7/8	2	2	1 1/4	11/16	9/16	5/8 x 2 1/2	1130	940	83	118
5/8	1	2	2	1 1/4	13/16	11/15	3/4 x 2 3/4	1810	1510	84	140
3/4	1 1/8	2	2 1/2	1 1/2	15/16	13/16	7/8 x 3	2710	2260	174	261
7/8	1 1/4	3	2 1/2	2	1 1/8	15/16	1 x 4	3770	3150	232	374
1	1 1/2	3	3	2	1 1/4	1 1/8	1 1/8 x 4 1/2	4960	4150	394	595
1 1/4	2	3	4	2 1/2	1 5/8	1 3/8	1 1/2 x 5 3/4	8000	6660	738	1026
1 1/2	2 1/2	4	5	3	1 7/8	1 5/8	1 3/4 x 6 1/2	11630	9700	1449	1892
1 3/4	2 3/4	5	5	3 3/4	2 1/8	1 7/8	2 x 7 3/4	15700	14000	1747	2437
2	3 1/4	5	6	3 3/4	2 3/8	2 1/8	2 1/4 x 7 3/4	20700	18460	2201	3074
2 1/4	3 1/2	6	6	4 1/2	2 5/8	2	2 1/2 x 7 3/4	27200	24260	2523	3601
2 1/2	3 3/4	6	6	4 1/2	2 7/8	2 3/8	2 3/4 x 8	33500	29880	2552	3898
*2 3/4	4	5 3/4	6	3 3/4	3 1/8	—	3 x 7 5/8	41580	37066	2675	4202
*3	4	6 1/4	7	3 3/4	3 3/8	—	3 1/4 x 7 5/8	50580	45085	3250	5043
*3 1/4	4 1/2	7	7	4 1/4	3 5/8	—	3 1/2 x 8 1/2	60480	53906	4500	6817
*3 1/2	4 1/2	7 1/2	8	4 1/4	3 7/8	—	3 3/4 x 8 1/2	71280	63493	5320	7980

Note: Sizes 3/8" thru 1" furnished with machine bolt; sizes 1 1/4" thru 3 1/2" furnished with pin and cotter.

* Welded Plate