

COUPLINGS

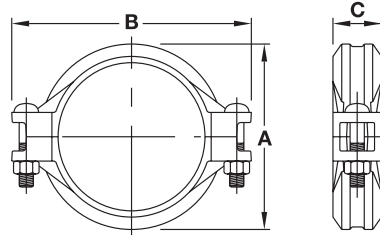
Figure 472 Stainless Steel Rigid Coupling – Patented

The Figure 472 Rigid Coupling is made of cast 316L stainless steel, and is capable of pressure up to 600 psi.

The Figure 472 Patented Coupling universal tongue and groove design allows the housing to grip along the full 360° of circumference of the pipe. Sizes 1¼" (DN 32) to 4" (DN 100) have gripping teeth to prevent rotation during installation.



Tech Data: G560



STAINLESS
STEEL
SYSTEM

Nominal Size Inches mm	Pipe O.D. Inches mm	Max. Pressures			Max. End Load lbs kN	Max. End Gap Inches mm	Nominal Dimension			Coupling Bolts		Approx. Weight lbs kg
		Sch. 5 psi bar	Sch. 10 psi bar	Sch. 40 psi bar			A Inches mm	B Inches mm	C Inches mm	Qty.	Size Inches mm	
1¼ 32	1.660 42.4	200 14	300 21	600 41	649.7 2.89	0.06 1.5	2.76 70	4.37 111	1.81 46	2	¾ x 2¼ M10 x 57	1.1 0.5
1½ 40	1.900 48.3	200 14	300 21	600 41	852.0 3.79	0.08 2.0	2.99 76	4.61 117	1.81 46	2	¾ x 2¼ M10 x 57	1.1 0.5
2 50	2.375 60.3	200 14	300 21	600 41	1,328.6 5.91	0.13 3.3	3.43 87	5.12 130	1.89 48	2	¾ x 2¼ M10 x 57	1.5 0.7
2½ 65	2.875 73.0	200 14	300 21	600 41	1,949.0 8.67	0.13 3.3	3.90 99	5.63 143	1.89 48	2	¾ x 2¼ M10 x 57	2.4 1.1
3 80	3.500 88.9	200 14	300 21	600 41	2,886.4 12.84	0.13 3.3	4.65 118	6.26 159	1.89 48	2	½ x 3 M12 x 76	2.6 1.2
4 100	4.500 114.3	200 14	300 21	600 41	4,772.5 21.23	0.19 4.8	5.83 148	7.52 191	1.97 50	2	½ x 3 M12 x 76	3.5 1.6
5 125	5.563 141.3	200 14	300 21	600 41	7,292.5 32.44	0.19 4.8	7.09 180	9.72 247	2.05 52	2	¾ x 3¼ M16 x 83	7.5 3.4
6 150	6.625 168.3	200 14	300 21	600 41	10,340.8 46.00	0.19 4.8	8.11 206	10.55 268	2.13 54	2	¾ x 3¼ M16 x 83	7.5 3.4
8 200	8.625 219.1	200 14	300 21	600 41	17,527.7 77.97	0.19 4.8	10.55 268	13.54 344	2.64 67	2	¾ x 4¾ M20 x 121	18.1 8.2
10 250	10.750 273.0	200 14	300 21	600 41	27,227.8 121.12	0.13 3.3	12.83 326	16.42 417	2.64 67	2	1 x 6½ M24 x 165	24.7 11.2
12 300	12.750 323.9	– –	300 21	600 41	43,696.6 194.38	0.13 3.3	15.39 391	18.86 479	2.64 67	2	1 x 6½ M24 x 165	42.1 19.1

The Fig. 472 Stainless Steel heavy Duty Rigid Coupling does not provide compensation for pipe system expansion and/or contraction associated with pipe system changes.

Maximum pressure and end load are total from all loads based on standard weight steel pipe. Pressure ratings and end loads may differ on pipe materials and/or wall thickness. Contact Tyco Fire and Building Products for details.

Maximum end gap and deflection is for cut grooved standard weight pipe. Values for roll grooved will be ½ that of cut grooved.

Please refer to General Notes on page 17.