

## Fig. 312 - Adjustable Pipe Support

**Size Range** — Size 2" thru 12" pipe

**Material** — Carbon Steel

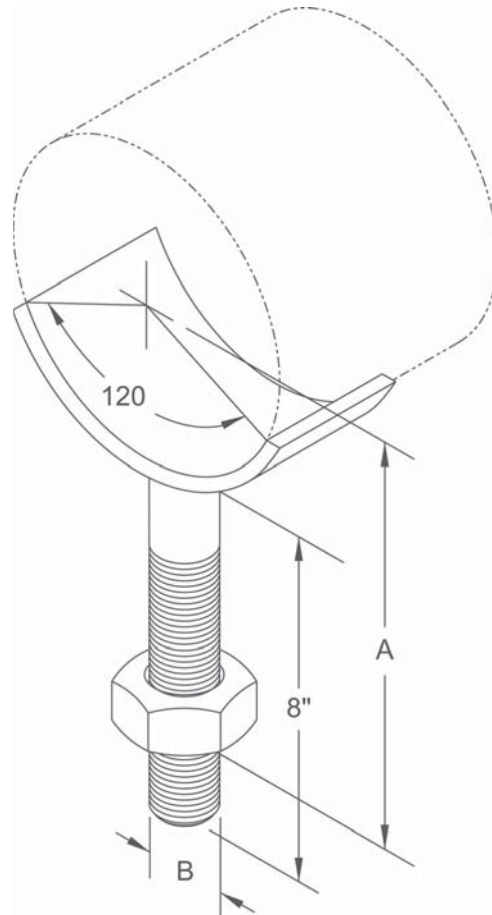
**Function** — Designed to support horizontal pipe from floor stanchion where vertical adjustment is required.

**Maximum Temperature** — 650°F

**Finish** — Plain

**Note** — Available in Electro-Galvanized and HDG finish or Stainless Steel materials.

**Order By** — Figure number, pipe size and finish



### Dimensions • Weights

Pipe Size	Max. O.D. Pipe	A		B	Use with Fig. 316 Stand Pipe Size	Approx. Wt./100
		Min.	Max.			
2	2 <sup>3</sup> / <sub>8</sub>	2 <sup>3</sup> / <sub>4</sub>	6	7/8	1	210
2½	2 <sup>7</sup> / <sub>8</sub>	3¼	6½	7/8	1	219
3	4	3½	6¾	7/8	1	240
3½	4	3½	6¾	7/8	1	240
4	4 <sup>7</sup> / <sub>8</sub>	4¼	7½	1	1	340
5	5 <sup>5</sup> / <sub>8</sub>	4½	7¾	1	1	360
6	7	5 <sup>5</sup> / <sub>8</sub>	8 <sup>3</sup> / <sub>8</sub>	1¼	1¼	580
8	9 <sup>1</sup> / <sub>8</sub>	6¾	9½	1¼	1¼	640
10	11 <sup>1</sup> / <sub>8</sub>	8	10	1¼	1¼	1060
12	13½	9¼	11¼	1¼	1¼	1060