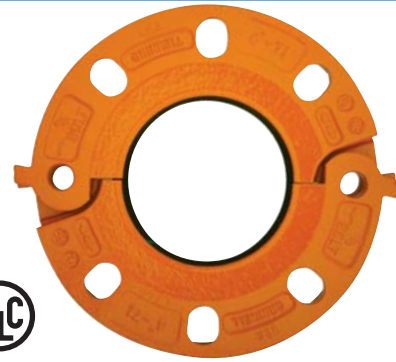


FLANGES

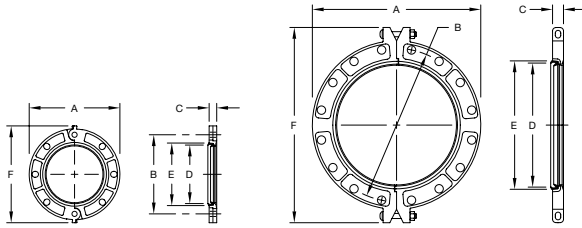
Figure 71 Flange Adapter (ANSI Class 125/150)

The Figure 71 Flange Adapter is capable of pressures up to 300 psi (20.7 bar) depending on pipe size and wall thickness. It provides a direct transition from flanged components to a grooved piping system. I.P.S. size flange bolt patterns conform to ANSI Class 125 and 150.

The gasket seal is designed with optimum amount of rubber to provide a dependable seal and also avoid the overfilling of the gasket pocket which may cause assembly difficulties.



**GROOVED
COUPLINGS
& FITTINGS**



Tech Data: G150

Sizes 2" (DN 50) – 12" (DN 300) Sizes 14" (DN 350) – 24" (DN 600)

For Fire Protection Pressure Rating and Listing / Approval information contact Tyco Fire & Building Products.

Nominal Size Inches mm	Pipe O.D. Inches mm	Max. † Pressures psi bar	Max. End † Load lbs kN	Nominal Dimensions						Bolts**		Approx. Weight lbs kg
				A Inches mm	B Inches mm	C Inches mm	D* Inches mm	E* Inches mm	F Inches mm	Qty.	Size Inches mm	
2	2.375	300	1,329.0	6.38	4.75	0.75	2.38	3.41	7.25	4	5/8 x 3	3.0
50	60.3	20.7	5.91	162.1	120.7	19.1	60.5	86.6	184.2			1.4
2½	2.875	300	1,947.5	7.00	5.50	0.88	2.88	3.91	7.88	4	5/8 x 3	5.0
65	73.0	20.7	8.66	178.0	140.0	22.0	73.0	99.0	200.0			2.3
3	3.500	300	2,886.3	7.50	6.00	0.94	3.50	4.53	9.88	4	5/8 x 3	5.6
80	88.9	20.7	12.84	190.5	152.4	23.9	88.9	115.1	251.0			2.5
4	4.500	300	4,771.3	9.00	7.50	0.94	4.50	5.53	9.90	8	5/8 x 3	7.0
100	114.3	20.7	21.22	228.6	190.5	23.9	114.3	140.5	251.5			3.2
5	5.563	300	7,291.7	10.00	8.50	1.00	5.56	6.72	11.38	8	¾ x 3½	9.2
125	141.3	20.7	32.44	254.0	215.9	25.4	141.2	170.7	289.1			4.2
6	6.625	300	10,341.5	11.00	9.50	1.00	6.62	7.78	11.88	8	¾ x 3½	10.0
150	168.3	20.7	46.02	279.4	241.3	25.4	168.1	197.6	301.8			4.5
8	8.625	300	17,527.9	13.50	11.75	1.13	8.62	9.94	14.36	8	¾ x 3½	16.6
200	219.1	20.7	77.99	342.9	298.5	28.7	218.9	252.5	365.3			7.5
10	10.750	300	27,228.8	16.00	14.25	1.19	10.75	12.31	16.88	12	7/8 x 4	21.8
250	273.0	20.7	121.08	406.4	362.0	30.2	273.1	312.7	428.8			9.9
12	12.750	300	38,302.9	19.00	17.00	1.25	12.75	14.31	20.00	12	7/8 x 4	24.2
300	323.9	20.7	170.44	482.6	431.8	31.8	323.9	363.9	508.0			11.0
14	14.000	300	46,180.0	21.00	18.76	1.44	14.00	15.03	24.00	12	1½ x N	25.0
DN350	(355.6)	20.7	205.41	(533.4)	(476.5)	(36.5)	(355.6)	(381.8)	(609.6)			(11.3)
16	16.000	300	60,315.0	23.50	21.26	1.50	16.00	17.00	26.50	16	1½ x N	31.0
DN400	(406.4)	20.7	268.28	(596.9)	(540.0)	(38.10)	(406.4)	(431.7)	(673.1)			(14.0)
18	18.000	300	76,455.0	25.00	22.76	1.63	18.00	19.01	29.00	16	1¼ x N	35.0
DN450	(457.2)	20.7	340.07	(635.0)	(578.1)	(41.3)	(457.2)	(482.8)	(736.6)			(15.8)
20	20.000	300	94,245.0	27.50	25.00	1.75	20.00	21.03	31.50	20	1¼ x N	45.0
DN500	(508.0)	20.7	419.20	(698.5)	(635.0)	(44.5)	(508.0)	(534.2)	(800.1)			(20.4)
24	24.000	300	135,720.0	32.00	29.50	1.93	24.00	25.05	36.00	20	1½ x N	59.0
DN600	(609.6)	2.7	603.68	(812.8)	(749.3)	(49.0)	(609.6)	(636.3)	(914.4)			(26.8)

† Maximum pressure and end load are total from all loads based on standard weight steel pipe. Pressure ratings and end loads may differ on other pipe materials and/or wall thickness. Contact Tyco Fire & Building Products for details.

* Dimensions D and E represent minimum and maximum sealing surfaces.

** Bolts are not supplied. Bolt lengths shown are standard; it is the responsibility of the purchaser to verify correct length for the intended application.

Note: Metal flange washer adapters are required when the Figure 71 Flange Adapter is used against surfaces such as:

- Rubber surfaces
- Adapting to AWWA cast flanges
- Rubber faced wafer valves
- Serrated flange surfaces

Metal Flange Washer Adapter available in stainless steel ASTM.ALLL type 304-2B. Contact Tyco Fire & Building Products for prices and availability.

Figure 71 Flange Adapters are not recommended for applications which incorporate tie rods for anchoring or on a standard fitting within 90° of each other.

Contact Tyco Fire & Building Products for recommendations prior to using with plastic pipe.

Please refer to General Notes on page 17.