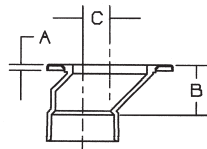


ABS & PVC-DWV Fittings

5800 Series - ABS/4800 Series PVC

FLANGES

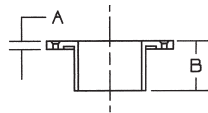
5848-A 4848-A



Offset Adjustable Closet Flange w/Plastic Coated Steel Flange (Hub)

NOM. SIZE	ABS APPROX. NET WT./LBS.	PVC APPROX. NET WT./LBS.	DIM. A INCHES	DIM. B INCHES	DIM. C INCHES
4 x 3	.903	1.137	5/16	2 ³ / ₄	1 ¹ / ₂

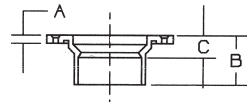
5851 4851



Closet Flange (Hub)

NOM. SIZE	ABS APPROX. NET WT./LBS.	PVC APPROX. NET WT./LBS.	DIM. A INCHES	DIM. B INCHES
4	.466	.672	7/16	2

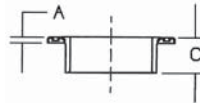
5851 4851



Reducing Closet Flange (Hub)

NOM. SIZE	ABS APPROX. NET WT./LBS.	PVC APPROX. NET WT./LBS.	DIM. A INCHES	DIM. B INCHES	DIM. C INCHES
4 x 3	.570	.769	7/16	2 ³ / ₄	1 ¹ / ₄

5851-A 4851-A

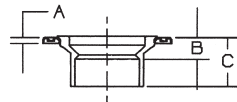


Adjustable Closet Flange

w/Plastic Coated Steel Flange (Hub)

NOM. SIZE	ABS APPROX. NET WT./LBS.	PVC APPROX. NET WT./LBS.	DIM. A INCHES	DIM. C INCHES
4	.665	.777	5/16	2

5851-A 4851-A

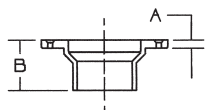


Reducing Adjustable Closet Flange

w/Plastic Coated Steel Flange (Hub)

NOM. SIZE	ABS APPROX. NET WT./LBS.	PVC APPROX. NET WT./LBS.	DIM. A INCHES	DIM. B INCHES	DIM. C INCHES
4 x 3	.770	.898	5/16	1 ¹ / ₄	2 ³ / ₄

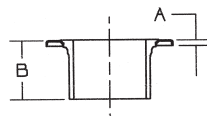
5851-2 4851-2



Closet Flange (Spig)

NOM. SIZE	ABS APPROX. NET WT./LBS.	PVC APPROX. NET WT./LBS.	DIM. A INCHES	DIM. B INCHES
4 x 3	.540	.719	7/16	2 ²⁵ / ₃₂

5851-2-A 4851-2-A



Adjustable Closet Flange

w/Plastic Coated Steel Flange (Spig)

NOM. SIZE	ABS APPROX. NET WT./LBS.	PVC APPROX. NET WT./LBS.	DIM. A INCHES	DIM. B INCHES
4	.850	1.047	5/16	3 ¹ / ₄
4 x 3	.748	.876	5/16	2 ³ / ₄

Do not use or test the products in this catalog with compressed air or other gasses.